



MLS 6568194 Land

\$27,500

2.5 Acres
Subdivided

TBD D 423rd St
Perham MN 56573

Status: Active

Description:

If you're seeking an excellent level lot to build your new home, this may be the one! This 2.5± acre lot (labeled as Tract D) is conveniently located just a few minutes from Perham and Hwy 10/MN-78. Although it's close to the Highway, it's a very peaceful and quiet location! Nature enthusiasts will love the deer and turkeys often found running around the area. Along with the Otter Tail River being super close by, there are also numerous area lakes for fishing, tubing, and kayaking. If you're looking for a little more room to roam, adjoining lots are available. Rural living within minutes from town, it doesn't get much better than that!

Additional Details:

Lot Acres	2.5
Lot Dimensions	2.5 acres
School District	549
Taxes	\$892
Taxes with Assessments	\$892
Tax Year	2023

Additional Features:

Driving Directions:

From Perham, head south on MN-78. First left onto 420th St/Minnesota St appx 1 mile. Left onto 450th Ave for .2 miles. right onto 423rd St to property.



Listed By:
Whitetail Properties Real Esta

Affinity Real Estate Inc. participates in the Regional Multiple Listing Service of Minnesota, Inc Broker Reciprocity (sm) program, allowing us to display other broker's listings on our website. All properties are subject to prior sale, change or withdrawal.



Call Affinity Real Estate

218-237-3333

info@affinityrealestate.com



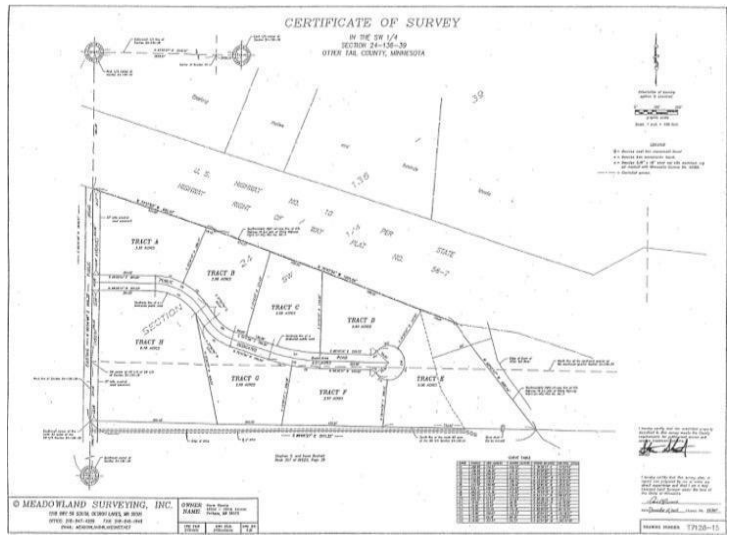
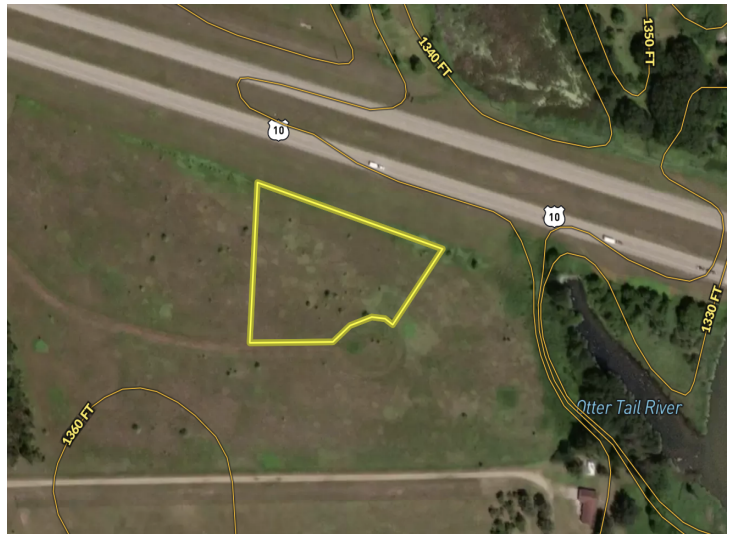
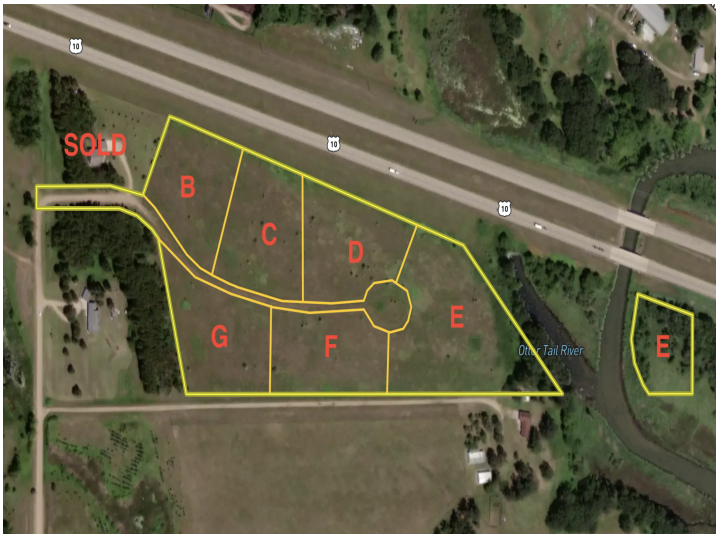
Affinity Real Estate - 600 Park Avenue South - Park Rapids MN 56470



website: www.AffinityRealEstate.com | email: info@affinityrealestate.com | office: 218-237-3333 | fax: 218-237-3377



\$27,500
MLS 6568194 Land
TBD D 423rd St
Perham MN 56573



website: www.AffinityRealEstate.com | email: info@affinityrealestate.com | office: 218-237-3333 | fax: 218-237-3377



\$27,500
 MLS 6568194 Land
 TBD D 423rd St
 Perham MN 56573