



MLS 6568303 Lake Home

**\$950,000**

3,036 sq ft  
5 bedrooms  
3 baths

6918 View Drive  
Walker MN 56484

Waterfront: Leech

Status: Pending

#### Description:

Here it is — a beautiful lake home on a level, sandy shoreline on the south shores of Leech Lake. This exquisite property offers a main floor primary suite, in-floor heating, a spacious attached garage. The luxury kitchen features high-end appliances and ample counter space, perfect for the avid cook. Enjoy the serene lake views from the screened-in porch, or entertain guests in the formal dining room. The bonus room above the garage provides additional space for a home office, guest suite, or recreational area. With its prime location, breathtaking views, and direct access to the Leech Lake, this home is ideal for swimming, boating, and fishing. Well maintained and move-in ready, this property is perfect as a private family retreat or a high-end rental. Don't miss your chance to own this exceptional lake home on Leech Lake. Schedule a showing today and experience luxurious lakeside living.

#### Additional Details:

Year Built	2011
Lot Acres	0.69
Lot Dimensions	119x260x120
Garage Stalls	2
School District	113
Taxes	\$4,222
Taxes with Assessments	\$4,288
Tax Year	2024

#### Additional Features:

**Basement:** None **Fuel:** Electric, Propane **Garage:** 2 **Heat:** Boiler, Dual, Forced Air, Fireplace(s), Radiant Floor **Sewer:** Private Sewer, Shared Septic **Water:** Private, Well **Air Conditioning:** Central Air

#### Driving Directions:

From Walker, Hwy 371 S to 200 E to N View Drive follow to home.



Listed By:  
Realty Group LLC

Affinity Real Estate Inc. participates in the Regional Multiple Listing Service of Minnesota, Inc Broker Reciprocity (sm) program, allowing us to display other broker's listings on our website. All properties are subject to prior sale, change or withdrawal.



Call Affinity Real Estate

**218-237-3333**

[info@affinityrealestate.com](mailto:info@affinityrealestate.com)



Affinity Real Estate - 600 Park Avenue South - Park Rapids MN 56470



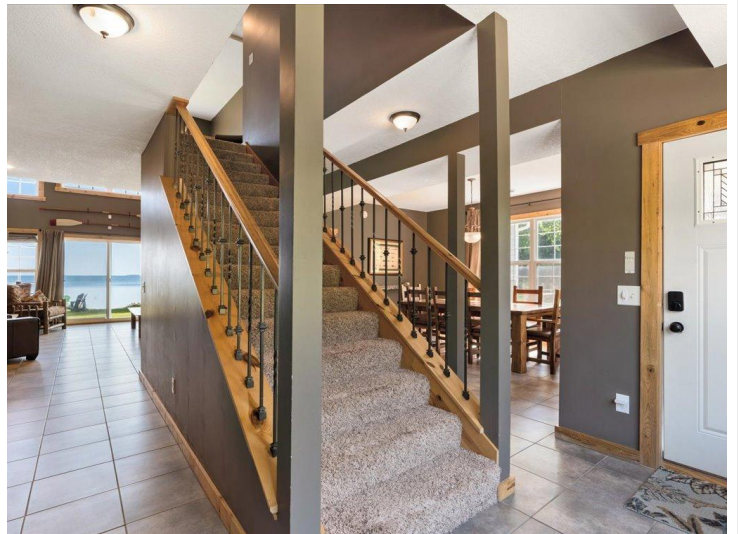


website: [www.AffinityRealEstate.com](http://www.AffinityRealEstate.com) | email: [info@affinityrealestate.com](mailto:info@affinityrealestate.com) | office: 218-237-3333 | fax: 218-237-3377

**Affinity**  
REAL ESTATE INC

**\$950,000**  
MLS 6568303 Lake Home  
6918 View Drive  
Walker MN 56484





website: [www.AffinityRealEstate.com](http://www.AffinityRealEstate.com) | email: [info@affinityrealestate.com](mailto:info@affinityrealestate.com) | office: 218-237-3333 | fax: 218-237-3377

**Affinity**  
REAL ESTATE INC

**\$950,000**  
MLS 6568303 Lake Home  
6918 View Drive  
Walker MN 56484





website: [www.AffinityRealEstate.com](http://www.AffinityRealEstate.com) | email: [info@affinityrealestate.com](mailto:info@affinityrealestate.com) | office: 218-237-3333 | fax: 218-237-3377

**Affinity**  
REAL ESTATE INC

**\$950,000**  
MLS 6568303 Lake Home  
6918 View Drive  
Walker MN 56484





website: [www.AffinityRealEstate.com](http://www.AffinityRealEstate.com) | email: [info@affinityrealestate.com](mailto:info@affinityrealestate.com) | office: 218-237-3333 | fax: 218-237-3377



**\$950,000**  
 MLS 6568303 Lake Home  
 6918 View Drive  
 Walker MN 56484





website: [www.AffinityRealEstate.com](http://www.AffinityRealEstate.com) | email: [info@affinityrealestate.com](mailto:info@affinityrealestate.com) | office: 218-237-3333 | fax: 218-237-3377



**\$950,000**  
 MLS 6568303 Lake Home  
 6918 View Drive  
 Walker MN 56484





website: [www.AffinityRealEstate.com](http://www.AffinityRealEstate.com) | email: [info@affinityrealestate.com](mailto:info@affinityrealestate.com) | office: 218-237-3333 | fax: 218-237-3377



**\$950,000**  
MLS 6568303 Lake Home  
6918 View Drive  
Walker MN 56484





website: [www.AffinityRealEstate.com](http://www.AffinityRealEstate.com) | email: [info@affinityrealestate.com](mailto:info@affinityrealestate.com) | office: 218-237-3333 | fax: 218-237-3377

**Affinity**  
REAL ESTATE INC

**\$950,000**  
MLS 6568303 Lake Home  
6918 View Drive  
Walker MN 56484





Size And Dimensions Are Approximate. Actual Measurements May Vary



Size And Dimensions Are Approximate. Actual Measurements May Vary

website: [www.AffinityRealEstate.com](http://www.AffinityRealEstate.com) | email: [info@affinityrealestate.com](mailto:info@affinityrealestate.com) | office: 218-237-3333 | fax: 218-237-3377



**\$950,000**  
 MLS 6568303 Lake Home  
 6918 View Drive  
 Walker MN 56484