



MLS 6568336 Lake Home

\$420,000

1,960 sq ft
4 bedrooms
3 baths

4181 Tall Timber Trail
Hackensack MN 56452

Waterfront: McKeown

Status: Active

Description:

Discover this tranquil retreat on the shores of McKeown Lake, offering 135' of level lakeshore. Enjoy the gentle whispers of the wind through beautiful red pines and the exclusivity of no public landing. This property is a gardener's paradise, with several gardens offering a lush, vibrant landscape. The spacious home includes four bedrooms and three bathrooms, ideal for families and guests. Enjoy stunning lake views from the porch, which features large windows that showcase the lake. The living room is centered around a cozy wood-burning fireplace, perfect for chilly evenings. Equipped with a Kinetico water system, your family will have abundant, clean, soft water on demand. Attached to the house is a large workshop, with an entrance leading to a 3-car garage, ensuring plenty of space for projects and storage. An additional pole barn is perfect for storing boats and other outdoor equipment. Venture into Man Lake with a small boat for more fishing opportunities. McKeown Lake has large and smallmouth bass, panfish, northern pike, and muskie. Embrace the perfect blend of tranquility and nature. Whether you are a gardener, a nature lover, or an avid angler, this property offers something for everyone.

Additional Details:

Year Built	1995
Lot Acres	1
Lot Dimensions	135x135x360x289
Garage Stalls	3
School District	113
Taxes	\$1,612
Taxes with Assessments	\$1,678
Tax Year	2024

Additional Features:

Fuel: Electric, Wood **Heat:** Baseboard, Fireplace(s), Radiant

Driving Directions:

From Longville - Head out of town on Co Rd 5 for 8.3 miles. Turn right onto McKeown Lake Rd NW for .8 miles. Turn right onto Tall Timber Trl NW to the subject property.



Listed By:
Heartland Real Estate

Affinity Real Estate Inc. participates in the Regional Multiple Listing Service of Minnesota, Inc Broker Reciprocity (sm) program, allowing us to display other broker's listings on our website. All properties are subject to prior sale, change or withdrawal.



Call Affinity Real Estate

218-237-3333

info@affinityrealestate.com



Affinity Real Estate - 600 Park Avenue South - Park Rapids MN 56470



website: www.AffinityRealEstate.com | email: info@affinityrealestate.com | office: 218-237-3333 | fax:218-237-3377



\$420,000
MLS 6568336 Lake Home
4181 Tall Timber Trail
Hackensack MN 56452



website: www.AffinityRealEstate.com | email: info@affinityrealestate.com | office: 218-237-3333 | fax:218-237-3377



\$420,000
MLS 6568336 Lake Home
4181 Tall Timber Trail
Hackensack MN 56452



website: www.AffinityRealEstate.com | email: info@affinityrealestate.com | office: 218-237-3333 | fax:218-237-3377



\$420,000
MLS 6568336 Lake Home
4181 Tall Timber Trail
Hackensack MN 56452



website: www.AffinityRealEstate.com | email: info@affinityrealestate.com | office: 218-237-3333 | fax:218-237-3377



\$420,000
MLS 6568336 Lake Home
4181 Tall Timber Trail
Hackensack MN 56452



website: www.AffinityRealEstate.com | email: info@affinityrealestate.com | office: 218-237-3333 | fax:218-237-3377



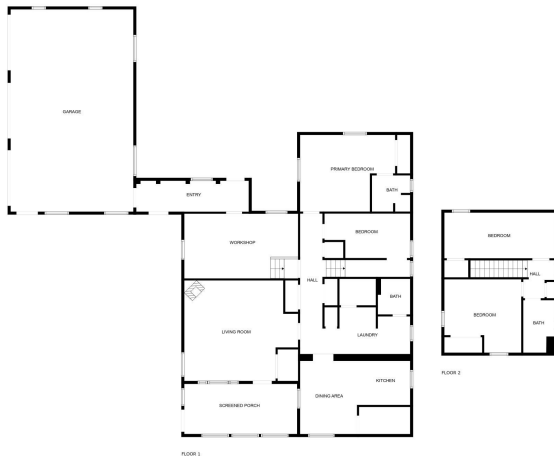
\$420,000
MLS 6568336 Lake Home
4181 Tall Timber Trail
Hackensack MN 56452



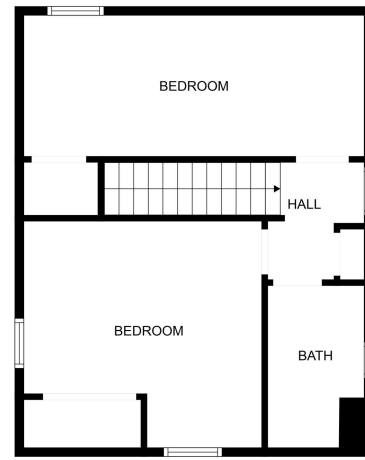
website: www.AffinityRealEstate.com | email: info@affinityrealestate.com | office: 218-237-3333 | fax:218-237-3377

Affinity
REAL ESTATE INC

\$420,000
MLS 6568336 Lake Home
4181 Tall Timber Trail
Hackensack MN 56452



FLOOR PLAN CREATED BY CURSCASA APP. MEASUREMENTS DEEMED HIGHLY RELIABLE BUT NOT GUARANTEED.



FLOOR PLAN CREATED BY CURSCASA APP. MEASUREMENTS DEEMED HIGHLY RELIABLE BUT NOT GUARANTEED.

website: www.AffinityRealEstate.com | email: info@affinityrealestate.com | office: 218-237-3333 | fax:218-237-3377



\$420,000
 MLS 6568336 Lake Home
 4181 Tall Timber Trail
 Hackensack MN 56452