



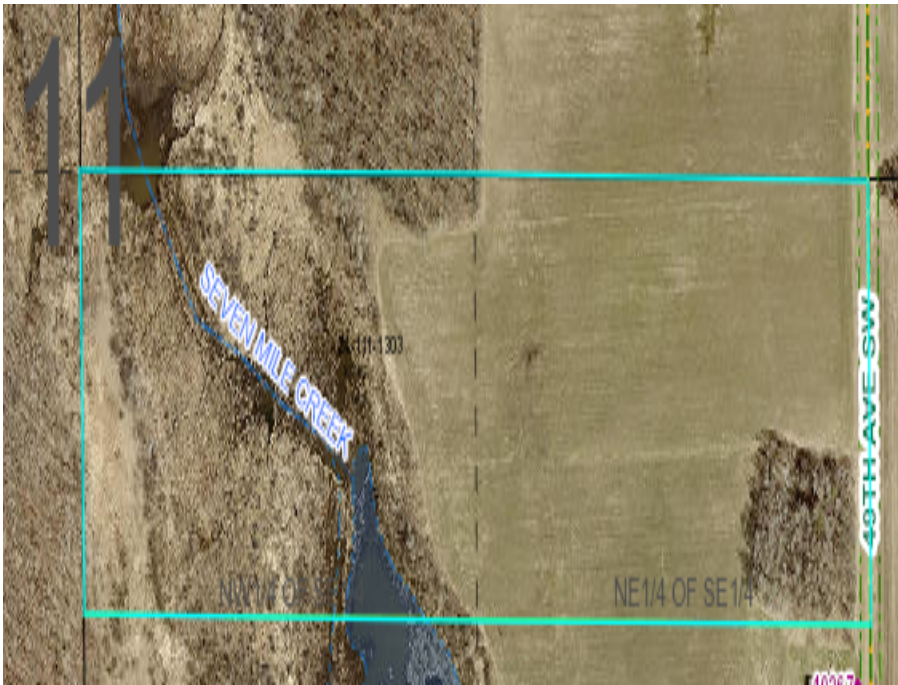
MLS 6568787 Land

\$130,000

40.57 Acres
Raw Land

XXXX XXXX
Motley MN 56473

Status: Active



Description:

Raw Land.

Additional Details:

Lot Acres	40.57
Lot Dimensions	2630x665
School District	116
Taxes	\$334
Taxes with Assessments	\$334
Tax Year	2024

Additional Features:

Driving Directions:

May Township, Cass County, MN



Listed By:
Integrity Realty

Affinity Real Estate Inc. participates in the Regional Multiple Listing Service of Minnesota, Inc Broker Reciprocity (sm) program, allowing us to display other broker's listings on our website. All properties are subject to prior sale, change or withdrawal.



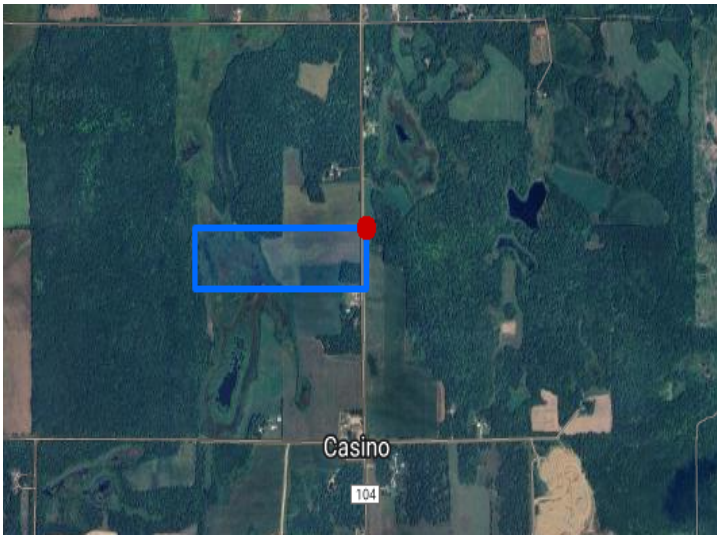
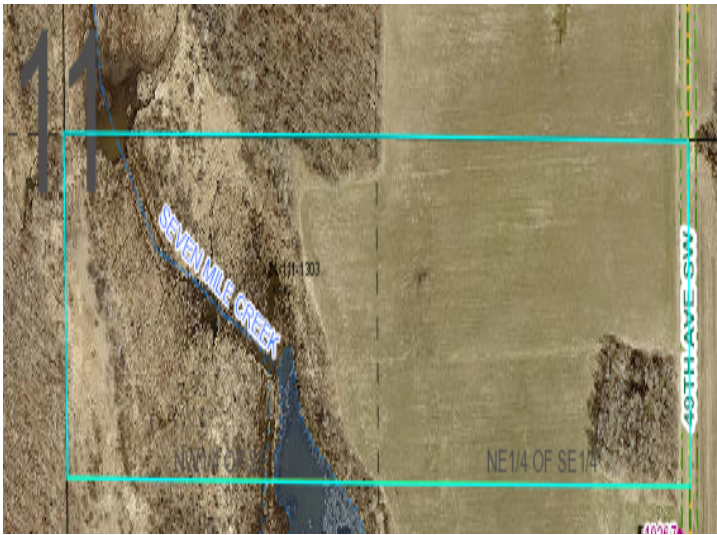
Call Affinity Real Estate

218-237-3333

info@affinityrealestate.com



Affinity Real Estate - 600 Park Avenue South - Park Rapids MN 56470



website: www.AffinityRealEstate.com | email: info@affinityrealestate.com | office: 218-237-3333 | fax:218-237-3377



\$130,000
MLS 6568787 Land
xxxx xxxx
Motley MN 56473