

MLS 6569000 Land

\$269,000

74.4 Acres
Raw Land

400 State Forest Rd 400
Osage MN 56570

Status: Active

Description:

THERE'S NOTHING LIKE DEER CAMP!!! That's where memories and traditions are built and passed on! Build that hunting shack you've always wanted on this 74.4 acres of raw hunting land. Close to Park Rapids. and Itasca State Park. Deer Permit Area 258. Some trails and food plot areas already in. Many deer and bear have been harvested on this piece of mostly rolling hills and hardwood forest.

Come take a look!

All financing options are open including Contract for Deed at 15% Down payment with a 20 Year balloon. Payment interest can be negotiated.

Additional Details:

Lot Acres	74.4
Lot Dimensions	2616x404x2616x404
School District	309
Taxes	\$734
Taxes with Assessments	\$734
Tax Year	2023

Additional Features:

Driving Directions:

State Hwy 71 North out of Park Rapids 12 Miles to Hubbard Cnty Rd 41. Go West on Cty 41 to Cty 152 (County Line Rd). Go South on Cty 152 to State Forest Rd 400. Continue South on Minimum Maintenance Rd for 1.1 Miles, Property will be on the left. Follow Signs to property.



Listed By:
Elevate Realty LLC

Affinity Real Estate Inc. participates in the Regional Multiple Listing Service of Minnesota, Inc Broker Reciprocity (sm) program, allowing us to display other broker's listings on our website. All properties are subject to prior sale, change or withdrawal.



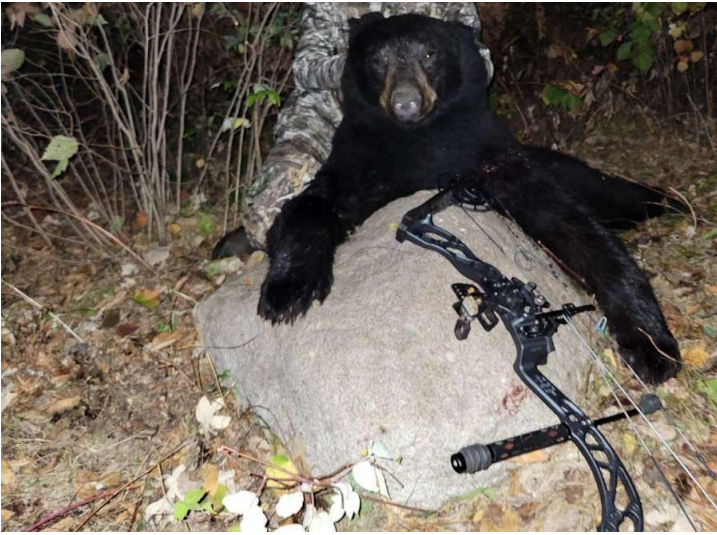
Call Affinity Real Estate

218-237-3333

info@affinityrealestate.com



Affinity Real Estate - 600 Park Avenue South - Park Rapids MN 56470



website: www.AffinityRealEstate.com | email: info@affinityrealestate.com | office: 218-237-3333 | fax:218-237-3377

Affinity
REAL ESTATE INC

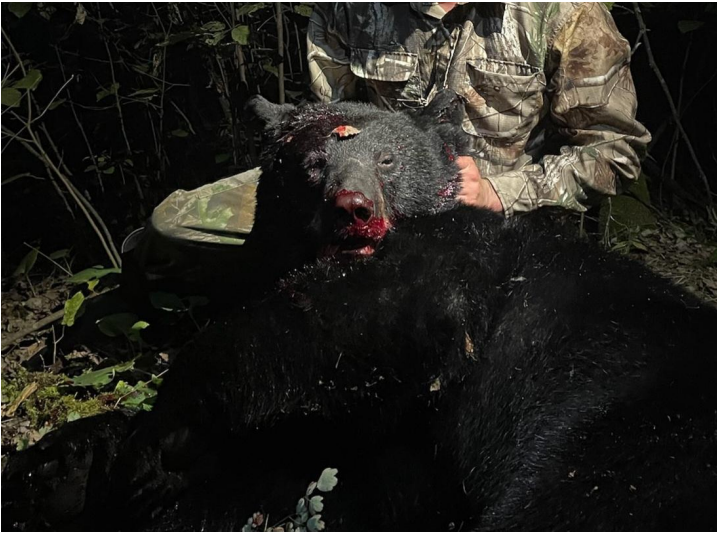
\$269,000
MLS 6569000 Land
400 State Forest Rd 400
Osage MN 56570



website: www.AffinityRealEstate.com | email: info@affinityrealestate.com | office: 218-237-3333 | fax:218-237-3377



\$269,000
MLS 6569000 Land
400 State Forest Rd 400
Osage MN 56570



website: www.AffinityRealEstate.com | email: info@affinityrealestate.com | office: 218-237-3333 | fax:218-237-3377



\$269,000
MLS 6569000 Land
400 State Forest Rd 400
Osage MN 56570