



MLS 6569205 Land

**\$695,000**

32.38 Acres  
Raw Land

TBD MN Hwy 371  
Pequot Lakes MN 56472

Status: Active

**Description:**

On the north side of Pequot Lakes 2400 feet along State Hwy 371 between county roads 11 & 16. Approximately 1800 feet along Paul Bunyan Trail. This property is perfectly located between the Paul Bunyan Trail and MN Hwy 371 next to Patriot Ave intersection. Your business could cater to the walkers, bikers, snowmobilers coming off the trail or to the travelers on 4 lane 371. With a hotel, campground, and golf course to the north and the city to the south your business could thrive here. Access from Langenbau Rd on the south. 371 has a right turn lane near north boundary.

**Additional Details:**

Lot Acres	32.38
Lot Dimensions	2422x638x1789x412x312
School District	186
Taxes	\$642
Taxes with Assessments	\$642
Tax Year	2024

**Additional Features:**

**Driving Directions:**

Property on the west side of 371 north of Patriot Ave.. Go west on Patriot Ave to first right, Langenbau Rd. From the north go south on 371 from city rd 16 intersection 1st R turn lane after power line, gravel rd.



Listed By:  
RE/MAX Results - Crosslake

Affinity Real Estate Inc. participates in the Regional Multiple Listing Service of Minnesota, Inc Broker Reciprocity (sm) program, allowing us to display other broker's listings on our website. All properties are subject to prior sale, change or withdrawal.



Call Affinity Real Estate

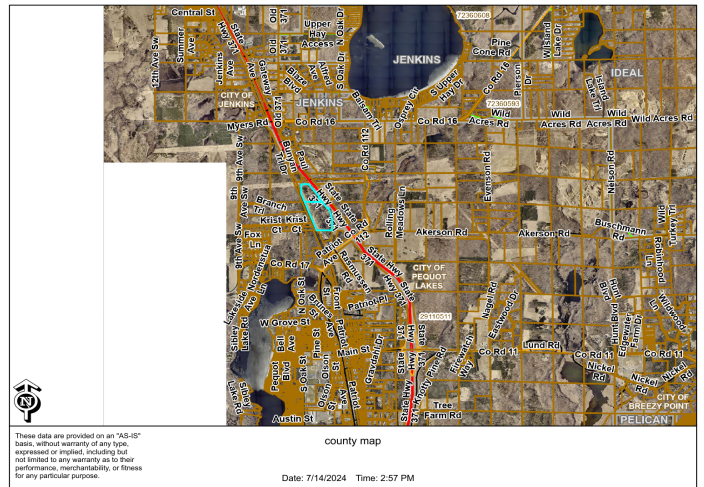
**218-237-3333**

[info@affinityrealestate.com](mailto:info@affinityrealestate.com)



Affinity Real Estate - 600 Park Avenue South - Park Rapids MN 56470





website: [www.AffinityRealEstate.com](http://www.AffinityRealEstate.com) | email: [info@affinityrealestate.com](mailto:info@affinityrealestate.com) | office: 218-237-3333 | fax:218-237-3377



**\$695,000**  
 MLS 6569205 Land  
 TBD MN Hwy 371  
 Pequot Lakes MN 56472





website: [www.AffinityRealEstate.com](http://www.AffinityRealEstate.com) | email: [info@affinityrealestate.com](mailto:info@affinityrealestate.com) | office: 218-237-3333 | fax:218-237-3377



**\$695,000**  
MLS 6569205 Land  
TBD MN Hwy 371  
Pequot Lakes MN 56472





website: [www.AffinityRealEstate.com](http://www.AffinityRealEstate.com) | email: [info@affinityrealestate.com](mailto:info@affinityrealestate.com) | office: 218-237-3333 | fax:218-237-3377



**\$695,000**  
MLS 6569205 Land  
TBD MN Hwy 371  
Pequot Lakes MN 56472