



MLS 6569441 Lake Home

**\$389,900**

1,260 sq ft  
3 bedrooms  
2 baths

39270 Oriole Drive  
Laporte MN 56461

Waterfront: Alice

Status: Active

**Description:**

Charming 3-bedroom, 2-bathroom lake home on the beautiful private Lake Alice. Set on 12 acres that border thousands of acres of public land, this property offers tranquility and privacy on a low-traffic dead-end road. Enjoy proximity to ATV and snowmobile trails, and just a short drive to Itasca State Park. Located centrally between Walker, Bemidji, and Park Rapids for easy access to shopping and entertainment. Alice Lake provides excellent fishing opportunities with record-sized fish. Two storage sheds, including one for game and fish cleaning, plus plenty of cut firewood for the fireplace. The home features a wraparound deck, AC, forced air heat, gas cook stove, washer/dryer, and is sold fully furnished with dock, boat lift, pontoon, and all kitchen and bedding essentials. A fantastic outdoor retreat. Don't miss this turnkey opportunity to enjoy winter weekends cuddled by the cozy fireplace or beautiful summer mornings and evenings spent on the lake facing deck or pontoon.!

**Additional Details:**

Year Built	2005
Lot Acres	10.81
Lot Dimensions	1700x300
School District	309
Taxes	\$1,224
Taxes with Assessments	\$1,224
Tax Year	2023

**Additional Features:**

**Basement:** Slab **Fuel:** Electric, Propane, Wood **Heat:** Baseboard, Forced Air, Wood Stove **Sewer:** Private Sewer, Tank with Drainage Field **Water:** Private, Sand Point, Well **Air Conditioning:** Central Air

**Driving Directions:**

NORTH ON #4 TO LAKE GEORGE, WEST on #71 TO #3, 2.6 MILES, RIGHT TO 390TH ST. RIGHT TO ORIOLE DRIVE, CONTINUE LEFT TO # 39270



Listed By:  
eXp Realty

Affinity Real Estate Inc. participates in the Regional Multiple Listing Service of Minnesota, Inc Broker Reciprocity (sm) program, allowing us to display other broker's listings on our website. All properties are subject to prior sale, change or withdrawal.



Call Affinity Real Estate

**218-237-3333**

[info@affinityrealestate.com](mailto:info@affinityrealestate.com)



Affinity Real Estate - 600 Park Avenue South - Park Rapids MN 56470





website: [www.AffinityRealEstate.com](http://www.AffinityRealEstate.com) | email: [info@affinityrealestate.com](mailto:info@affinityrealestate.com) | office: 218-237-3333 | fax: 218-237-3377

**Affinity**  
REAL ESTATE INC

**\$389,900**  
MLS 6569441 Lake Home  
39270 Oriole Drive  
Laporte MN 56461





website: [www.AffinityRealEstate.com](http://www.AffinityRealEstate.com) | email: [info@affinityrealestate.com](mailto:info@affinityrealestate.com) | office: 218-237-3333 | fax: 218-237-3377

**Affinity**  
REAL ESTATE INC

**\$389,900**  
MLS 6569441 Lake Home  
39270 Oriole Drive  
Laporte MN 56461





website: [www.AffinityRealEstate.com](http://www.AffinityRealEstate.com) | email: [info@affinityrealestate.com](mailto:info@affinityrealestate.com) | office: 218-237-3333 | fax: 218-237-3377

**Affinity**  
REAL ESTATE INC

**\$389,900**  
MLS 6569441 Lake Home  
39270 Oriole Drive  
Laporte MN 56461





website: [www.AffinityRealEstate.com](http://www.AffinityRealEstate.com) | email: [info@affinityrealestate.com](mailto:info@affinityrealestate.com) | office: 218-237-3333 | fax:218-237-3377

**Affinity**  
REAL ESTATE INC

**\$389,900**  
MLS 6569441 Lake Home  
39270 Oriole Drive  
Laporte MN 56461





website: [www.AffinityRealEstate.com](http://www.AffinityRealEstate.com) | email: [info@affinityrealestate.com](mailto:info@affinityrealestate.com) | office: 218-237-3333 | fax:218-237-3377

**Affinity**  
REAL ESTATE INC

**\$389,900**  
MLS 6569441 Lake Home  
39270 Oriole Drive  
Laporte MN 56461





website: [www.AffinityRealEstate.com](http://www.AffinityRealEstate.com) | email: [info@affinityrealestate.com](mailto:info@affinityrealestate.com) | office: 218-237-3333 | fax:218-237-3377

**Affinity**  
REAL ESTATE INC

**\$389,900**  
MLS 6569441 Lake Home  
39270 Oriole Drive  
Laporte MN 56461





website: [www.AffinityRealEstate.com](http://www.AffinityRealEstate.com) | email: [info@affinityrealestate.com](mailto:info@affinityrealestate.com) | office: 218-237-3333 | fax:218-237-3377



**\$389,900**  
MLS 6569441 Lake Home  
39270 Oriole Drive  
Laporte MN 56461



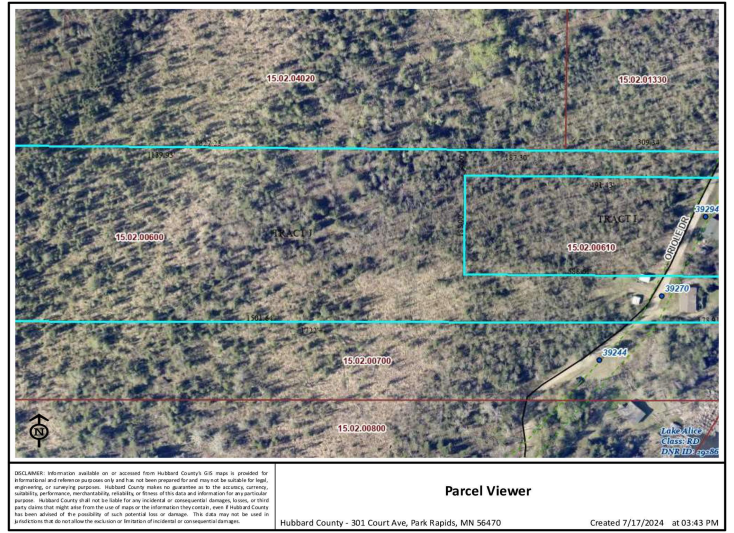


website: [www.AffinityRealEstate.com](http://www.AffinityRealEstate.com) | email: [info@affinityrealestate.com](mailto:info@affinityrealestate.com) | office: 218-237-3333 | fax:218-237-3377



**\$389,900**  
MLS 6569441 Lake Home  
39270 Oriole Drive  
Laporte MN 56461





website: [www.AffinityRealEstate.com](http://www.AffinityRealEstate.com) | email: [info@affinityrealestate.com](mailto:info@affinityrealestate.com) | office: 218-237-3333 | fax:218-237-3377



**\$389,900**  
 MLS 6569441 Lake Home  
 39270 Oriole Drive  
 Laporte MN 56461