

MLS 6569690 Land

\$39,900

1.64 Acres
Finished Lot(s)

XXX Lot 3 130th Street
Staples MN 56479

Status: Active

Description:

PID - 13-410-0080. Nicely wooded lot available on 18-hole golf course with club house offering seasonal dining. Nearly 1.7 acres available to build your new home. Located just 10 minutes north of Staples, 30 minutes from the Brainerd Lakes area. Beautiful location; Living Legacy Gardens just a few minutes away and within walking distance of Crow Wing River.

Additional Details:

Lot Acres	1.64
Lot Dimensions	327x206x226x201x102
School District	2170
Taxes	\$98
Taxes with Assessments	\$98
Tax Year	2024

Additional Features:

Driving Directions:

From State Hwy 210 in Staples turn north on Cardinal Drive to left (north) turn on Airport Road, continue north to property on right. See sign.



Listed By:
Edina Realty, Inc.

Affinity Real Estate Inc. participates in the Regional Multiple Listing Service of Minnesota, Inc Broker Reciprocity (sm) program, allowing us to display other broker's listings on our website. All properties are subject to prior sale, change or withdrawal.



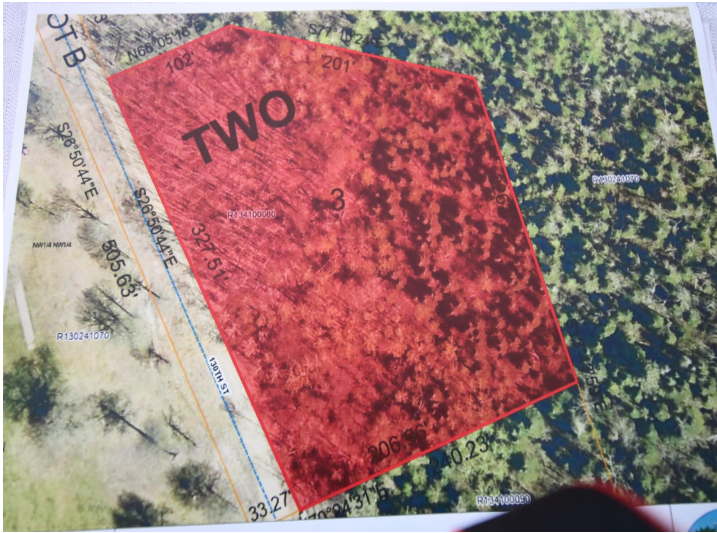
Call Affinity Real Estate

218-237-3333

info@affinityrealestate.com



Affinity Real Estate - 600 Park Avenue South - Park Rapids MN 56470



website: www.AffinityRealEstate.com | email: info@affinityrealestate.com | office: 218-237-3333 | fax:218-237-3377



\$39,900
MLS 6569690 Land
XXX Lot 3 130th Street
Staples MN 56479