



MLS 6569808 Lake Home

\$305,900

1,320 sq ft
3 bedrooms
2 baths

34302 Twin Island Lane
Dent MN 56528

Waterfront: McDonald

Status: Active

Description:

McDonald Lake! This 3 bed/2 bath home features a 36x19 foot deck overlooking the lake, an outdoor shower and a fabulous firepit area! 188 feet of frontage and includes the dock! Open kitchen, dining, living area. Large primary suite with an oversized walk-in shower. walk in closet and a double sink in the bathroom. Deep well, compliant septic system with drain field. 30-amp electrical service at the lake. 12x12 storage shed. Covenants do apply.

Additional Details:

Year Built	2020
Lot Acres	1.5
Lot Dimensions	374x188x361x57
School District	549
Taxes	\$2,290
Taxes with Assessments	\$2,290
Tax Year	2024

Additional Features:

Basement: None **Fuel:** Propane **Heat:** Forced Air **Sewer:** Private Sewer, Septic System Compliant - Yes **Water:** Drilled, Private **Air Conditioning:** Central Air

Driving Directions:

34302 Twin Island LN, Dent



Listed By:
Coldwell Banker Preferred Partners

Affinity Real Estate Inc. participates in the Regional Multiple Listing Service of Minnesota, Inc Broker Reciprocity (sm) program, allowing us to display other broker's listings on our website. All properties are subject to prior sale, change or withdrawal.



Call Affinity Real Estate

218-237-3333

info@affinityrealestate.com



Affinity Real Estate - 600 Park Avenue South - Park Rapids MN 56470



website: www.AffinityRealEstate.com | email: info@affinityrealestate.com | office: 218-237-3333 | fax: 218-237-3377

Affinity
REAL ESTATE INC

\$305,900
MLS 6569808 Lake Home
34302 Twin Island Lane
Dent MN 56528



website: www.AffinityRealEstate.com | email: info@affinityrealestate.com | office: 218-237-3333 | fax:218-237-3377

Affinity
REAL ESTATE INC

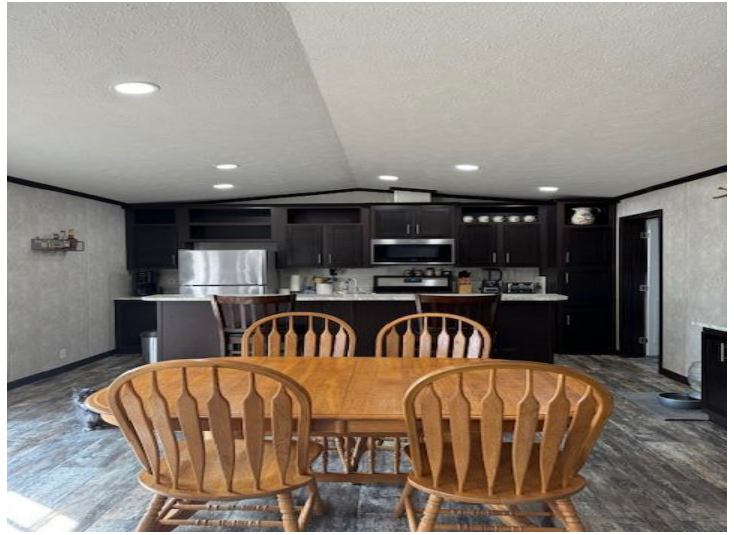
\$305,900
MLS 6569808 Lake Home
34302 Twin Island Lane
Dent MN 56528



website: www.AffinityRealEstate.com | email: info@affinityrealestate.com | office: 218-237-3333 | fax:218-237-3377

Affinity
REAL ESTATE INC

\$305,900
MLS 6569808 Lake Home
34302 Twin Island Lane
Dent MN 56528



website: www.AffinityRealEstate.com | email: info@affinityrealestate.com | office: 218-237-3333 | fax:218-237-3377

Affinity
REAL ESTATE INC

\$305,900
MLS 6569808 Lake Home
34302 Twin Island Lane
Dent MN 56528



website: www.AffinityRealEstate.com | email: info@affinityrealestate.com | office: 218-237-3333 | fax: 218-237-3377

Affinity
REAL ESTATE INC

\$305,900
MLS 6569808 Lake Home
34302 Twin Island Lane
Dent MN 56528



website: www.AffinityRealEstate.com | email: info@affinityrealestate.com | office: 218-237-3333 | fax:218-237-3377



\$305,900
MLS 6569808 Lake Home
34302 Twin Island Lane
Dent MN 56528