



MLS 6570148 Lake Home

\$2,499,900

5,305 sq ft
5 bedrooms
6 baths

27620 Island View Drive
Park Rapids MN 56470

Waterfront: Mantrap

Status: Expired

Description:

A once-in-a-lifetime find on highly regarded Big Mantrap Lake! This is such an extraordinary estate with so much to offer. Includes an attractive two story home with 5 bedrooms, 4+ baths and a full walkout basement totalling 5,300 finished square feet. It features a grand display of windows, hickory cabinets, granite counters, hardwoods/tile, 2 fireplaces, hot tub, sauna, multi-level decking, fiber optic internet and so much more! The entire arrangement is thoughtful and coalesces the indoor and outdoor spaces to perfection. Additionally, there is an 8,600 square foot, multi-use sports complex that is absolutely next level. Built by Kraus-Anderson at the highest level of quality standards. Features poured concrete walls, fabricated staircases, viewing area, workout space, kitchenette, 1/2 bath and commercial air/heat control. The court is full size and caters to all things recreational. Enjoy tennis, basketball, volleyball, pickleball and a retractable batting cage. There is even synthetic ice for the hockey enthusiasts. Sits on nearly 3 acres with 300ft of shoreline. The setting is beautiful, provides privacy and convenient blacktop access with no dirt roads to travel. Big Mantrap Lake feeds the entire Mantrap chain of lakes and is well known for its limited development, clean waters, natural beauty and renowned Muskie fishing. Truly a captivating property!

Additional Details:

Year Built	1993
Lot Acres	2.62
Lot Dimensions	300 x 355 x 316 x 404
Garage Stalls	3
School District	309
Taxes	\$14,658
Taxes with Assessments	\$14,867
Tax Year	2024

Additional Features:

Basement: Egress Window(s), Finished, Full, Walkout **Fuel:** Propane **Garage:** 3 **Heat:** Forced Air, Fireplace(s), Radiant Floor **Sewer:** Private Sewer, Septic System Compliant - Yes, Tank with Drainage Field **Water:** Drilled, Private, Well **Air Conditioning:** Central Air

Driving Directions:

From Dorset: Go North on CR 7 to a left on Island View Drive. Proceed to the property.



Listed By:
Affinity Real Estate Inc.

Affinity Real Estate Inc. participates in the Regional Multiple Listing Service of Minnesota, Inc Broker Reciprocity (sm) program, allowing us to display other broker's listings on our website. All properties are subject to prior sale, change or withdrawal.



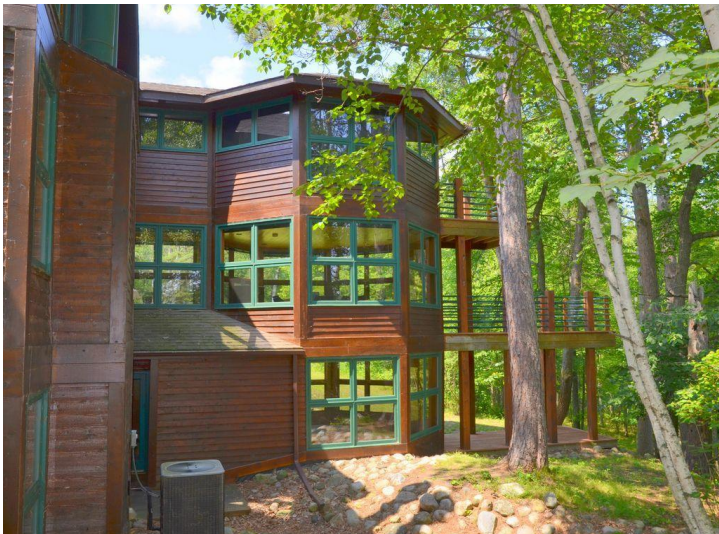
Call Affinity Real Estate

218-237-3333

info@affinityrealestate.com



Affinity Real Estate - 600 Park Avenue South - Park Rapids MN 56470



website: www.AffinityRealEstate.com | email: info@affinityrealestate.com | office: 218-237-3333 | fax:218-237-3377



\$2,499,900
MLS 6570148 Lake Home
27620 Island View Drive
Park Rapids MN 56470



website: www.AffinityRealEstate.com | email: info@affinityrealestate.com | office: 218-237-3333 | fax:218-237-3377



\$2,499,900
MLS 6570148 Lake Home
27620 Island View Drive
Park Rapids MN 56470



website: www.AffinityRealEstate.com | email: info@affinityrealestate.com | office: 218-237-3333 | fax:218-237-3377

Affinity
REAL ESTATE INC

\$2,499,900
MLS 6570148 Lake Home
27620 Island View Drive
Park Rapids MN 56470



website: www.AffinityRealEstate.com | email: info@affinityrealestate.com | office: 218-237-3333 | fax:218-237-3377

Affinity
REAL ESTATE INC

\$2,499,900
MLS 6570148 Lake Home
27620 Island View Drive
Park Rapids MN 56470



website: www.AffinityRealEstate.com | email: info@affinityrealestate.com | office: 218-237-3333 | fax:218-237-3377

Affinity
REAL ESTATE INC

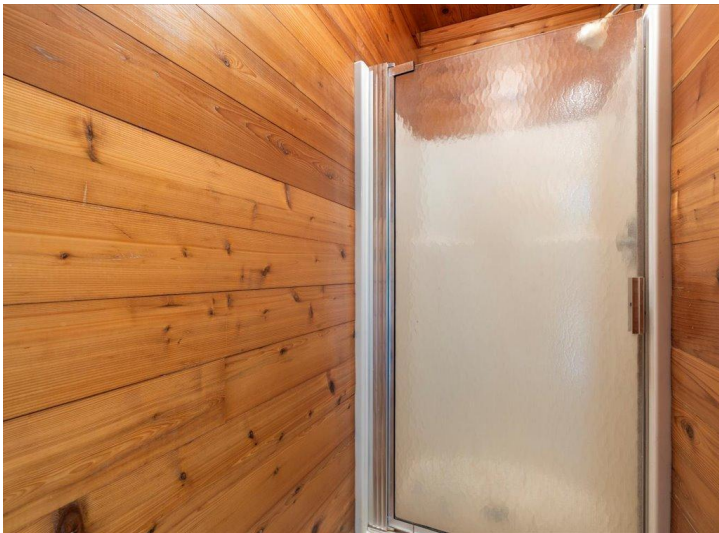
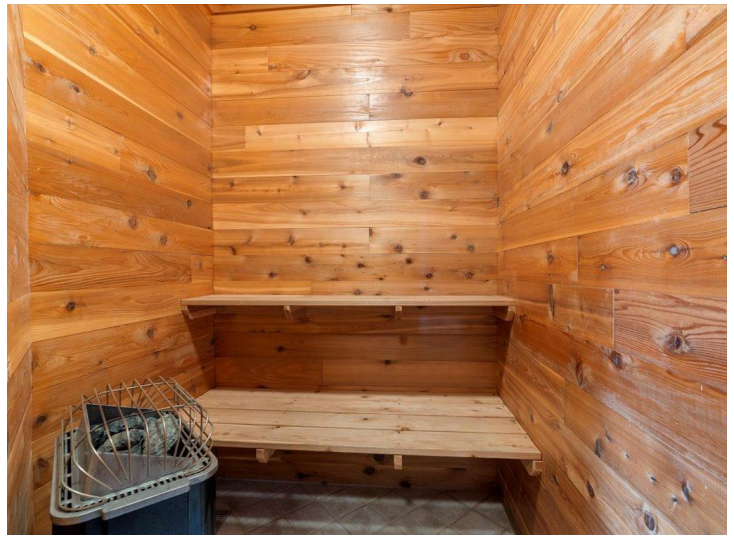
\$2,499,900
MLS 6570148 Lake Home
27620 Island View Drive
Park Rapids MN 56470



website: www.AffinityRealEstate.com | email: info@affinityrealestate.com | office: 218-237-3333 | fax:218-237-3377



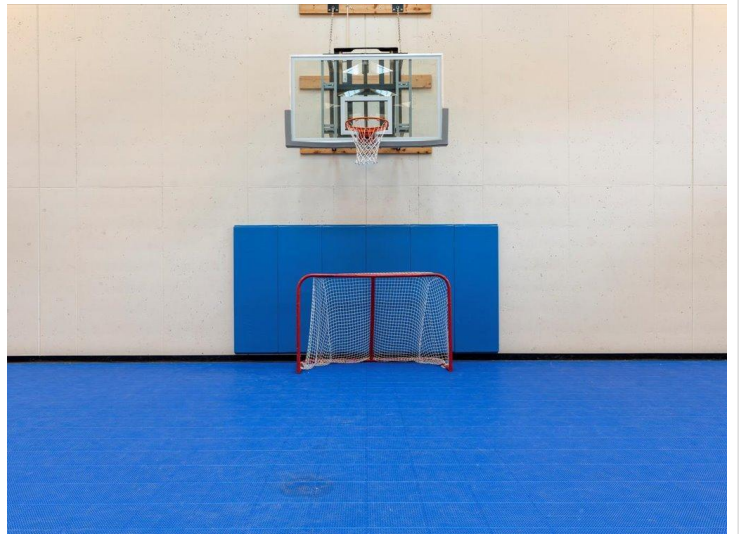
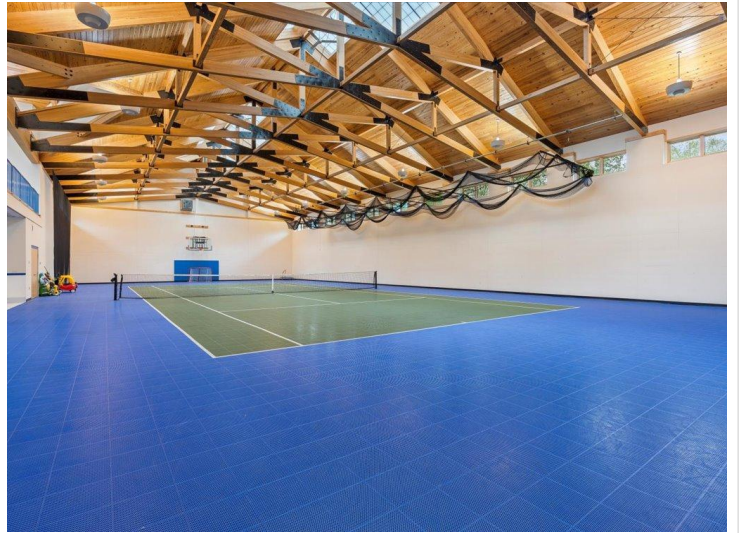
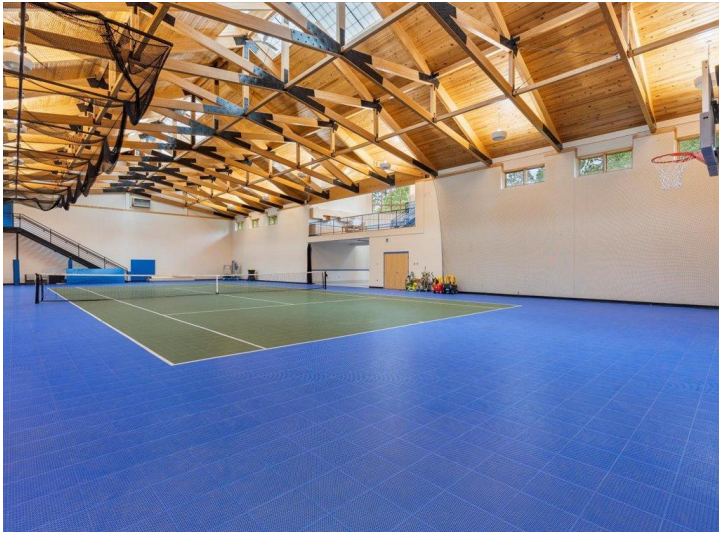
\$2,499,900
MLS 6570148 Lake Home
27620 Island View Drive
Park Rapids MN 56470



website: www.AffinityRealEstate.com | email: info@affinityrealestate.com | office: 218-237-3333 | fax:218-237-3377



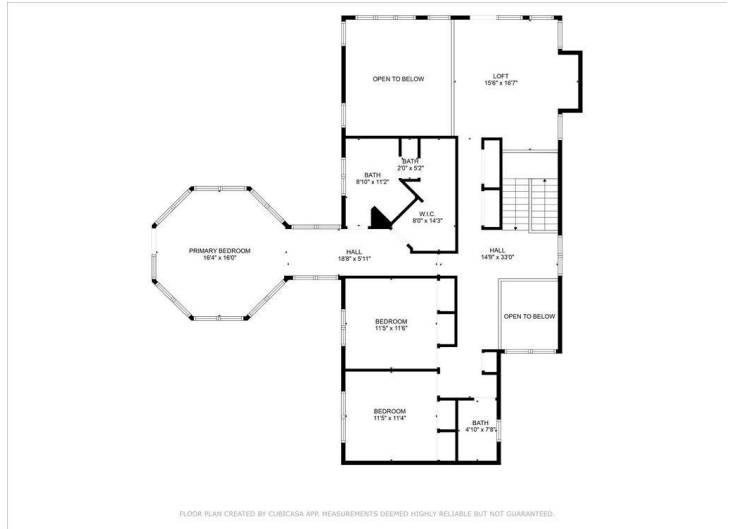
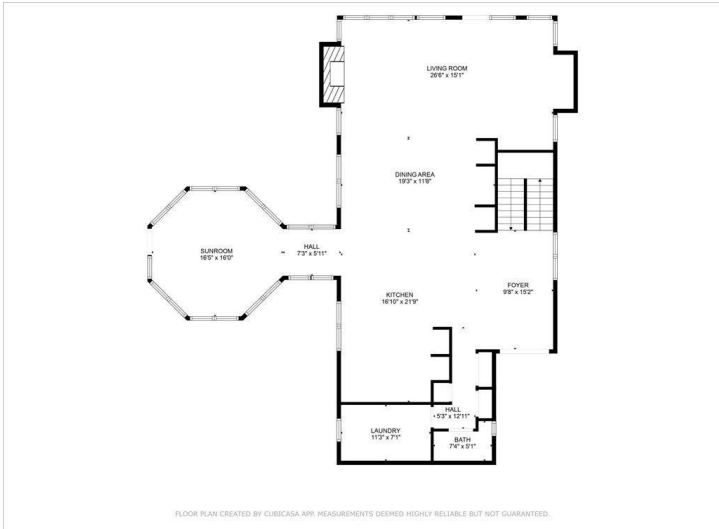
\$2,499,900
MLS 6570148 Lake Home
27620 Island View Drive
Park Rapids MN 56470



website: www.AffinityRealEstate.com | email: info@affinityrealestate.com | office: 218-237-3333 | fax:218-237-3377



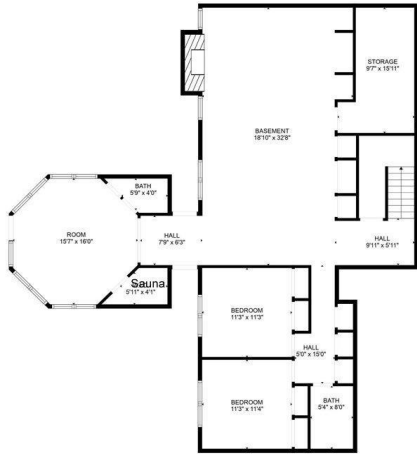
\$2,499,900
MLS 6570148 Lake Home
27620 Island View Drive
Park Rapids MN 56470



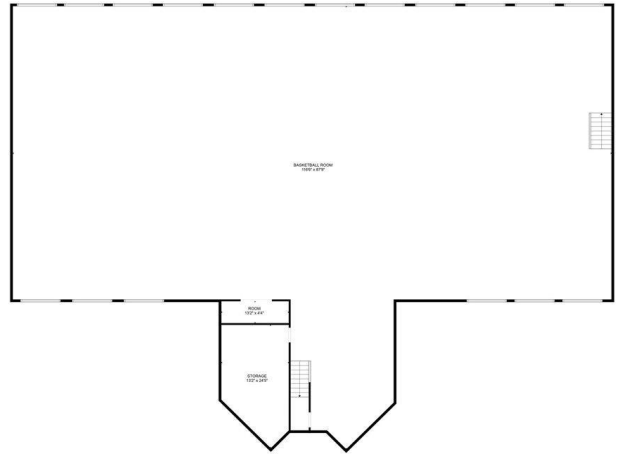
website: www.AffinityRealEstate.com | email: info@affinityrealestate.com | office: 218-237-3333 | fax: 218-237-3377



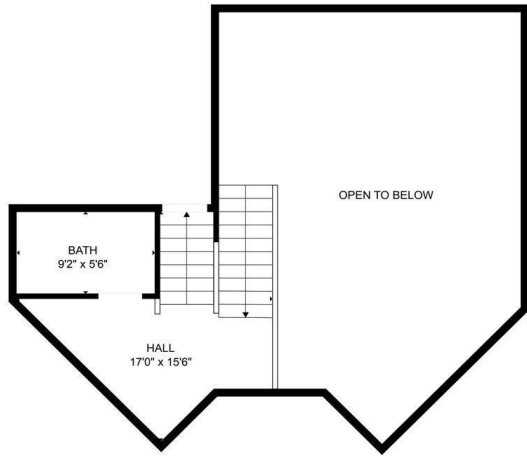
\$2,499,900
 MLS 6570148 Lake Home
 27620 Island View Drive
 Park Rapids MN 56470



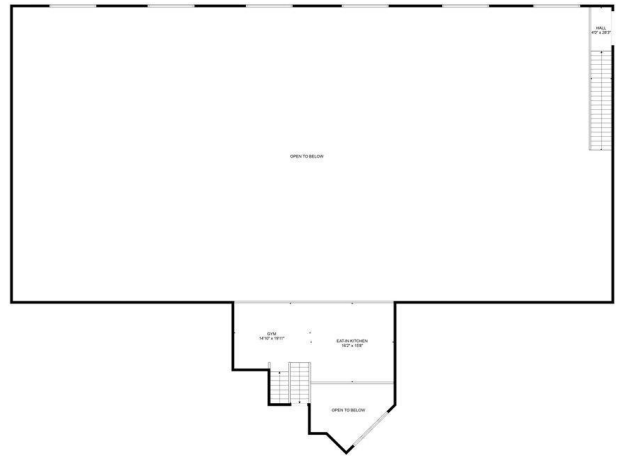
FLOOR PLAN CREATED BY CUBICASA APP. MEASUREMENTS DEEMED HIGHLY RELIABLE BUT NOT GUARANTEED.



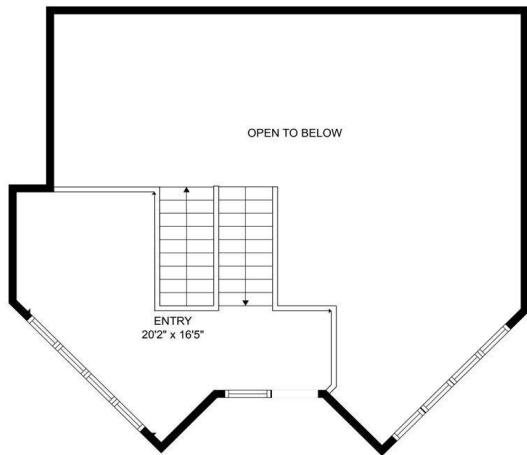
FLOOR PLAN CREATED BY CUBICASA APP. MEASUREMENTS DEEMED HIGHLY RELIABLE BUT NOT GUARANTEED.



FLOOR PLAN CREATED BY CUBICASA APP. MEASUREMENTS DEEMED HIGHLY RELIABLE BUT NOT GUARANTEED.



FLOOR PLAN CREATED BY CUBICASA APP. MEASUREMENTS DEEMED HIGHLY RELIABLE BUT NOT GUARANTEED.



FLOOR PLAN CREATED BY CUBICASA APP. MEASUREMENTS DEEMED HIGHLY RELIABLE BUT NOT GUARANTEED.

website: www.AffinityRealEstate.com | email: info@affinityrealestate.com | office: 218-237-3333 | fax: 218-237-3377



\$2,499,900
 MLS 6570148 Lake Home
 27620 Island View Drive
 Park Rapids MN 56470