



MLS 6570466 Residential

**\$349,900**

2,668 sq ft  
4 bedrooms  
3 baths

516 28th Street  
Bemidji MN 56601

Status: Active

**Description:**

Step into this inviting 4-bedroom, 3-bath home with a dedicated main floor office/craft room. There is tons of storage so you can stay organized and reduce clutter. The spacious dining room opens into a backyard deck through the sliding glass doors. Outside, a private oasis awaits with a gas firepit in the secluded backyard. Additional features include an outbuilding suitable for a playhouse or studio, two detached garages, and a unique bridge connecting the circle driveway. Perfectly blending comfort and practicality with the most convenient location. All this located on a spacious, beautiful double lot.

**Additional Details:**

Year Built	1960
Lot Acres	0.6
Lot Dimensions	200x130
Garage Stalls	3
School District	31
Taxes	\$3,006
Taxes with Assessments	\$3,006
Tax Year	2024

**Additional Features:**

**Basement:** Egress Window(s), Finished **Fuel:** Natural Gas **Garage:** 3 **Heat:** Forced Air **Sewer:** City Sewer/Connected **Water:** Well **Air Conditioning:** Central Air

**Driving Directions:**

From Bemidji, North on Irvine Ave, left on 28th St. Property on left.



Listed By:  
Coldwell Banker Crown Realtors

Affinity Real Estate Inc. participates in the Regional Multiple Listing Service of Minnesota, Inc Broker Reciprocity (sm) program, allowing us to display other broker's listings on our website. All properties are subject to prior sale, change or withdrawal.



**Call Affinity Real Estate**

**218-237-3333**

**info@affinityrealestate.com**



**Affinity Real Estate - 600 Park Avenue South - Park Rapids MN 56470**



website: [www.AffinityRealEstate.com](http://www.AffinityRealEstate.com) | email: [info@affinityrealestate.com](mailto:info@affinityrealestate.com) | office: 218-237-3333 | fax:218-237-3377



**\$349,900**  
MLS 6570466 Residential  
516 28th Street  
Bemidji MN 56601



website: [www.AffinityRealEstate.com](http://www.AffinityRealEstate.com) | email: [info@affinityrealestate.com](mailto:info@affinityrealestate.com) | office: 218-237-3333 | fax:218-237-3377



**\$349,900**  
MLS 6570466 Residential  
516 28th Street  
Bemidji MN 56601



website: [www.AffinityRealEstate.com](http://www.AffinityRealEstate.com) | email: [info@affinityrealestate.com](mailto:info@affinityrealestate.com) | office: 218-237-3333 | fax:218-237-3377



**\$349,900**  
MLS 6570466 Residential  
516 28th Street  
Bemidji MN 56601



website: [www.AffinityRealEstate.com](http://www.AffinityRealEstate.com) | email: [info@affinityrealestate.com](mailto:info@affinityrealestate.com) | office: 218-237-3333 | fax: 218-237-3377

**Affinity**  
REAL ESTATE INC

**\$349,900**  
MLS 6570466 Residential  
516 28th Street  
Bemidji MN 56601



website: [www.AffinityRealEstate.com](http://www.AffinityRealEstate.com) | email: [info@affinityrealestate.com](mailto:info@affinityrealestate.com) | office: 218-237-3333 | fax:218-237-3377



**\$349,900**  
MLS 6570466 Residential  
516 28th Street  
Bemidji MN 56601



website: [www.AffinityRealEstate.com](http://www.AffinityRealEstate.com) | email: [info@affinityrealestate.com](mailto:info@affinityrealestate.com) | office: 218-237-3333 | fax: 218-237-3377

**Affinity**  
REAL ESTATE INC

**\$349,900**  
MLS 6570466 Residential  
516 28th Street  
Bemidji MN 56601

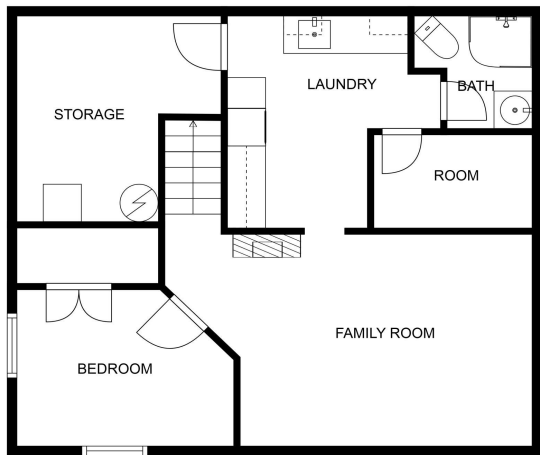


website: [www.AffinityRealEstate.com](http://www.AffinityRealEstate.com) | email: [info@affinityrealestate.com](mailto:info@affinityrealestate.com) | office: 218-237-3333 | fax:218-237-3377

**Affinity**  
REAL ESTATE INC

**\$349,900**  
MLS 6570466 Residential  
516 28th Street  
Bemidji MN 56601





FLOOR PLAN CREATED BY CUBICASA APP. MEASUREMENTS DEEMED HIGHLY RELIABLE BUT NOT GUARANTEED.

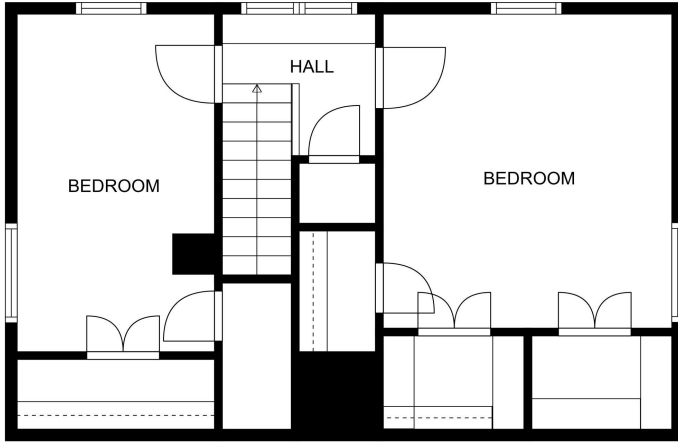


FLOOR PLAN CREATED BY CUBICASA APP. MEASUREMENTS DEEMED HIGHLY RELIABLE BUT NOT GUARANTEED.

website: [www.AffinityRealEstate.com](http://www.AffinityRealEstate.com) | email: [info@affinityrealestate.com](mailto:info@affinityrealestate.com) | office: 218-237-3333 | fax: 218-237-3377



**\$349,900**  
 MLS 6570466 Residential  
 516 28th Street  
 Bemidji MN 56601



FLOOR PLAN CREATED BY CUBICASA APP. MEASUREMENTS DEEMED HIGHLY RELIABLE BUT NOT GUARANTEED.



FLOOR 2

FLOOR 3



FLOOR 1

FLOOR PLAN CREATED BY CUBICASA APP. MEASUREMENTS DEEMED HIGHLY RELIABLE BUT NOT GUARANTEED.

website: [www.AffinityRealEstate.com](http://www.AffinityRealEstate.com) | email: [info@affinityrealestate.com](mailto:info@affinityrealestate.com) | office: 218-237-3333 | fax: 218-237-3377



**\$349,900**  
 MLS 6570466 Residential  
 516 28th Street  
 Bemidji MN 56601