



MLS 6570570 Residential

\$255,000

1,049 sq ft
3 bedrooms
2 baths

3918 44th Street
Pine River MN 56474

Status: Active

Description:

Discover 35.73 acres of heavily wooded serenity, perfect for a getaway or hunting adventure. Maple Hill, one of the highest points in Cass County at over 1550 ft elevation, offers a rustic cabin with a drilled well and septic system. Additional outbuildings provide extra storage and plenty of room to roam. This property is a hunters dream with a deer stand located down a scenic path ready for use. Also a great location for your winter activities with snowmobile trails close by. This unique property, in the family for over 65 years, is a once-in-a-lifetime opportunity. Don't miss out!

Additional Details:

Year Built	1965
Lot Acres	35.73
Lot Dimensions	1309x1321
Garage Stalls	1
School District	2174
Taxes	\$758
Taxes with Assessments	\$824
Tax Year	2024

Additional Features:

Fuel: Propane **Heat:** Forced Air, Wood Stove

Driving Directions:

371 to County Rd 1 South to County Rd 26 (48th St) follow to 44th St by Maple Hill Lutheran Church turn on to 44th St SW. First Property on left with sign. Please set navigation to go to Maple Hill Lutheran Church this will keep you on blacktop.



Listed By:
Realty Group LLC

Affinity Real Estate Inc. participates in the Regional Multiple Listing Service of Minnesota, Inc Broker Reciprocity (sm) program, allowing us to display other broker's listings on our website. All properties are subject to prior sale, change or withdrawal.



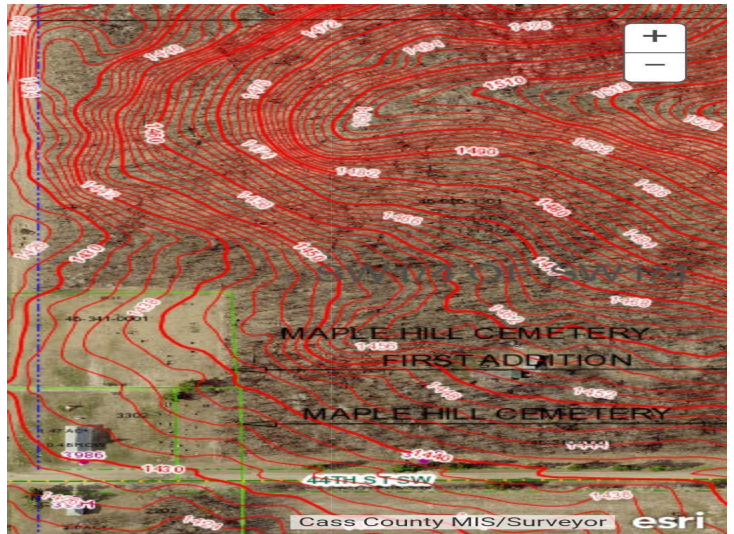
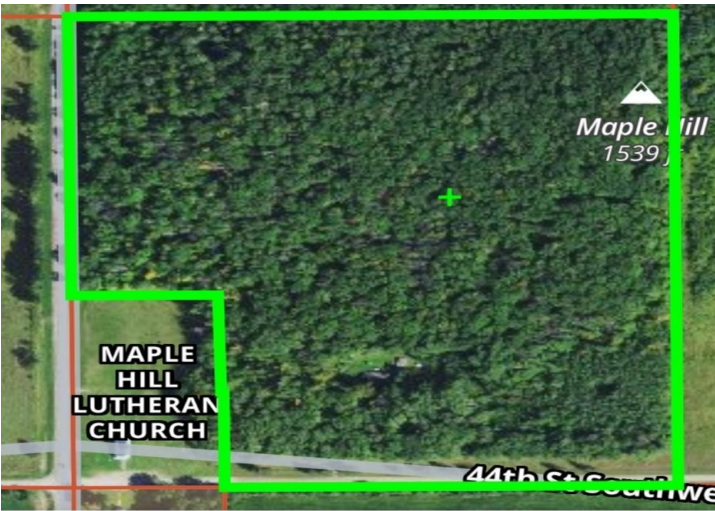
Call Affinity Real Estate

218-237-3333

info@affinityrealestate.com



Affinity Real Estate - 600 Park Avenue South - Park Rapids MN 56470



website: www.AffinityRealEstate.com | email: info@affinityrealestate.com | office: 218-237-3333 | fax: 218-237-3377



\$255,000
 MLS 6570570 Residential
 3918 44th Street
 Pine River MN 56474



website: www.AffinityRealEstate.com | email: info@affinityrealestate.com | office: 218-237-3333 | fax: 218-237-3377

Affinity
REAL ESTATE INC

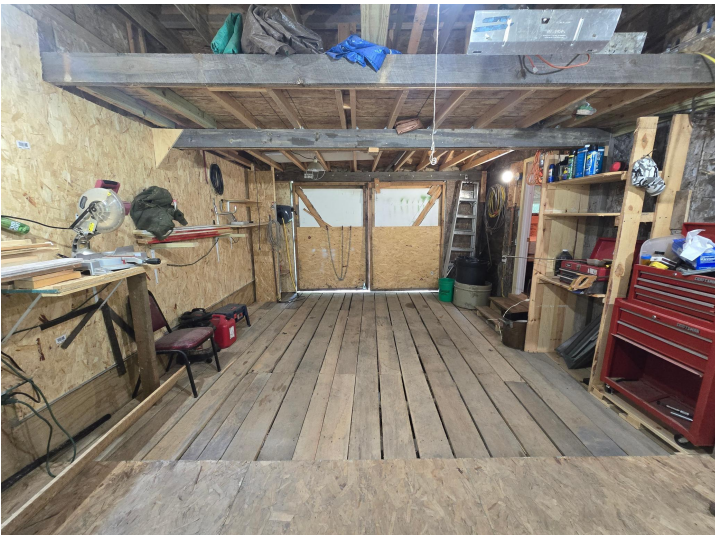
\$255,000
MLS 6570570 Residential
3918 44th Street
Pine River MN 56474



website: www.AffinityRealEstate.com | email: info@affinityrealestate.com | office: 218-237-3333 | fax: 218-237-3377

Affinity
REAL ESTATE INC

\$255,000
MLS 6570570 Residential
3918 44th Street
Pine River MN 56474



website: www.AffinityRealEstate.com | email: info@affinityrealestate.com | office: 218-237-3333 | fax: 218-237-3377

Affinity
REAL ESTATE INC

\$255,000
MLS 6570570 Residential
3918 44th Street
Pine River MN 56474



website: www.AffinityRealEstate.com | email: info@affinityrealestate.com | office: 218-237-3333 | fax: 218-237-3377



\$255,000
 MLS 6570570 Residential
 3918 44th Street
 Pine River MN 56474



website: www.AffinityRealEstate.com | email: info@affinityrealestate.com | office: 218-237-3333 | fax: 218-237-3377

Affinity
REAL ESTATE INC

\$255,000

MLS 6570570 Residential
3918 44th Street
Pine River MN 56474



website: www.AffinityRealEstate.com | email: info@affinityrealestate.com | office: 218-237-3333 | fax: 218-237-3377



\$255,000
MLS 6570570 Residential
3918 44th Street
Pine River MN 56474