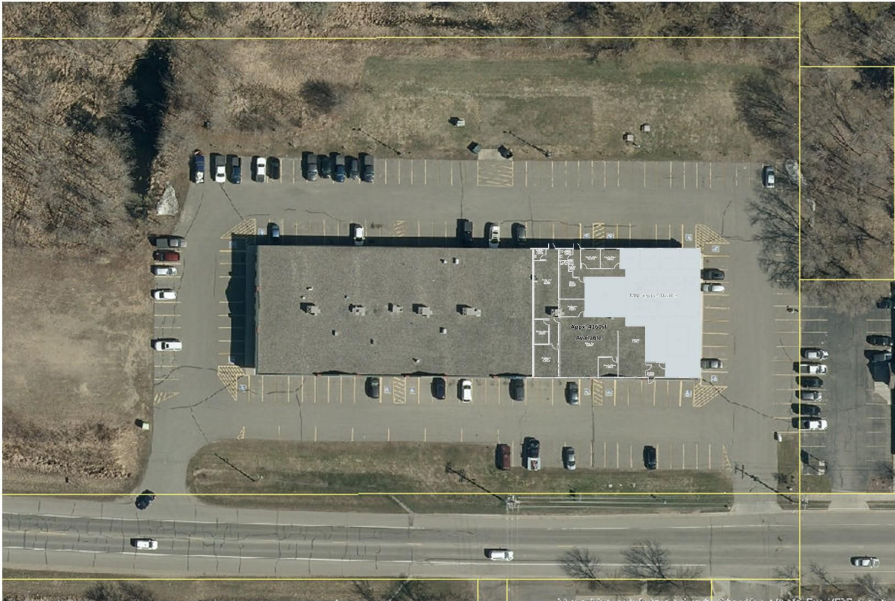




MLS 6571102 Commercial Sale

\$6,940



Description:

Excellent location on 5th Street NW on the Western edge of Downtown Bemidji. Over 4,000sf available with front and back accesses. Abundant parking, with over 180 spaces for the center. Gross rent includes taxes, CAM, and utilities.

Additional Details:

Year Built	2005
Lot Acres	4.38
Lot Dimensions	320x600
School District	31
Taxes	\$36,946
Taxes with Assessments	\$36,946
Tax Year	2024

Additional Features:

Fuel: Natural Gas **Heat:** Forced Air **Sewer:** City Sewer/Connected **Water:** City Water/Connected **Air Conditioning:** Central Air

Driving Directions:

One block West of Post office on 5th Street



Listed By:
Lake-N-Woods Realty, Inc.

Affinity Real Estate Inc. participates in the Regional Multiple Listing Service of Minnesota, Inc Broker Reciprocity (sm) program, allowing us to display other broker's listings on our website. All properties are subject to prior sale, change or withdrawal.



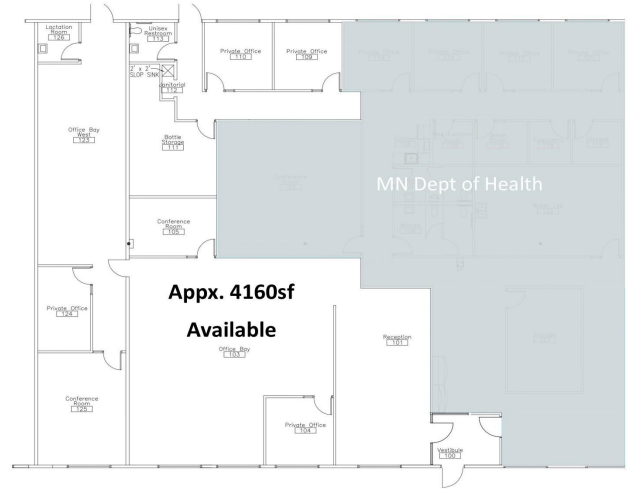
Call Affinity Real Estate

218-237-3333

info@affinityrealestate.com



Affinity Real Estate - 600 Park Avenue South - Park Rapids MN 56470



website: www.AffinityRealEstate.com | email: info@affinityrealestate.com | office: 218-237-3333 | fax:218-237-3377



\$6,940
MLS 6571102 Commercial
Sale
705 5th Street
Bemidji MN 56601