



MLS 6571123 Lake Land

**\$220,000**

**Description:**

Discover your dream retreat with this beautiful 7.1-acre parcel on the serene Little Woman Lake. Boasting 387.71 feet of natural frontage, this property offers direct and easy boating access to the renowned Woman Lake and its entire chain, perfect for endless recreational opportunities including boating, fishing, and swimming. Nestled among a picturesque mix of pines and hardwoods, this land offers a nice building site for your ideal up-north home. Whether you envision a cozy cabin or a lakeside home, this property provides the perfect canvas for your dream. Embrace the tranquility and beauty of Little Woman Lake and create your private haven in this coveted location. Don't miss this rare opportunity to own a piece of paradise with easy access to one of the most sought-after lake chains in the lake country area.

**Additional Details:**

Lot Acres	7.1
Lot Dimensions	Irregular
School District	113
Taxes	\$616
Taxes with Assessments	\$616
Tax Year	2024

**Additional Features:**

**Driving Directions:**

In Hackensack go east on Co 5 9.1 miles to a left on Hillerman Rd NW. Go .3 miles to sign on right.



Listed By:  
Bill Hansen Realty/Walker

Affinity Real Estate Inc. participates in the Regional Multiple Listing Service of Minnesota, Inc Broker Reciprocity (sm) program, allowing us to display other broker's listings on our website. All properties are subject to prior sale, change or withdrawal.



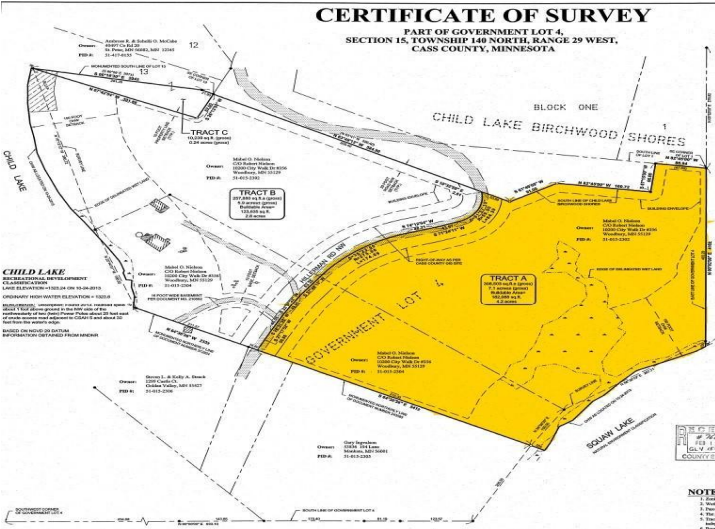
**Call Affinity Real Estate**

**218-237-3333**

**info@affinityrealestate.com**



**Affinity Real Estate - 600 Park Avenue South - Park Rapids MN 56470**



website: [www.AffinityRealEstate.com](http://www.AffinityRealEstate.com) | email: [info@affinityrealestate.com](mailto:info@affinityrealestate.com) | office: 218-237-3333 | fax: 218-237-3377



**\$220,000**  
 MLS 6571123 Lake Land  
 TBD Hillerman Road  
 Hackensack MN 56452



website: [www.AffinityRealEstate.com](http://www.AffinityRealEstate.com) | email: [info@affinityrealestate.com](mailto:info@affinityrealestate.com) | office: 218-237-3333 | fax:218-237-3377



**\$220,000**  
MLS 6571123 Lake Land  
TBD Hillerman Road  
Hackensack MN 56452