



MLS 6571716 Lake Home

\$449,900

2,090 sq ft
2 bedrooms
2 baths

875 County 11
Hackensack MN 56452

Waterfront: IXL

Status: Active

Description:

Welcome to your perfect retreat on the tranquil shores of IXL Lake, an unspoiled environmental haven. Close to the water's edge, you are guaranteed to fall asleep to the sound of waves and nature. Step inside the four-season porch, significant enough for dining, sleeping, or playing games...you get to decide. The living room has beautiful wood floors, a vaulted wood ceiling with beam accents, and large windows overlooking the lake. The main level features two bedrooms and a bathroom. The lucky one in the family can use the lakeside bedroom with beautiful views and its door to the deck. There's additional space upstairs for guests, as well as another bathroom. The kitchen is large and perfect for entertaining. The large lakeside deck is ideal for morning coffee and relaxing at the shoreline. With its southern exposure, you will have warm, sunny days, beautiful sunrises, and sunsets gleaming across the water. The lower level features a lounge area, washer and dryer, ample storage, and a convenient, no-elevation walk-out to the lake. IXL Lake is perfect for fishing, offering crappie, northern, and bass. The lake's privacy is enhanced by the absence of a public boat launch, ensuring an environment of like-minded patrons.

Additional Details:


Year Built	1974
Lot Acres	0.42
Lot Dimensions	120x150x119x160
Garage Stalls	1
School District	113
Taxes	\$2,052
Taxes with Assessments	\$2,052
Tax Year	2024

Additional Features:

Basement: Block, Partially Finished, Walkout **Fuel:** Electric, Propane **Garage:** 1 **Heat:** Baseboard, Ductless Mini-Split, Forced Air **Sewer:** Mound Septic **Water:** Submersible - 4 Inch **Air Conditioning:** Ductless Mini-Split

Driving Directions:

From Longville - Head S on Hwy 84 for 6.3 miles. Turn right onto County 11 NW for 2.7 miles to the subject property.



Listed By:
Heartland Real Estate

Affinity Real Estate Inc. participates in the Regional Multiple Listing Service of Minnesota, Inc Broker Reciprocity (sm) program, allowing us to display other broker's listings on our website. All properties are subject to prior sale, change or withdrawal.



Call Affinity Real Estate
218-237-3333
info@affinityrealestate.com



Affinity Real Estate - 600 Park Avenue South - Park Rapids MN 56470



website: www.AffinityRealEstate.com | email: info@affinityrealestate.com | office: 218-237-3333 | fax:218-237-3377



\$449,900
MLS 6571716 Lake Home
875 County 11
Hackensack MN 56452



website: www.AffinityRealEstate.com | email: info@affinityrealestate.com | office: 218-237-3333 | fax: 218-237-3377

Affinity
REAL ESTATE INC

\$449,900
MLS 6571716 Lake Home
875 County 11
Hackensack MN 56452



website: www.AffinityRealEstate.com | email: info@affinityrealestate.com | office: 218-237-3333 | fax: 218-237-3377

Affinity
REAL ESTATE INC

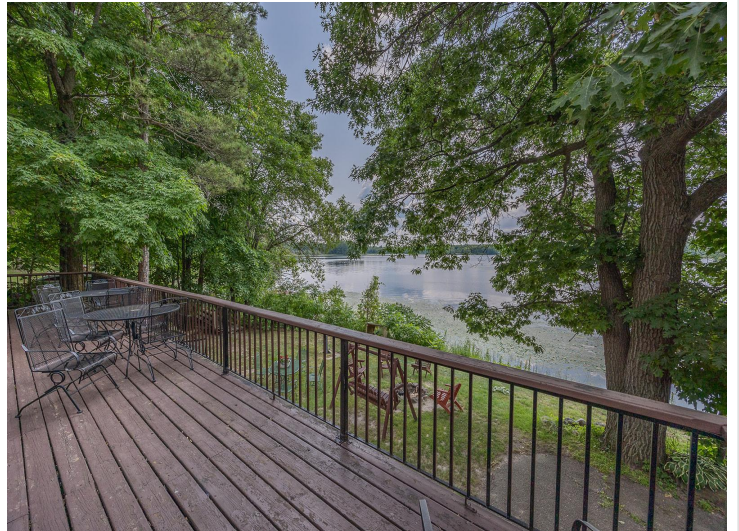
\$449,900
MLS 6571716 Lake Home
875 County 11
Hackensack MN 56452



website: www.AffinityRealEstate.com | email: info@affinityrealestate.com | office: 218-237-3333 | fax: 218-237-3377

Affinity
REAL ESTATE INC

\$449,900
MLS 6571716 Lake Home
875 County 11
Hackensack MN 56452



website: www.AffinityRealEstate.com | email: info@affinityrealestate.com | office: 218-237-3333 | fax:218-237-3377



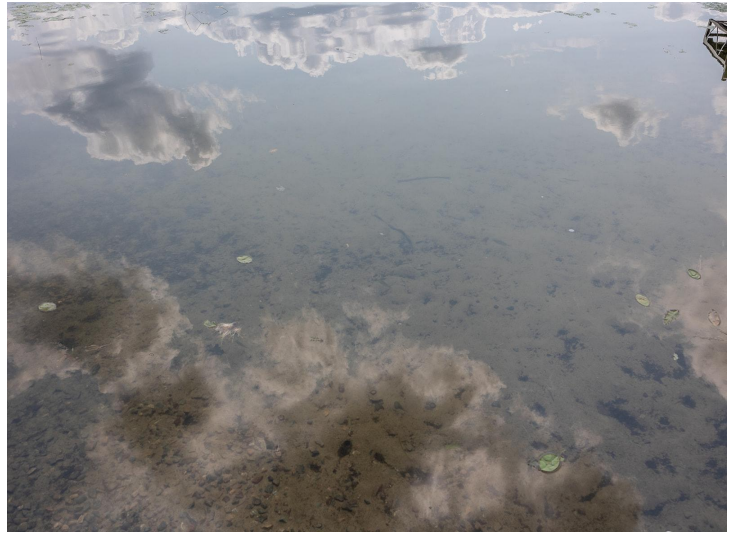
\$449,900
MLS 6571716 Lake Home
875 County 11
Hackensack MN 56452



website: www.AffinityRealEstate.com | email: info@affinityrealestate.com | office: 218-237-3333 | fax:218-237-3377

Affinity
REAL ESTATE INC

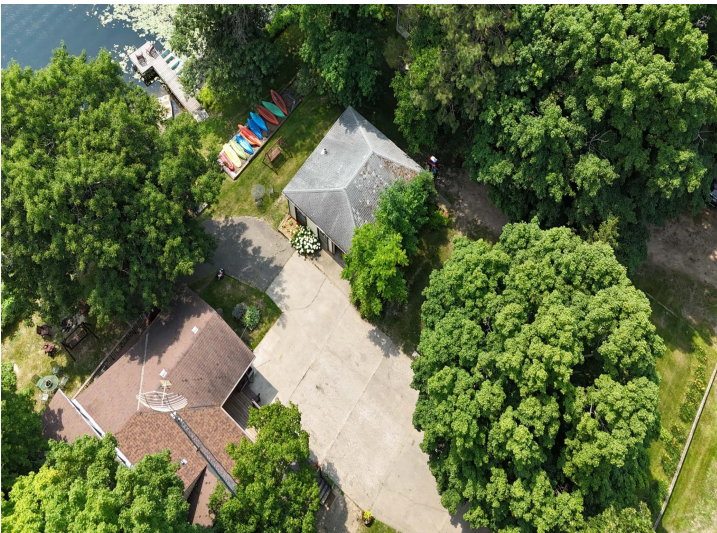
\$449,900
MLS 6571716 Lake Home
875 County 11
Hackensack MN 56452



website: www.AffinityRealEstate.com | email: info@affinityrealestate.com | office: 218-237-3333 | fax:218-237-3377



\$449,900
MLS 6571716 Lake Home
875 County 11
Hackensack MN 56452



website: www.AffinityRealEstate.com | email: info@affinityrealestate.com | office: 218-237-3333 | fax: 218-237-3377

Affinity
REAL ESTATE INC

\$449,900
MLS 6571716 Lake Home
875 County 11
Hackensack MN 56452



FLOOR PLAN CREATED BY CUBICASA APP; MEASUREMENTS DEEMED HIGHLY RELIABLE BUT NOT GUARANTEED.

website: www.AffinityRealEstate.com | email: info@affinityrealestate.com | office: 218-237-3333 | fax: 218-237-3377



\$449,900
MLS 6571716 Lake Home
875 County 11
Hackensack MN 56452