



MLS 6571727 Lake Home

\$799,900

2,133 sq ft
2 bedrooms
3 baths

1388 Little Deep Lake Drive
Backus MN 56435

Waterfront: Little Deep Lake (Ponto
Lake Twp.)

Status: Active

Description:

Welcome to Paradise with 17 acres and a private lake. This is one the most beautiful properties you can own. The drive in and the lake views are breathtaking. The home is ready for you to move into and features tiled floors, main floor family room and living room, fireplace, skylight, open balcony upstairs that over looks family room and kitchen formal dining room and much more. Outside is a 34 x 40 garage that has a 16 x 24 finished and heated area, 44 x 80 pole building with 3 overhead doors, the back space was set up for horses and a tack room and has a 6' lean along the side. There is a patio facing the lake to relax and enjoy the sunsets, a large barbecue area and tiered levels for gardening. There are water sources throughout the property for maintaining flower beds, lawn and gardens. Beautiful wooded property and a private lake with an abundance of fish. If your looking for a private, peaceful, beautiful property, welcome home!

Additional Details:

Year Built	1980
Lot Acres	17.16
Lot Dimensions	Getting
Garage Stalls	6
School District	2174
Taxes	\$2,244
Taxes with Assessments	\$2,310
Tax Year	2024

Additional Features:

Basement: Full **Fuel:** Propane **Garage:** 6 **Heat:** Boiler, Outdoor Boiler **Sewer:** Private Sewer **Water:** Drilled **Air Conditioning:** Ductless Mini-Split

Driving Directions:

Follow your GPS



Listed By:
Princeton Realty

Affinity Real Estate Inc. participates in the Regional Multiple Listing Service of Minnesota, Inc Broker Reciprocity (sm) program, allowing us to display other broker's listings on our website. All properties are subject to prior sale, change or withdrawal.



Call Affinity Real Estate

218-237-3333

info@affinityrealestate.com



Affinity Real Estate - 600 Park Avenue South - Park Rapids MN 56470



website: www.AffinityRealEstate.com | email: info@affinityrealestate.com | office: 218-237-3333 | fax: 218-237-3377

Affinity
REAL ESTATE INC

\$799,900

MLS 6571727 Lake Home
1388 Little Deep Lake Drive
Backus MN 56435



website: www.AffinityRealEstate.com | email: info@affinityrealestate.com | office: 218-237-3333 | fax: 218-237-3377



\$799,900

MLS 6571727 Lake Home
1388 Little Deep Lake Drive
Backus MN 56435



website: www.AffinityRealEstate.com | email: info@affinityrealestate.com | office: 218-237-3333 | fax: 218-237-3377

Affinity
REAL ESTATE INC

\$799,900

MLS 6571727 Lake Home
1388 Little Deep Lake Drive
Backus MN 56435



website: www.AffinityRealEstate.com | email: info@affinityrealestate.com | office: 218-237-3333 | fax: 218-237-3377

Affinity
REAL ESTATE INC

\$799,900
MLS 6571727 Lake Home
1388 Little Deep Lake Drive
Backus MN 56435



website: www.AffinityRealEstate.com | email: info@affinityrealestate.com | office: 218-237-3333 | fax: 218-237-3377



\$799,900
MLS 6571727 Lake Home
1388 Little Deep Lake Drive
Backus MN 56435



website: www.AffinityRealEstate.com | email: info@affinityrealestate.com | office: 218-237-3333 | fax: 218-237-3377

Affinity
REAL ESTATE INC

\$799,900
MLS 6571727 Lake Home
1388 Little Deep Lake Drive
Backus MN 56435



website: www.AffinityRealEstate.com | email: info@affinityrealestate.com | office: 218-237-3333 | fax: 218-237-3377



\$799,900
 MLS 6571727 Lake Home
 1388 Little Deep Lake Drive
 Backus MN 56435



website: www.AffinityRealEstate.com | email: info@affinityrealestate.com | office: 218-237-3333 | fax: 218-237-3377



\$799,900

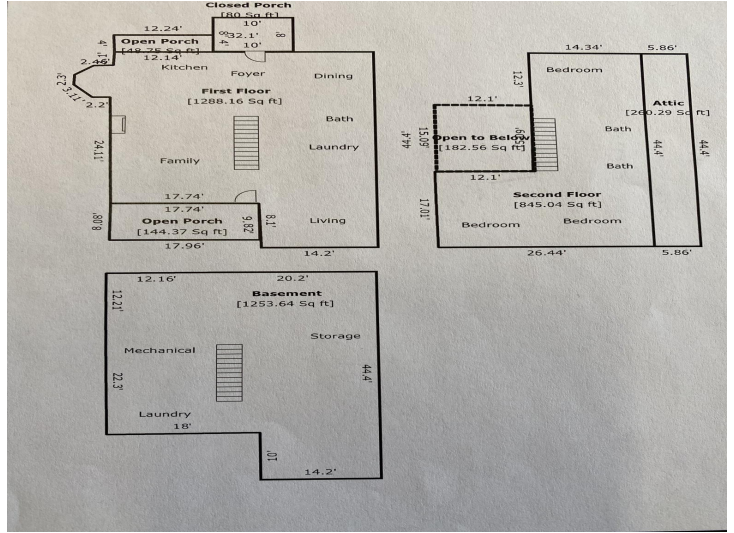
MLS 6571727 Lake Home
1388 Little Deep Lake Drive
Backus MN 56435



website: www.AffinityRealEstate.com | email: info@affinityrealestate.com | office: 218-237-3333 | fax: 218-237-3377



\$799,900
 MLS 6571727 Lake Home
 1388 Little Deep Lake Drive
 Backus MN 56435



website: www.AffinityRealEstate.com | email: info@affinityrealestate.com | office: 218-237-3333 | fax: 218-237-3377



\$799,900

MLS 6571727 Lake Home
1388 Little Deep Lake Drive
Backus MN 56435