



MLS 6572006 Residential

**\$349,900**

2,068 sq ft  
4 bedrooms  
2 baths

24735 Evergreen Drive  
Nevis MN 56467

Status: Active

**Description:**

The buyer's financing fell through just before closing. -- The septic compliance, water test, and title work were all completed when the lender discovered an issue with the buyer's credit. This property is ready to close quickly!

Step inside this beautiful 4 bedroom, 2 bath home nestled on over 3 wooded acres. The home offers a perfect blend of comfort and nature, ensuring privacy and peace in every corner. The home boasts four generously sized bedrooms, along with a cozy loft and an office. The sunroom is a standout feature, providing panoramic views of the lush, wooded setting. It's the ideal spot for enjoying your morning coffee, reading a book, or simply soaking in the calming ambiance of this private setting.

**Additional Details:**

Year Built	2000
Lot Acres	3.31
Lot Dimensions	335x408x434x352
Garage Stalls	2
School District	308
Taxes	\$1,740
Taxes with Assessments	\$1,950
Tax Year	2024

**Additional Features:**

**Basement:** Block **Fuel:** Electric, Propane **Garage:** 2 **Heat:** Baseboard, Ductless Mini-Split, Hot Water, Radiant Floor **Sewer:** Tank with Drainage Field **Water:** Drilled **Air Conditioning:** Ductless Mini-Split, Heat Pump

**Driving Directions:**

From Hwy 71/34 in Park Rapids. East on Hwy 34 to a right onto #33. Right again onto #13. Turn right on Evergreen to the home on your left.



Listed By:  
Coldwell Banker Crown Realtors

Affinity Real Estate Inc. participates in the Regional Multiple Listing Service of Minnesota, Inc Broker Reciprocity (sm) program, allowing us to display other broker's listings on our website. All properties are subject to prior sale, change or withdrawal.



Call Affinity Real Estate

**218-237-3333**

[info@affinityrealestate.com](mailto:info@affinityrealestate.com)



Affinity Real Estate - 600 Park Avenue South - Park Rapids MN 56470



website: [www.AffinityRealEstate.com](http://www.AffinityRealEstate.com) | email: [info@affinityrealestate.com](mailto:info@affinityrealestate.com) | office: 218-237-3333 | fax:218-237-3377

**Affinity**  
REAL ESTATE INC

**\$349,900**  
MLS 6572006 Residential  
24735 Evergreen Drive  
Nevis MN 56467



website: [www.AffinityRealEstate.com](http://www.AffinityRealEstate.com) | email: [info@affinityrealestate.com](mailto:info@affinityrealestate.com) | office: 218-237-3333 | fax:218-237-3377

**Affinity**  
REAL ESTATE INC

**\$349,900**  
MLS 6572006 Residential  
24735 Evergreen Drive  
Nevis MN 56467



website: [www.AffinityRealEstate.com](http://www.AffinityRealEstate.com) | email: [info@affinityrealestate.com](mailto:info@affinityrealestate.com) | office: 218-237-3333 | fax:218-237-3377

**Affinity**  
REAL ESTATE INC

**\$349,900**  
MLS 6572006 Residential  
24735 Evergreen Drive  
Nevis MN 56467



website: [www.AffinityRealEstate.com](http://www.AffinityRealEstate.com) | email: [info@affinityrealestate.com](mailto:info@affinityrealestate.com) | office: 218-237-3333 | fax: 218-237-3377

**Affinity**  
REAL ESTATE INC

**\$349,900**  
MLS 6572006 Residential  
24735 Evergreen Drive  
Nevis MN 56467



website: [www.AffinityRealEstate.com](http://www.AffinityRealEstate.com) | email: [info@affinityrealestate.com](mailto:info@affinityrealestate.com) | office: 218-237-3333 | fax: 218-237-3377

**Affinity**  
REAL ESTATE INC

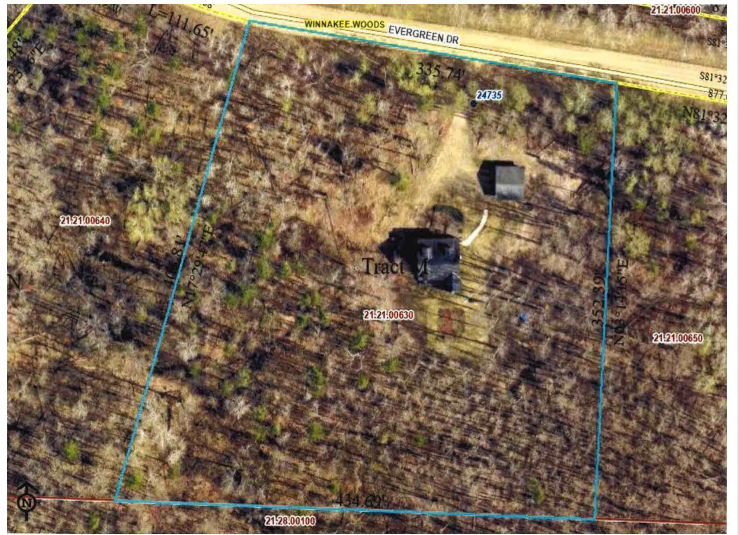
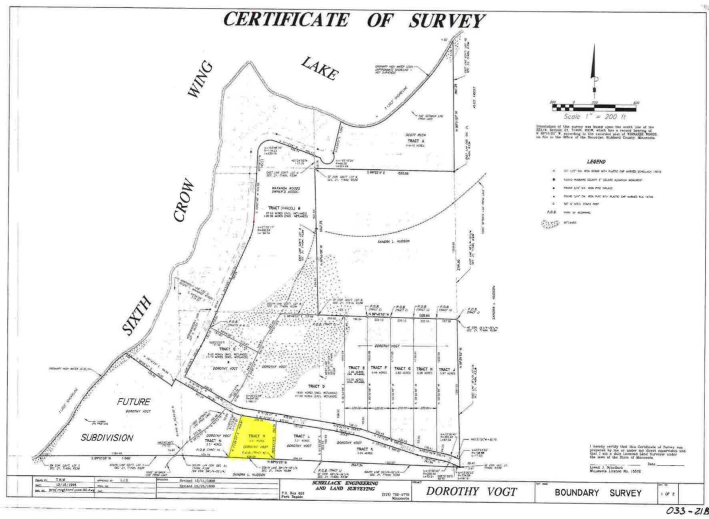
**\$349,900**  
MLS 6572006 Residential  
24735 Evergreen Drive  
Nevis MN 56467



website: [www.AffinityRealEstate.com](http://www.AffinityRealEstate.com) | email: [info@affinityrealestate.com](mailto:info@affinityrealestate.com) | office: 218-237-3333 | fax:218-237-3377



**\$349,900**  
MLS 6572006 Residential  
24735 Evergreen Drive  
Nevis MN 56467



website: [www.AffinityRealEstate.com](http://www.AffinityRealEstate.com) | email: [info@affinityrealestate.com](mailto:info@affinityrealestate.com) | office: 218-237-3333 | fax: 218-237-3377

**Affinity**  
REAL ESTATE INC

**\$349,900**  
MLS 6572006 Residential  
24735 Evergreen Drive  
Nevis MN 56467