



MLS 6572688 Residential

\$109,000

672 sq ft
1 bedrooms
1 baths

1317 2nd Street
Bemidji MN 56601

Status: Active

Description:

(description unavailable)

Additional Details:

Year Built	1945
Lot Acres	0.16
Lot Dimensions	60x115
School District	31
Taxes	\$910
Taxes with Assessments	\$910
Tax Year	2024

Additional Features:

Basement: Block **Fuel:** Natural Gas **Heat:** Forced Air **Sewer:** City Sewer/Connected **Water:** City Water/Connected **Air Conditioning:** None

Driving Directions:

From First St East turn South on Grant then East on 2nd St to property on North side of road



Listed By:
Rogue Real Estate Co.

Affinity Real Estate Inc. participates in the Regional Multiple Listing Service of Minnesota, Inc Broker Reciprocity (sm) program, allowing us to display other broker's listings on our website. All properties are subject to prior sale, change or withdrawal.



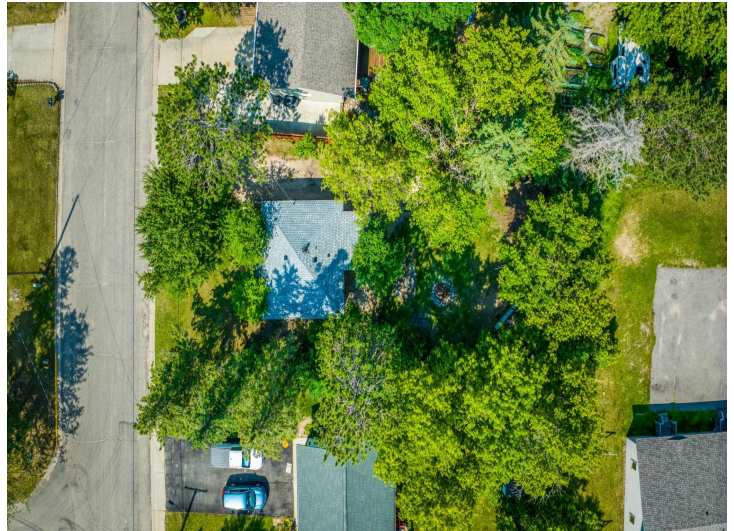
Call Affinity Real Estate

218-237-3333

info@affinityrealestate.com



Affinity Real Estate - 600 Park Avenue South - Park Rapids MN 56470



website: www.AffinityRealEstate.com | email: info@affinityrealestate.com | office: 218-237-3333 | fax:218-237-3377



\$109,000
MLS 6572688 Residential
1317 2nd Street
Bemidji MN 56601



website: www.AffinityRealEstate.com | email: info@affinityrealestate.com | office: 218-237-3333 | fax:218-237-3377



\$109,000
MLS 6572688 Residential
1317 2nd Street
Bemidji MN 56601



website: www.AffinityRealEstate.com | email: info@affinityrealestate.com | office: 218-237-3333 | fax:218-237-3377

Affinity
REAL ESTATE INC

\$109,000
MLS 6572688 Residential
1317 2nd Street
Bemidji MN 56601



website: www.AffinityRealEstate.com | email: info@affinityrealestate.com | office: 218-237-3333 | fax:218-237-3377



\$109,000
MLS 6572688 Residential
1317 2nd Street
Bemidji MN 56601



website: www.AffinityRealEstate.com | email: info@affinityrealestate.com | office: 218-237-3333 | fax:218-237-3377

Affinity
REAL ESTATE INC

\$109,000
MLS 6572688 Residential
1317 2nd Street
Bemidji MN 56601



website: www.AffinityRealEstate.com | email: info@affinityrealestate.com | office: 218-237-3333 | fax: 218-237-3377

Affinity
REAL ESTATE INC

\$109,000
MLS 6572688 Residential
1317 2nd Street
Bemidji MN 56601



website: www.AffinityRealEstate.com | email: info@affinityrealestate.com | office: 218-237-3333 | fax:218-237-3377

Affinity
REAL ESTATE INC

\$109,000
MLS 6572688 Residential
1317 2nd Street
Bemidji MN 56601



website: www.AffinityRealEstate.com | email: info@affinityrealestate.com | office: 218-237-3333 | fax:218-237-3377

Affinity
REAL ESTATE INC

\$109,000
MLS 6572688 Residential
1317 2nd Street
Bemidji MN 56601



website: www.AffinityRealEstate.com | email: info@affinityrealestate.com | office: 218-237-3333 | fax:218-237-3377



\$109,000
MLS 6572688 Residential
1317 2nd Street
Bemidji MN 56601