



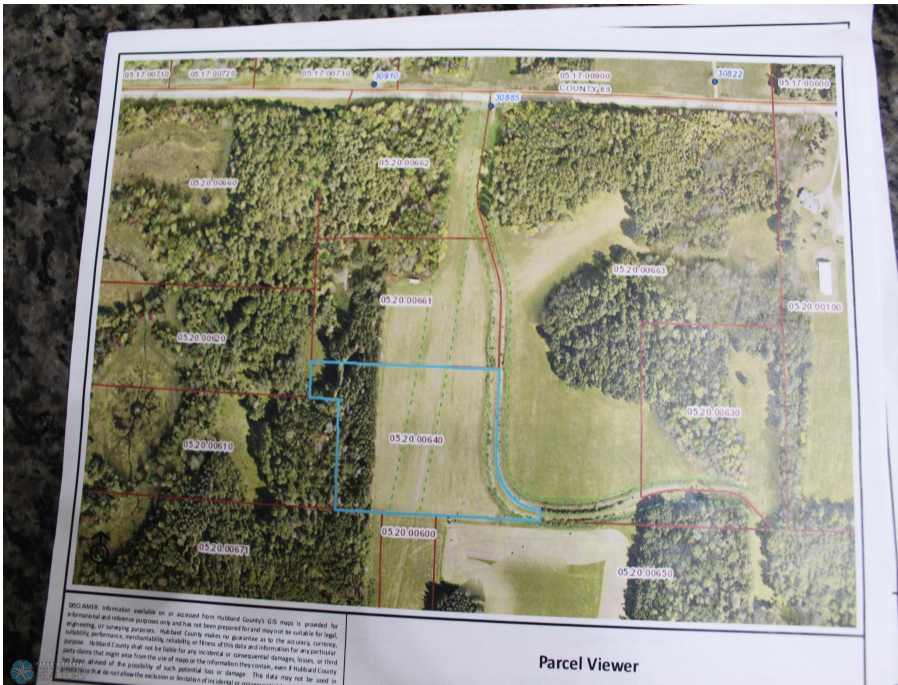
MLS 6573003 Land

\$50,000

5.85 Acres
Raw Land

30881 County 89
Park Rapids MN 56470

Status: Active



Description:

Seller says make a reasonable offer! Large lot to trees plant fruit trees, gardens, put in permanent home or have a camper retreat. Beautiful pine trees on West side. Very Private.

Additional Details:

Lot Acres	5.85
Lot Dimensions	447
School District	309
Taxes	\$146
Taxes with Assessments	\$146
Tax Year	2024

Additional Features:

Driving Directions:

Hwy 71 North of Park Rapids



Listed By:
eXp Realty (3523 FGO)

Affinity Real Estate Inc. participates in the Regional Multiple Listing Service of Minnesota, Inc Broker Reciprocity (sm) program, allowing us to display other broker's listings on our website. All properties are subject to prior sale, change or withdrawal.



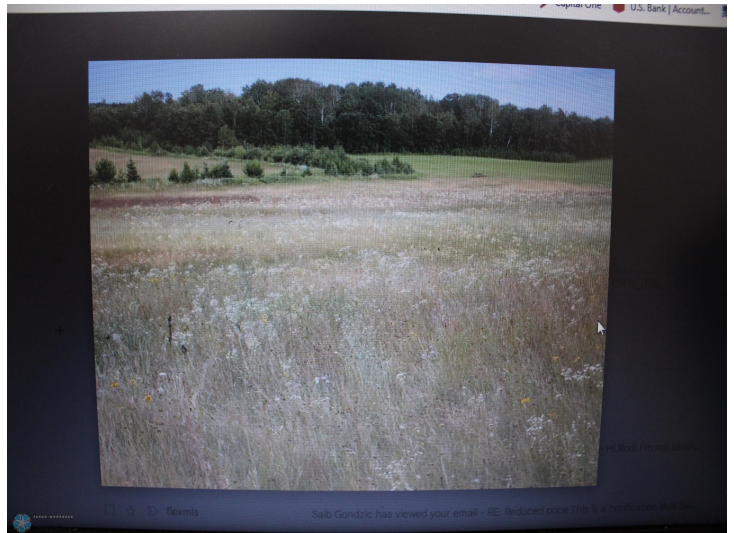
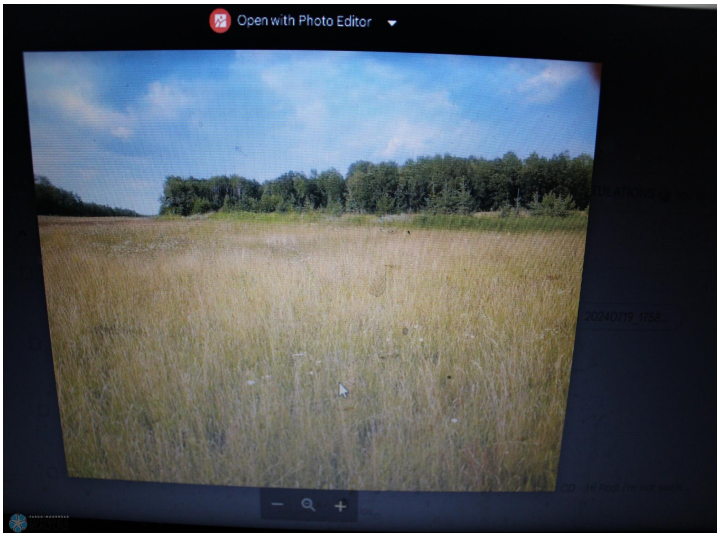
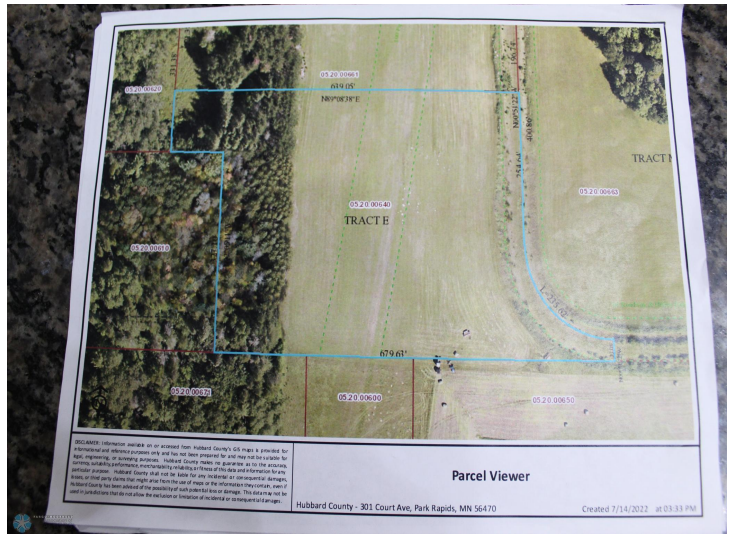
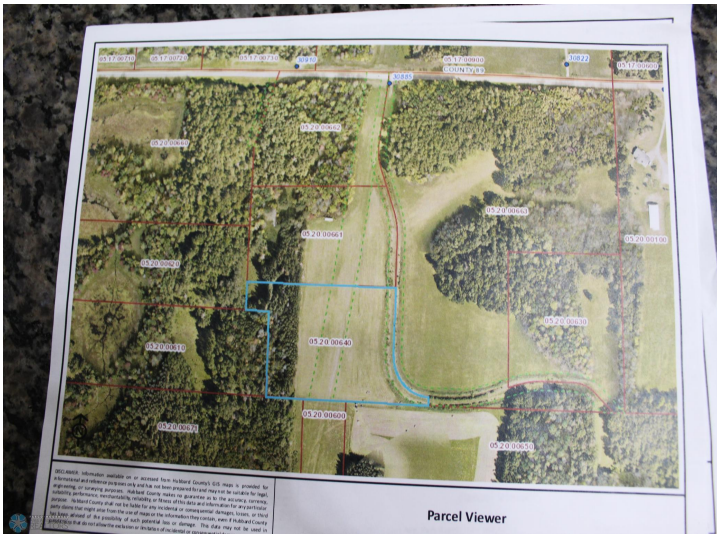
Call Affinity Real Estate

218-237-3333

info@affinityrealestate.com



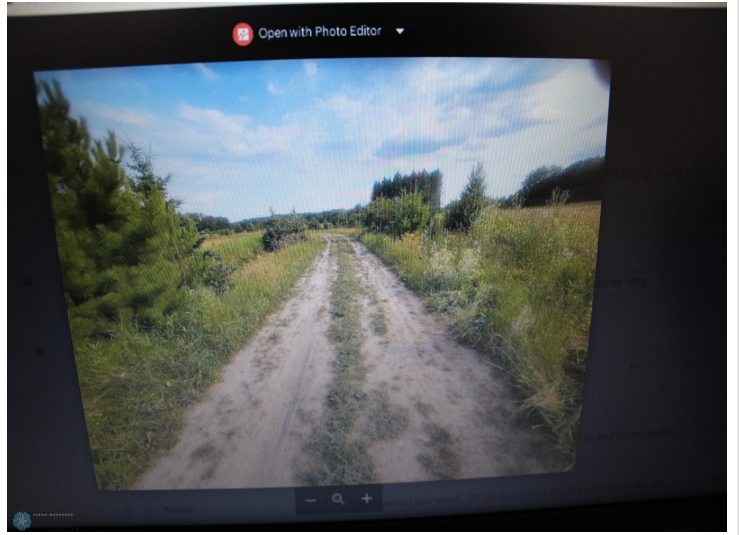
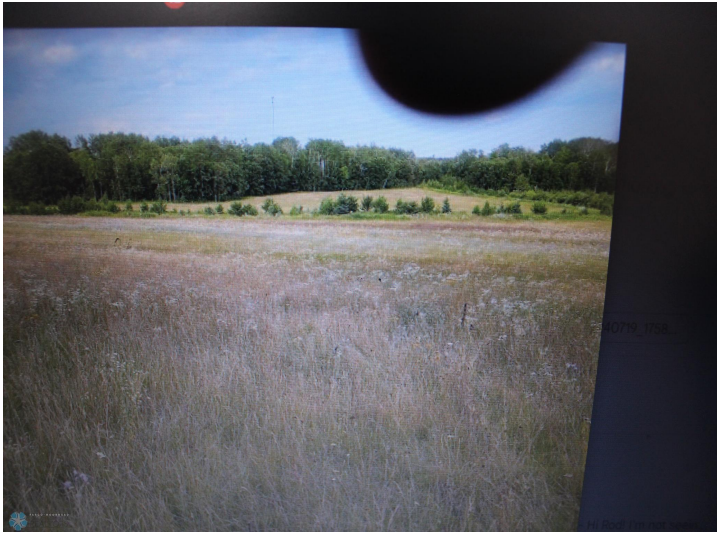
Affinity Real Estate - 600 Park Avenue South - Park Rapids MN 56470



website: www.AffinityRealEstate.com | email: info@affinityrealestate.com | office: 218-237-3333 | fax: 218-237-3377

Affinity
REAL ESTATE INC

\$50,000
MLS 6573003 Land
30881 County 89
Park Rapids MN 56470



website: www.AffinityRealEstate.com | email: info@affinityrealestate.com | office: 218-237-3333 | fax:218-237-3377



\$50,000
MLS 6573003 Land
30881 County 89
Park Rapids MN 56470