



MLS 6573351 Residential

**\$136,500**

1,651 sq ft  
3 bedrooms  
3 baths

104 Gordon Lane  
Bagley MN 56621

Status: Active

**Description:**

Charming 3-bedroom, 2.5 bathroom Bagley city home. This move in ready property is situated on a large corner lot with a private fenced in back yard. Property includes a main level bedroom, bathroom and office space. The upper level includes 2 bedrooms and a large bathroom with a dual sink vanity. Lower level includes a walkout door that leads to the fenced in yard, half bathroom, laundry, and an egress window for a possibility of a 4th bedroom. Recent updates include fresh paint, flooring, bathroom updates, newer furnace, and water softener. Schedule your showing today.

**Additional Details:**

Year Built	1920
Lot Acres	0.53
Lot Dimensions	.53 acres
Garage Stalls	1
School District	2311
Taxes	\$1,058
Taxes with Assessments	\$1,128
Tax Year	2024

**Additional Features:**

**Basement:** Block, Egress Window(s), Unfinished, Walkout **Fuel:** Natural Gas **Garage:** 1 **Heat:** Forced Air **Sewer:** City Sewer/Connected  
**Water:** City Water/Connected **Air Conditioning:** Window Unit(s)

**Driving Directions:**

Take Hwy 2 East, turn left onto Getchell Ave NE, take a right onto Gordon Lane NE. Property will be on your right.



Listed By:  
eXp Realty

Affinity Real Estate Inc. participates in the Regional Multiple Listing Service of Minnesota, Inc Broker Reciprocity (sm) program, allowing us to display other broker's listings on our website. All properties are subject to prior sale, change or withdrawal.



**Call Affinity Real Estate**

**218-237-3333**

**info@affinityrealestate.com**



**Affinity Real Estate - 600 Park Avenue South - Park Rapids MN 56470**





website: [www.AffinityRealEstate.com](http://www.AffinityRealEstate.com) | email: [info@affinityrealestate.com](mailto:info@affinityrealestate.com) | office: 218-237-3333 | fax: 218-237-3377

**Affinity**  
REAL ESTATE INC

**\$136,500**  
MLS 6573351 Residential  
104 Gordon Lane  
Bagley MN 56621





website: [www.AffinityRealEstate.com](http://www.AffinityRealEstate.com) | email: [info@affinityrealestate.com](mailto:info@affinityrealestate.com) | office: 218-237-3333 | fax: 218-237-3377



**\$136,500**  
 MLS 6573351 Residential  
 104 Gordon Lane  
 Bagley MN 56621





website: [www.AffinityRealEstate.com](http://www.AffinityRealEstate.com) | email: [info@affinityrealestate.com](mailto:info@affinityrealestate.com) | office: 218-237-3333 | fax: 218-237-3377



**\$136,500**  
MLS 6573351 Residential  
104 Gordon Lane  
Bagley MN 56621



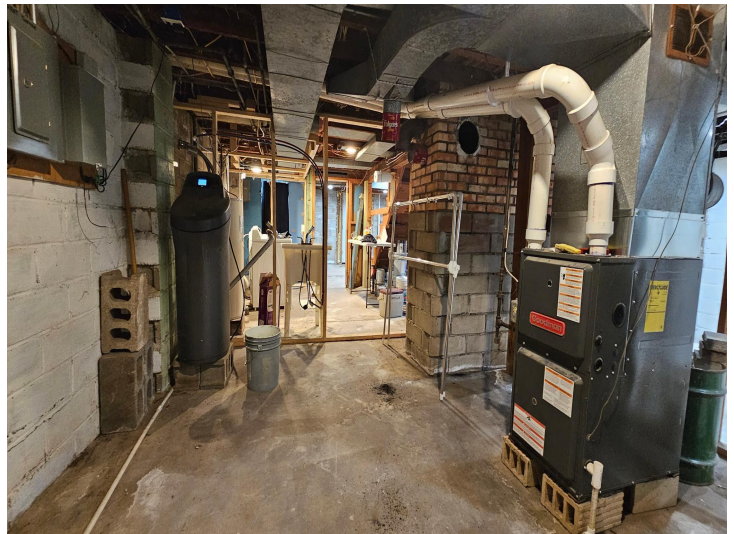
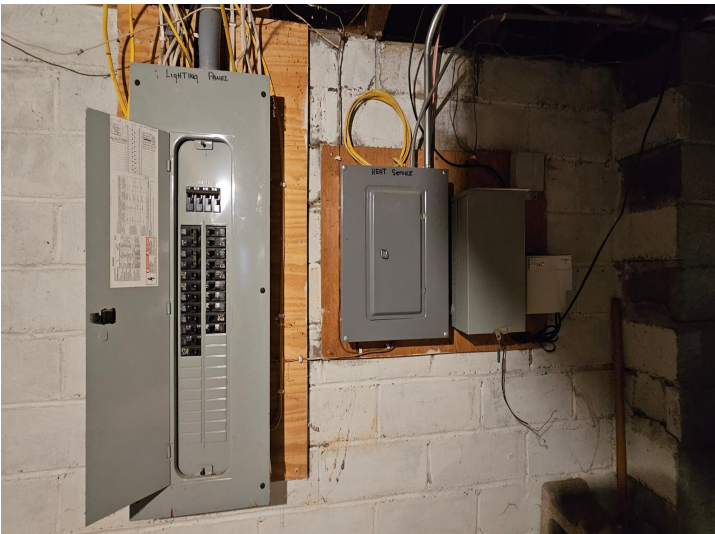


website: [www.AffinityRealEstate.com](http://www.AffinityRealEstate.com) | email: [info@affinityrealestate.com](mailto:info@affinityrealestate.com) | office: 218-237-3333 | fax: 218-237-3377



**\$136,500**  
 MLS 6573351 Residential  
 104 Gordon Lane  
 Bagley MN 56621





website: [www.AffinityRealEstate.com](http://www.AffinityRealEstate.com) | email: [info@affinityrealestate.com](mailto:info@affinityrealestate.com) | office: 218-237-3333 | fax: 218-237-3377

**Affinity**  
REAL ESTATE INC

**\$136,500**  
MLS 6573351 Residential  
104 Gordon Lane  
Bagley MN 56621





website: [www.AffinityRealEstate.com](http://www.AffinityRealEstate.com) | email: [info@affinityrealestate.com](mailto:info@affinityrealestate.com) | office: 218-237-3333 | fax:218-237-3377



**\$136,500**  
MLS 6573351 Residential  
104 Gordon Lane  
Bagley MN 56621