



MLS 6573580 Commercial Sale

**\$950,000**



**Description:**

Build your next multi-family complex right here on this 2+ acre property Zoned R-6 (Multi-Family)! This property is currently surrounded by several apartment complexes and begs for a new owner to do the same!

**Additional Details:**

Year Built	1956
Lot Acres	2.4
Lot Dimensions	160x630
Garage Stalls	2
School District	31
Taxes	\$2,485
Taxes with Assessments	\$3,362
Tax Year	2024

**Additional Features:**

**Fuel:** Natural Gas **Garage:** 2 **Heat:** Forced Air **Sewer:** Private Sewer **Water:** Well **Air Conditioning:** Central Air

**Driving Directions:**

North on Irvine Ave, left on 15th St, right on Norton Ave, #1907 on the left.



Listed By:  
CENTURY 21 Dickinson Realtors

Affinity Real Estate Inc. participates in the Regional Multiple Listing Service of Minnesota, Inc Broker Reciprocity (sm) program, allowing us to display other broker's listings on our website. All properties are subject to prior sale, change or withdrawal.



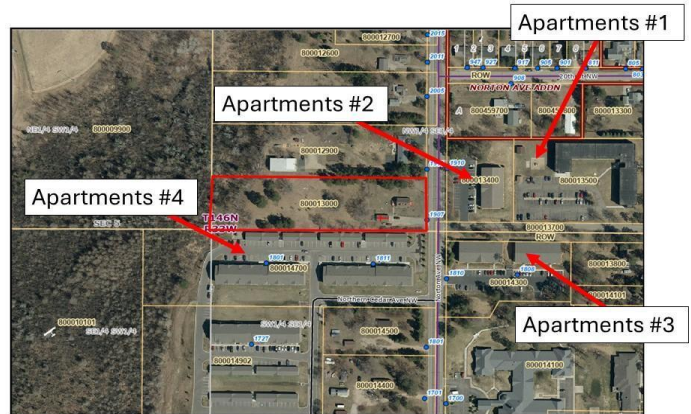
**Call Affinity Real Estate**

**218-237-3333**

**info@affinityrealestate.com**



**Affinity Real Estate - 600 Park Avenue South - Park Rapids MN 56470**



**This Property Is Surrounded By Apartments.**



website: [www.AffinityRealEstate.com](http://www.AffinityRealEstate.com) | email: [info@affinityrealestate.com](mailto:info@affinityrealestate.com) | office: 218-237-3333 | fax: 218-237-3377



**\$950,000**  
MLS 6573580 Commercial  
Sale  
1907 Norton Avenue  
Bemidji MN 56601



**Property Is Commercially Zoned For R-6 (Multi-Family).**



website: [www.AffinityRealEstate.com](http://www.AffinityRealEstate.com) | email: [info@affinityrealestate.com](mailto:info@affinityrealestate.com) | office: 218-237-3333 | fax:218-237-3377



**\$950,000**  
MLS 6573580 Commercial  
Sale  
1907 Norton Avenue  
Bemidji MN 56601