



MLS 6573938 Residential

\$685,840

3,422 sq ft
3 bedrooms
3 baths

4528 Jackpine Road
Bemidji MN 56601

Status: Active



Description:

This custom-built 3+BR/3BA 2 story home and its manicured 5 acres is a must see! This unbelievable home features approximately 3800 sq ft of living space! Large custom kitchen with custom cabinets, Silestone counters, stainless steel appliances & large center island. Living room features 2 story vaulted ceiling and wonderful gas fireplace. Spacious primary suite includes vaulted ceilings, walk-in closet, large bath with Jacuzzi tub and shower. Custom cabinets in bathrooms and laundry. Upper level has a huge family room over the garage as well as 2 additional bedrooms & a full bath. Attached heated 3 stall garage is perfectly finished. 32x60 heated shop along with its man cave is reason enough to come look at this dream property. Beautiful yard includes a patio set up for entertaining guests and also a basketball court. If you're looking for the complete package only a few short miles northwest of Bemidji - this is it!

Additional Details:

Year Built	2004
Lot Acres	5
Lot Dimensions	TBD
Garage Stalls	5
School District	31
Taxes	\$6,860
Taxes with Assessments	\$6,860
Tax Year	2024

Additional Features:

Basement: None **Fuel:** Electric, Propane, Wood **Garage:** 5 **Heat:** Dual, Forced Air, Fireplace(s), Heat Pump, Radiant Floor, Outdoor Boiler **Sewer:** Private Sewer, Tank with Drainage Field **Water:** Submersible - 4 Inch, Private, Well **Air Conditioning:** Heat Pump

Driving Directions:

West on Hwy 2, right on County 9 (Cardinal Rd) 3.5 miles, right on Jackpine Rd.



Listed By:
CENTURY 21 Dickinson Realtors

Affinity Real Estate Inc. participates in the Regional Multiple Listing Service of Minnesota, Inc Broker Reciprocity (sm) program, allowing us to display other broker's listings on our website. All properties are subject to prior sale, change or withdrawal.



Call Affinity Real Estate

218-237-3333

info@affinityrealestate.com



Affinity Real Estate - 600 Park Avenue South - Park Rapids MN 56470



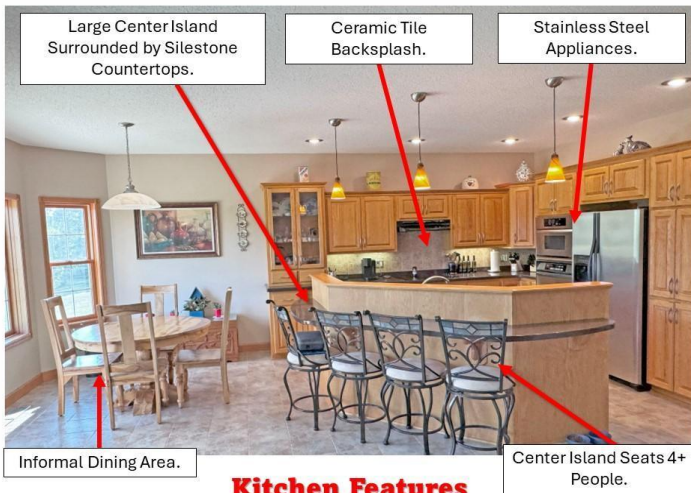
The Outdoor Patio Is Wired For Future Gazebo!



website: www.AffinityRealEstate.com | email: info@affinityrealestate.com | office: 218-237-3333 | fax:218-237-3377



\$685,840
MLS 6573938 Residential
4528 Jackpine Road
Bemidji MN 56601



Large Center Island Surrounded by Silestone Countertops.

Ceramic Tile Backsplash.

Stainless Steel Appliances.

Informal Dining Area.

Center Island Seats 4+ People.

Kitchen Features



website: www.AffinityRealEstate.com | email: info@affinityrealestate.com | office: 218-237-3333 | fax:218-237-3377



\$685,840
 MLS 6573938 Residential
 4528 Jackpine Road
 Bemidji MN 56601



Black Granite Entryway!



website: www.AffinityRealEstate.com | email: info@affinityrealestate.com | office: 218-237-3333 | fax:218-237-3377



\$685,840
MLS 6573938 Residential
4528 Jackpine Road
Bemidji MN 56601



website: www.AffinityRealEstate.com | email: info@affinityrealestate.com | office: 218-237-3333 | fax: 218-237-3377



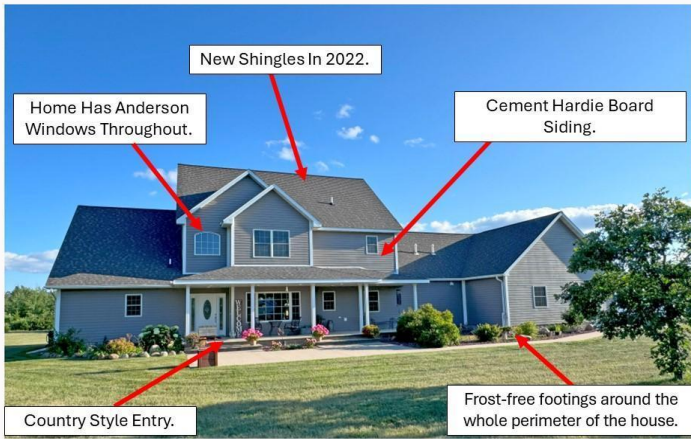
\$685,840
MLS 6573938 Residential
4528 Jackpine Road
Bemidji MN 56601



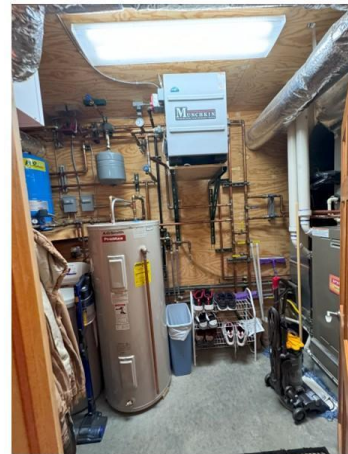
website: www.AffinityRealEstate.com | email: info@affinityrealestate.com | office: 218-237-3333 | fax:218-237-3377

Affinity
REAL ESTATE INC

\$685,840
MLS 6573938 Residential
4528 Jackpine Road
Bemidji MN 56601



Home Exterior Features



Propane & Wood Boiler For In- Floor Heat.

Forced Air Furnace

Heat Pump/AC

Air Exchanger

Home HVAC System Includes



Owner Has Planted 100s Of Trees Throughout The Years!

website: www.AffinityRealEstate.com | email: info@affinityrealestate.com | office: 218-237-3333 | fax:218-237-3377

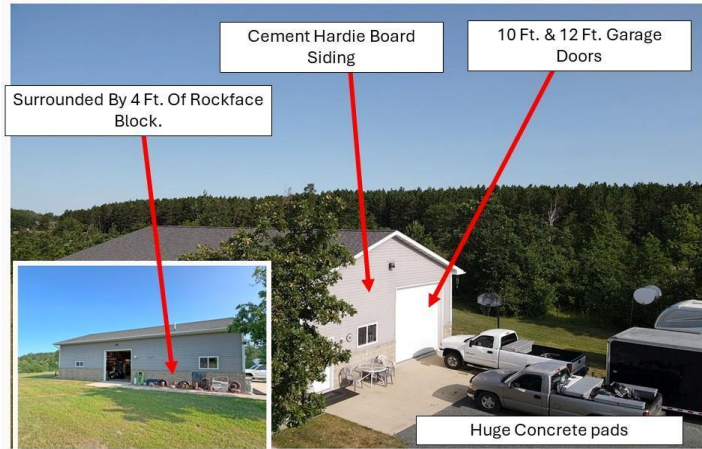
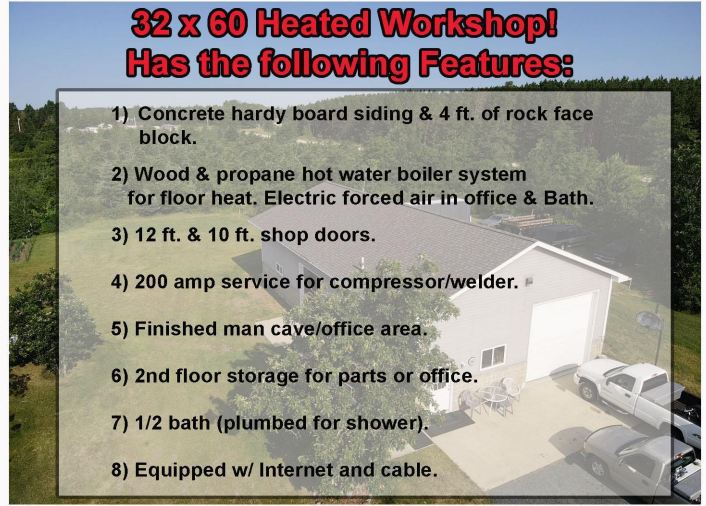


\$685,840
 MLS 6573938 Residential
 4528 Jackpine Road
 Bemidji MN 56601

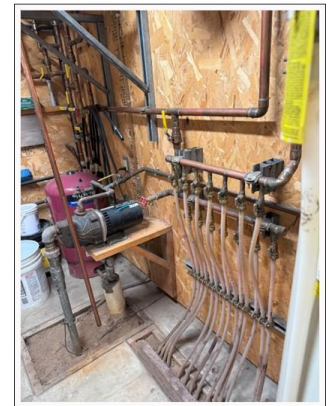
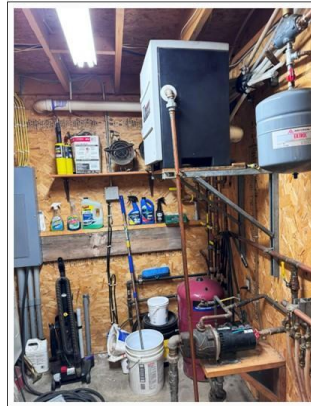


32 x 60 Heated Workshop! Has the following Features:

- 1) Concrete hardy board siding & 4 ft. of rock face block.
- 2) Wood & propane hot water boiler system for floor heat. Electric forced air in office & Bath.
- 3) 12 ft. & 10 ft. shop doors.
- 4) 200 amp service for compressor/welder.
- 5) Finished man cave/office area.
- 6) 2nd floor storage for parts or office.
- 7) 1/2 bath (plumbed for shower).
- 8) Equipped w/ Internet and cable.



The shop has wood & propane boilers for in-floor heat!



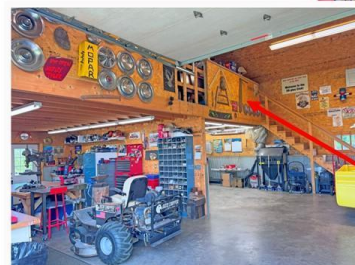
Shop Exterior Features



- The shop has a Wood & Propane Hot Water Boiler System For In-Floor Heating System.
- Wired W/ 200 Amp Service.
- Internet & Fiberoptic Lines
- ½ Bath W/ Shower Plumbed In.
- Second Floor Storage Area.
- Finished Man Cave / Office.

Shop Interior Features

10 x 12 Up-stairs Office Over Man Cave.



20 x 32 Up-Stairs Parts Storage.

2nd Floor Storage / Office Space.

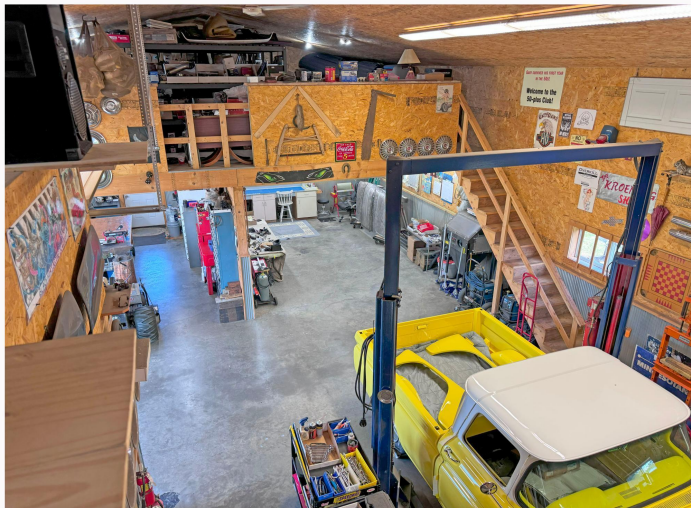
website: www.AffinityRealEstate.com | email: info@affinityrealestate.com | office: 218-237-3333 | fax: 218-237-3377



\$685,840
MLS 6573938 Residential
4528 Jackpine Road
Bemidji MN 56601



Wood Boiler Heats Both The House & Shop!



website: www.AffinityRealEstate.com | email: info@affinityrealestate.com | office: 218-237-3333 | fax:218-237-3377



\$685,840
 MLS 6573938 Residential
 4528 Jackpine Road
 Bemidji MN 56601



website: www.AffinityRealEstate.com | email: info@affinityrealestate.com | office: 218-237-3333 | fax: 218-237-3377

Affinity
REAL ESTATE INC

\$685,840
MLS 6573938 Residential
4528 Jackpine Road
Bemidji MN 56601



website: www.AffinityRealEstate.com | email: info@affinityrealestate.com | office: 218-237-3333 | fax:218-237-3377



\$685,840
MLS 6573938 Residential
4528 Jackpine Road
Bemidji MN 56601