



MLS 6574337 Lake Land

\$200,000

Description:

Convenient to Longville and Walker, this hard to find, south shore lot has been cleared and is ready for your building plans. Cass Co has marked set backs and the site evaluation has been completed. This property gives you gorgeous views over Leech Lake with a hard bottom shoreline.

Additional Details:

Lot Acres	0.42
Lot Dimensions	158 x irreg
School District	113
Taxes	\$752
Taxes with Assessments	\$752
Tax Year	2024

Additional Features:

Driving Directions:

From Walker, east on Hwy 200 (approx. 15 miles), east to a left on 6th Ave NW to a right on Bufflehead Ln NW to sign on property.



Listed By:
Bill Hansen Realty/Longville

Affinity Real Estate Inc. participates in the Regional Multiple Listing Service of Minnesota, Inc Broker Reciprocity (sm) program, allowing us to display other broker's listings on our website. All properties are subject to prior sale, change or withdrawal.



Call Affinity Real Estate

218-237-3333

info@affinityrealestate.com



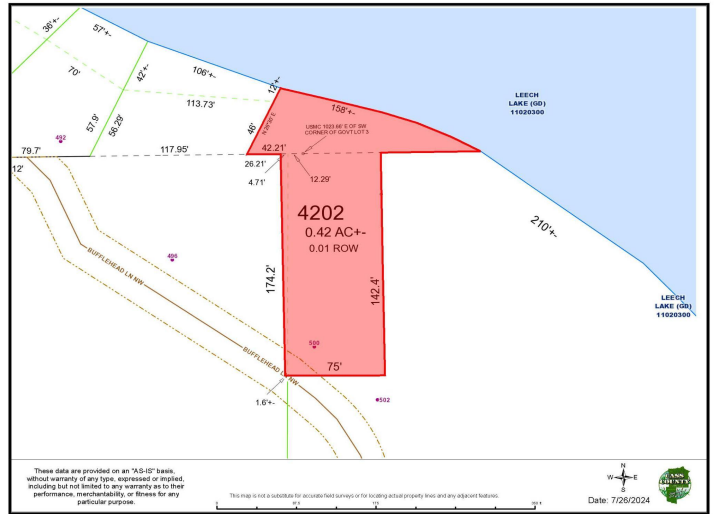
Affinity Real Estate - 600 Park Avenue South - Park Rapids MN 56470



website: www.AffinityRealEstate.com | email: info@affinityrealestate.com | office: 218-237-3333 | fax:218-237-3377



\$200,000
MLS 6574337 Lake Land
500 Bufflehead Lane
Walker MN 56484



website: www.AffinityRealEstate.com | email: info@affinityrealestate.com | office: 218-237-3333 | fax:218-237-3377



\$200,000
 MLS 6574337 Lake Land
 500 Bufflehead Lane
 Walker MN 56484