



MLS 6574825 Lake Land

\$60,000

Description:

Hurry! Only 2 prime lots in Lake Haven Acres on Blackwater Lake remain. Build a seasonal cabin or year round dream home. The choice is yours. Enjoy all the amenities of association living which include... access to both Blackwater and Mule Lakes. A private boat launch on Blackwater Lake. A pool, bath house and laundry facilities. Sand beaches on both lakes and a dock on the lake of your choice. Enjoy the true "Up North" experience. Surrounded by many lakes and only 7 miles from downtown Longville. Close to 1000's of acres of public hunting land, and ATV and snowmobile trails. Escape the noise and commotion of the big cities. Come check out beautiful Cass County in the big woods of northern Minnesota !!!

Additional Details:

Lot Acres	0.01
Lot Dimensions	50 x 70 x50 x70
School District	118
Taxes	\$168
Taxes with Assessments	\$168
Tax Year	2024

Additional Features:

Driving Directions:

From Longville, South on MN 84, 7 miles to Lake Haven Acres on the RT. From Hackensack, E onto County 5, 9.3 miles to Rt onto County 11, 3.8 miles to Rt onto MN 84 S, .8 Miles to Lake Haven Acres on RT.



Listed By:
Timber Ghost Realty, LLC

Affinity Real Estate Inc. participates in the Regional Multiple Listing Service of Minnesota, Inc Broker Reciprocity (sm) program, allowing us to display other broker's listings on our website. All properties are subject to prior sale, change or withdrawal.



Call Affinity Real Estate

218-237-3333

info@affinityrealestate.com



Affinity Real Estate - 600 Park Avenue South - Park Rapids MN 56470



website: www.AffinityRealEstate.com | email: info@affinityrealestate.com | office: 218-237-3333 | fax: 218-237-3377



\$60,000
MLS 6574825 Lake Land
XXX State Hwy 84
Longville MN 56655



website: www.AffinityRealEstate.com | email: info@affinityrealestate.com | office: 218-237-3333 | fax:218-237-3377



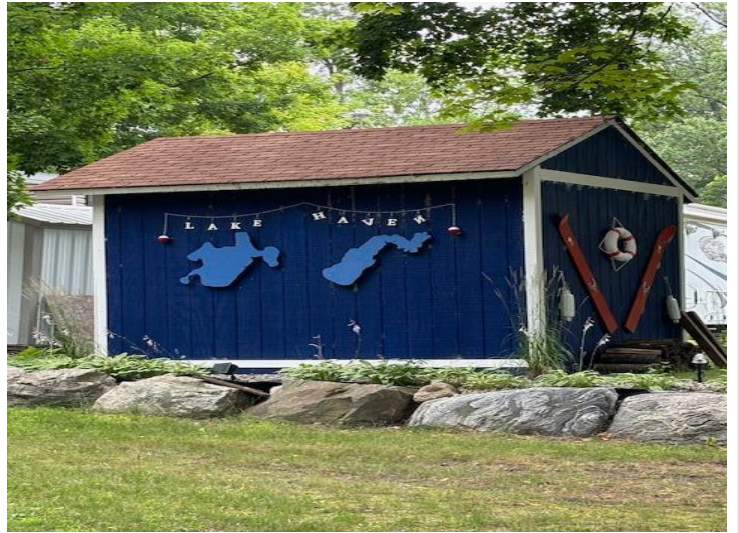
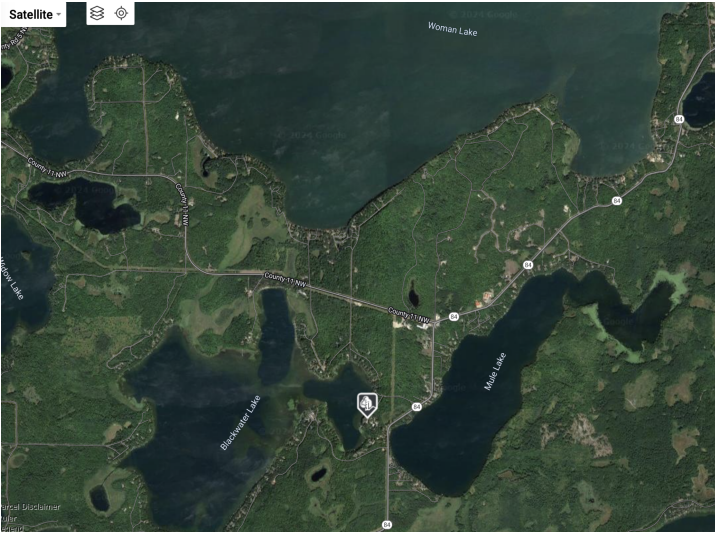
\$60,000
MLS 6574825 Lake Land
XXX State Hwy 84
Longville MN 56655



website: www.AffinityRealEstate.com | email: info@affinityrealestate.com | office: 218-237-3333 | fax:218-237-3377



\$60,000
MLS 6574825 Lake Land
XXX State Hwy 84
Longville MN 56655



website: www.AffinityRealEstate.com | email: info@affinityrealestate.com | office: 218-237-3333 | fax:218-237-3377



\$60,000
MLS 6574825 Lake Land
XXX State Hwy 84
Longville MN 56655