



MLS 6574856 Residential

**\$149,900**

1,608 sq ft  
4 bedrooms  
1 baths

913 Mississippi Avenue  
Bemidji MN 56601

Status: Active

**Description:**

This 4 bedroom 1 bathroom home lays well on this lot. With a fenced in back yard, covered front porch, a park right across the street and off street parking barely scratches the surface of the value in this property. As you walk in, you will find 2 bedrooms up and 2 on the main floor. A full main floor bathroom with a claw tub shower combo! Find yourself cooking in the spacious kitchen and plenty of cabinets for storage. To wrap it all up there is laundry on site as well.

**Additional Details:**

Year Built	1910
Lot Acres	0.16
Lot Dimensions	50x140
School District	31
Taxes	\$1,000
Taxes with Assessments	\$1,000
Tax Year	2024

**Additional Features:**

**Basement:** Drainage System, Full, Concrete **Fuel:** Natural Gas **Heat:** Forced Air **Sewer:** City Sewer/Connected **Water:** City Water/Connected **Air Conditioning:** None

**Driving Directions:**

913 Mississippi Ave NW 4 blocks N of 5th ST



Listed By:  
218 Real Estate

Affinity Real Estate Inc. participates in the Regional Multiple Listing Service of Minnesota, Inc Broker Reciprocity (sm) program, allowing us to display other broker's listings on our website. All properties are subject to prior sale, change or withdrawal.



Call Affinity Real Estate

**218-237-3333**

[info@affinityrealestate.com](mailto:info@affinityrealestate.com)



Affinity Real Estate - 600 Park Avenue South - Park Rapids MN 56470





website: [www.AffinityRealEstate.com](http://www.AffinityRealEstate.com) | email: [info@affinityrealestate.com](mailto:info@affinityrealestate.com) | office: 218-237-3333 | fax:218-237-3377



**\$149,900**  
MLS 6574856 Residential  
913 Mississippi Avenue  
Bemidji MN 56601





website: [www.AffinityRealEstate.com](http://www.AffinityRealEstate.com) | email: [info@affinityrealestate.com](mailto:info@affinityrealestate.com) | office: 218-237-3333 | fax: 218-237-3377

**Affinity**  
REAL ESTATE INC

**\$149,900**  
MLS 6574856 Residential  
913 Mississippi Avenue  
Bemidji MN 56601





website: [www.AffinityRealEstate.com](http://www.AffinityRealEstate.com) | email: [info@affinityrealestate.com](mailto:info@affinityrealestate.com) | office: 218-237-3333 | fax: 218-237-3377

**Affinity**  
REAL ESTATE INC

**\$149,900**  
MLS 6574856 Residential  
913 Mississippi Avenue  
Bemidji MN 56601





website: [www.AffinityRealEstate.com](http://www.AffinityRealEstate.com) | email: [info@affinityrealestate.com](mailto:info@affinityrealestate.com) | office: 218-237-3333 | fax:218-237-3377

**Affinity**  
REAL ESTATE INC

**\$149,900**  
MLS 6574856 Residential  
913 Mississippi Avenue  
Bemidji MN 56601





website: [www.AffinityRealEstate.com](http://www.AffinityRealEstate.com) | email: [info@affinityrealestate.com](mailto:info@affinityrealestate.com) | office: 218-237-3333 | fax:218-237-3377

**Affinity**  
REAL ESTATE INC

**\$149,900**  
MLS 6574856 Residential  
913 Mississippi Avenue  
Bemidji MN 56601



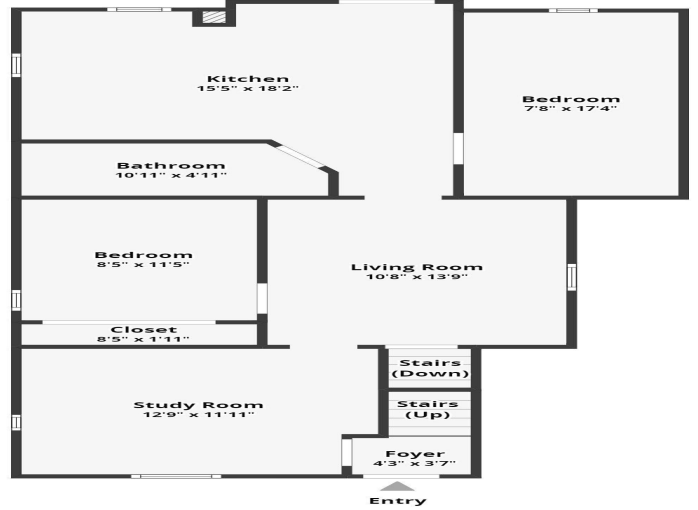


website: [www.AffinityRealEstate.com](http://www.AffinityRealEstate.com) | email: [info@affinityrealestate.com](mailto:info@affinityrealestate.com) | office: 218-237-3333 | fax:218-237-3377

**Affinity**  
REAL ESTATE INC

**\$149,900**  
MLS 6574856 Residential  
913 Mississippi Avenue  
Bemidji MN 56601

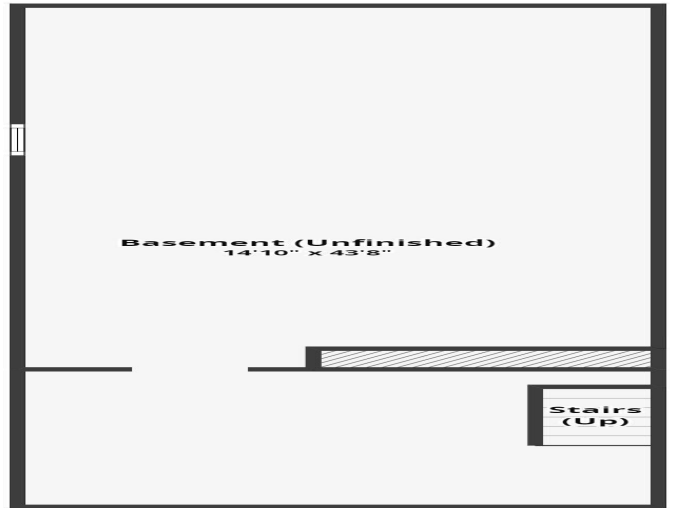




All dimensions are approximate and subject to independent verification



All dimensions are approximate and subject to independent verification



All dimensions are approximate and subject to independent verification

website: [www.AffinityRealEstate.com](http://www.AffinityRealEstate.com) | email: [info@affinityrealestate.com](mailto:info@affinityrealestate.com) | office: 218-237-3333 | fax:218-237-3377



**\$149,900**  
 MLS 6574856 Residential  
 913 Mississippi Avenue  
 Bemidji MN 56601