



MLS 6574895 Residential

**\$629,900**

4,138 sq ft  
6 bedrooms  
4 baths

36548 Jeff Lake Road  
Richville MN 56576

Status: Hold

**Description:**

Outdoor recreation is yours with this 6 bedroom, 4 bath home located on over 8 ACRES located just outside of Richville. This remarkable home features an open living concept with an eat-in kitchen with center island and stainless steel appliances, a huge walk pantry, informal dining room, welcoming living room, main floor primary bedroom with walk-through closet and private bath, main floor laundry, lower level family room with additional bedrooms. Low maintenance exterior, the perfect play area set up with the perfect play system! The large backyard patio and covered patio area is perfect for entertaining! Additional 42x36 insulated garage, 20x24 finished garage & a barn! Don't wait, schedule a private viewing today!

**Additional Details:**

Year Built	1954
Lot Acres	8.35
Lot Dimensions	547x862x573x829
Garage Stalls	8
School District	549
Taxes	\$3,308
Taxes with Assessments	\$3,308
Tax Year	2024

**Additional Features:**

**Basement:** Block, Egress Window(s), Finished, Partial **Fuel:** Propane **Garage:** 8 **Heat:** Baseboard, Forced Air, Heat Pump **Sewer:** Private Sewer, Tank with Drainage Field **Water:** Drilled, Private **Air Conditioning:** Central Air, Ductless Mini-Split, Wall Unit(s)

**Driving Directions:**

36548 Jeff Lake Rd



Listed By:  
Coldwell Banker Preferred Partners

Affinity Real Estate Inc. participates in the Regional Multiple Listing Service of Minnesota, Inc Broker Reciprocity (sm) program, allowing us to display other broker's listings on our website. All properties are subject to prior sale, change or withdrawal.



Call Affinity Real Estate

**218-237-3333**

[info@affinityrealestate.com](mailto:info@affinityrealestate.com)



Affinity Real Estate - 600 Park Avenue South - Park Rapids MN 56470



website: [www.AffinityRealEstate.com](http://www.AffinityRealEstate.com) | email: [info@affinityrealestate.com](mailto:info@affinityrealestate.com) | office: 218-237-3333 | fax:218-237-3377

**Affinity**  
REAL ESTATE INC

**\$629,900**  
MLS 6574895 Residential  
36548 Jeff Lake Road  
Richville MN 56576



website: [www.AffinityRealEstate.com](http://www.AffinityRealEstate.com) | email: [info@affinityrealestate.com](mailto:info@affinityrealestate.com) | office: 218-237-3333 | fax:218-237-3377

**Affinity**  
REAL ESTATE INC

**\$629,900**  
MLS 6574895 Residential  
36548 Jeff Lake Road  
Richville MN 56576



website: [www.AffinityRealEstate.com](http://www.AffinityRealEstate.com) | email: [info@affinityrealestate.com](mailto:info@affinityrealestate.com) | office: 218-237-3333 | fax:218-237-3377

**Affinity**  
REAL ESTATE INC

**\$629,900**  
MLS 6574895 Residential  
36548 Jeff Lake Road  
Richville MN 56576



website: [www.AffinityRealEstate.com](http://www.AffinityRealEstate.com) | email: [info@affinityrealestate.com](mailto:info@affinityrealestate.com) | office: 218-237-3333 | fax:218-237-3377

**Affinity**  
REAL ESTATE INC

**\$629,900**  
MLS 6574895 Residential  
36548 Jeff Lake Road  
Richville MN 56576



website: [www.AffinityRealEstate.com](http://www.AffinityRealEstate.com) | email: [info@affinityrealestate.com](mailto:info@affinityrealestate.com) | office: 218-237-3333 | fax:218-237-3377

**Affinity**  
REAL ESTATE INC

**\$629,900**  
MLS 6574895 Residential  
36548 Jeff Lake Road  
Richville MN 56576



website: [www.AffinityRealEstate.com](http://www.AffinityRealEstate.com) | email: [info@affinityrealestate.com](mailto:info@affinityrealestate.com) | office: 218-237-3333 | fax:218-237-3377



**\$629,900**  
MLS 6574895 Residential  
36548 Jeff Lake Road  
Richville MN 56576



website: [www.AffinityRealEstate.com](http://www.AffinityRealEstate.com) | email: [info@affinityrealestate.com](mailto:info@affinityrealestate.com) | office: 218-237-3333 | fax: 218-237-3377

**Affinity**  
REAL ESTATE INC

**\$629,900**  
MLS 6574895 Residential  
36548 Jeff Lake Road  
Richville MN 56576





website: [www.AffinityRealEstate.com](http://www.AffinityRealEstate.com) | email: [info@affinityrealestate.com](mailto:info@affinityrealestate.com) | office: 218-237-3333 | fax: 218-237-3377

**Affinity**  
REAL ESTATE INC

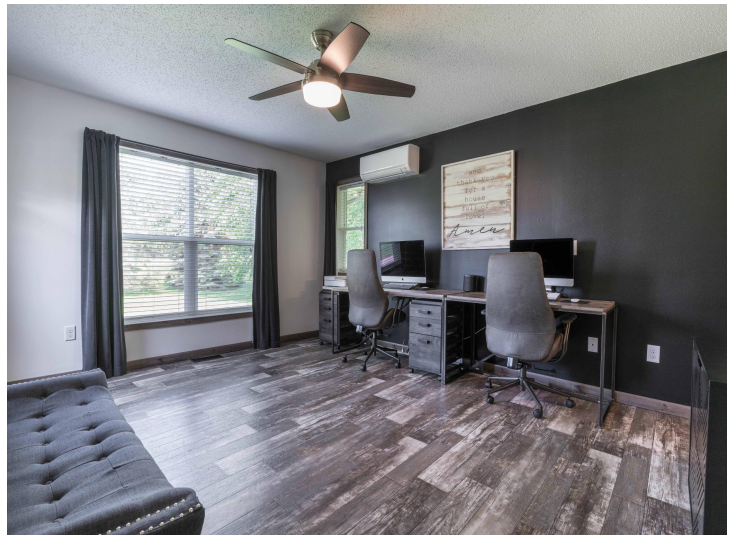
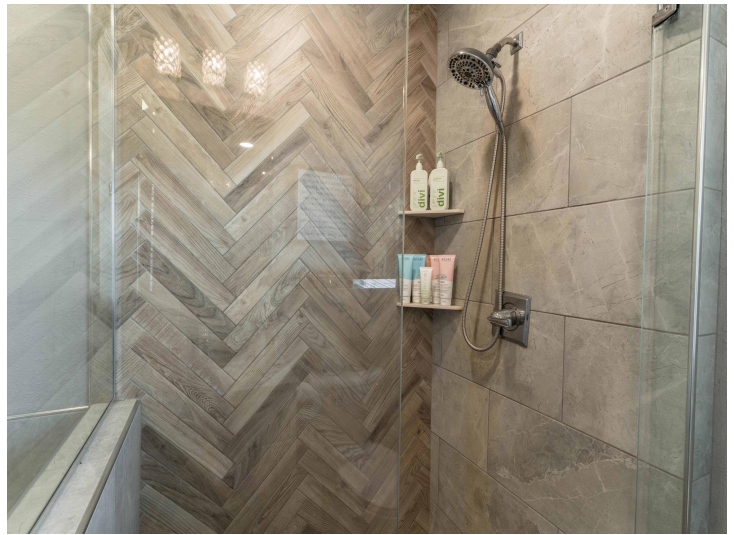
**\$629,900**  
MLS 6574895 Residential  
36548 Jeff Lake Road  
Richville MN 56576



website: [www.AffinityRealEstate.com](http://www.AffinityRealEstate.com) | email: [info@affinityrealestate.com](mailto:info@affinityrealestate.com) | office: 218-237-3333 | fax: 218-237-3377

**Affinity**  
REAL ESTATE INC

**\$629,900**  
MLS 6574895 Residential  
36548 Jeff Lake Road  
Richville MN 56576



website: [www.AffinityRealEstate.com](http://www.AffinityRealEstate.com) | email: [info@affinityrealestate.com](mailto:info@affinityrealestate.com) | office: 218-237-3333 | fax:218-237-3377



**\$629,900**  
MLS 6574895 Residential  
36548 Jeff Lake Road  
Richville MN 56576



website: [www.AffinityRealEstate.com](http://www.AffinityRealEstate.com) | email: [info@affinityrealestate.com](mailto:info@affinityrealestate.com) | office: 218-237-3333 | fax:218-237-3377

**Affinity**  
REAL ESTATE INC

**\$629,900**  
MLS 6574895 Residential  
36548 Jeff Lake Road  
Richville MN 56576



website: [www.AffinityRealEstate.com](http://www.AffinityRealEstate.com) | email: [info@affinityrealestate.com](mailto:info@affinityrealestate.com) | office: 218-237-3333 | fax: 218-237-3377

**Affinity**  
REAL ESTATE INC

**\$629,900**  
MLS 6574895 Residential  
36548 Jeff Lake Road  
Richville MN 56576



website: [www.AffinityRealEstate.com](http://www.AffinityRealEstate.com) | email: [info@affinityrealestate.com](mailto:info@affinityrealestate.com) | office: 218-237-3333 | fax: 218-237-3377

**Affinity**  
REAL ESTATE INC

**\$629,900**  
MLS 6574895 Residential  
36548 Jeff Lake Road  
Richville MN 56576



website: [www.AffinityRealEstate.com](http://www.AffinityRealEstate.com) | email: [info@affinityrealestate.com](mailto:info@affinityrealestate.com) | office: 218-237-3333 | fax:218-237-3377



**\$629,900**  
MLS 6574895 Residential  
36548 Jeff Lake Road  
Richville MN 56576



website: [www.AffinityRealEstate.com](http://www.AffinityRealEstate.com) | email: [info@affinityrealestate.com](mailto:info@affinityrealestate.com) | office: 218-237-3333 | fax:218-237-3377



**\$629,900**  
MLS 6574895 Residential  
36548 Jeff Lake Road  
Richville MN 56576