



MLS 6575670 Lake Land

\$250,000

Description:

8.8 acre lot with 400 feet of lake shore near Itasca State Park. Large mature trees surround the area giving you lots of privacy. Settled on Glanders Lake and right next to Long Lost Lake. On site is a large enclosed shelter perfect for all your gatherings. This spot has excellent fishing in a lake with no public boat access. Perfect place to park your camper or build your own future cabin. Quiet and secluded lot with only one neighbor. These lakes are loon nesting areas that provide a quiet and relaxing home. Lot of work done to develop the lot including clearing brush to the lake, dirt work to level the ground, grass planted, burying power/internet lines and a gravel road added.

Additional Details:

Lot Acres	8.87
Lot Dimensions	irregular
School District	2311
Taxes	\$424
Taxes with Assessments	\$478
Tax Year	2024

Additional Features:

Driving Directions:

From Bagley Minnesota Head south on State Hwy 92 E/Main Ave S toward 1st St SW/Great Northern Ave E Continue to follow State Hwy 92 E Continue onto MN-200 E Turn right onto Co Hwy 39 Turn right onto Seaberg Ln 13102 Seaberg Ln Bagley, MN 56621



Listed By:
eXp Realty (219 WF)

Affinity Real Estate Inc. participates in the Regional Multiple Listing Service of Minnesota, Inc Broker Reciprocity (sm) program, allowing us to display other broker's listings on our website. All properties are subject to prior sale, change or withdrawal.



Call Affinity Real Estate

218-237-3333

info@affinityrealestate.com



Affinity Real Estate - 600 Park Avenue South - Park Rapids MN 56470



website: www.AffinityRealEstate.com | email: info@affinityrealestate.com | office: 218-237-3333 | fax:218-237-3377



\$250,000
MLS 6575670 Lake Land
13102 Seaberg Lane
Bagley MN 56621



website: www.AffinityRealEstate.com | email: info@affinityrealestate.com | office: 218-237-3333 | fax:218-237-3377



\$250,000
MLS 6575670 Lake Land
13102 Seaberg Lane
Bagley MN 56621



website: www.AffinityRealEstate.com | email: info@affinityrealestate.com | office: 218-237-3333 | fax:218-237-3377

Affinity
REAL ESTATE INC

\$250,000
MLS 6575670 Lake Land
13102 Seaberg Lane
Bagley MN 56621



website: www.AffinityRealEstate.com | email: info@affinityrealestate.com | office: 218-237-3333 | fax:218-237-3377



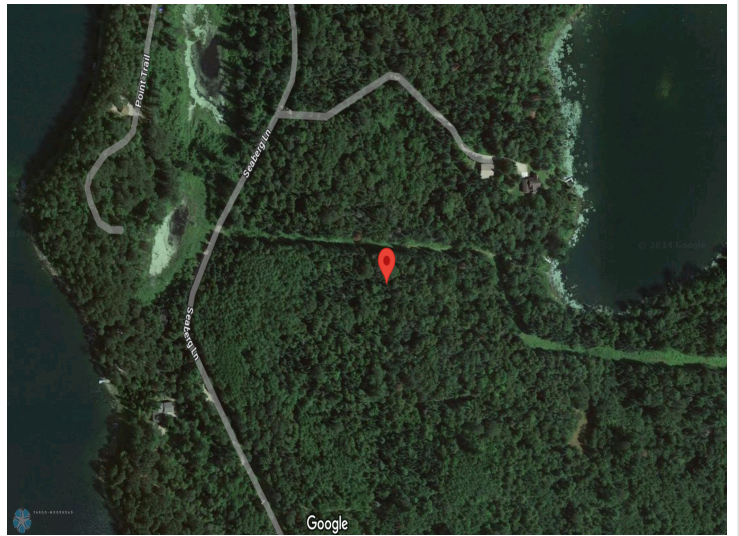
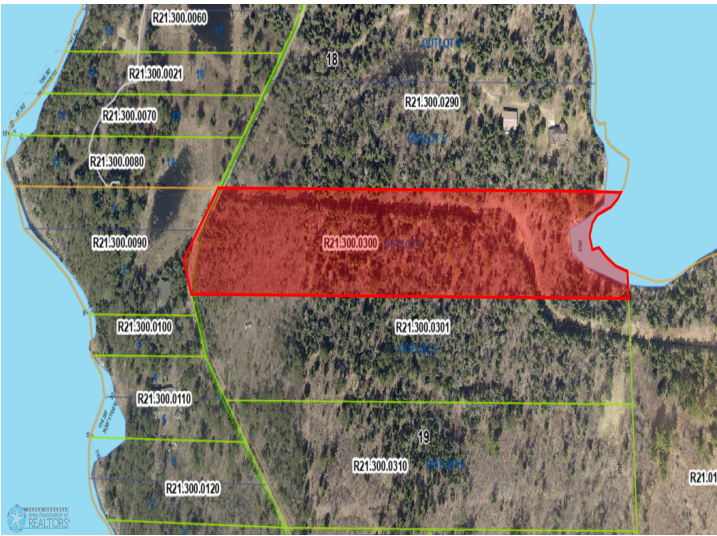
\$250,000
MLS 6575670 Lake Land
13102 Seaberg Lane
Bagley MN 56621



website: www.AffinityRealEstate.com | email: info@affinityrealestate.com | office: 218-237-3333 | fax:218-237-3377



\$250,000
MLS 6575670 Lake Land
13102 Seaberg Lane
Bagley MN 56621



website: www.AffinityRealEstate.com | email: info@affinityrealestate.com | office: 218-237-3333 | fax:218-237-3377



\$250,000
MLS 6575670 Lake Land
13102 Seaberg Lane
Bagley MN 56621