



MLS 6575754 Residential

\$219,000

1 sq ft
2 bedrooms
1 baths

18575 State 34
Park Rapids MN 56470

Status: Active

Description:

Put your dreams into motion with the purchase of this large 12 acre piece of land that boasts 1400ft of prime HWY 34 frontage in between Park Rapids and Dorset. This highly desirable location has some of the highest vehicle traffic in the area. The land is mostly level and there is an older home on the property that could be incorporated into your business plans or removed to make way for endless new business possibilities. Don't miss this rare opportunity to put your business in front of the vast majority of people that travel through the area!

Additional Details:

Year Built	1948
Lot Acres	12.37
Lot Dimensions	1400x855x1292x88
School District	309
Taxes	\$682
Taxes with Assessments	\$682
Tax Year	2024

Additional Features:

Basement: Block **Fuel:** Propane **Heat:** None **Sewer:** Septic System Compliant - No **Water:** Sand Point **Air Conditioning:** None

Driving Directions:

From Park Rapids go East on HWY 34 aprox. 3 miles to the property on the right.



Listed By:
Dane Arthur Real Estate Agency-Park Rapids

Affinity Real Estate Inc. participates in the Regional Multiple Listing Service of Minnesota, Inc Broker Reciprocity (sm) program, allowing us to display other broker's listings on our website. All properties are subject to prior sale, change or withdrawal.



Call Affinity Real Estate
218-237-3333
info@affinityrealestate.com



Affinity Real Estate - 600 Park Avenue South - Park Rapids MN 56470



website: www.AffinityRealEstate.com | email: info@affinityrealestate.com | office: 218-237-3333 | fax:218-237-3377



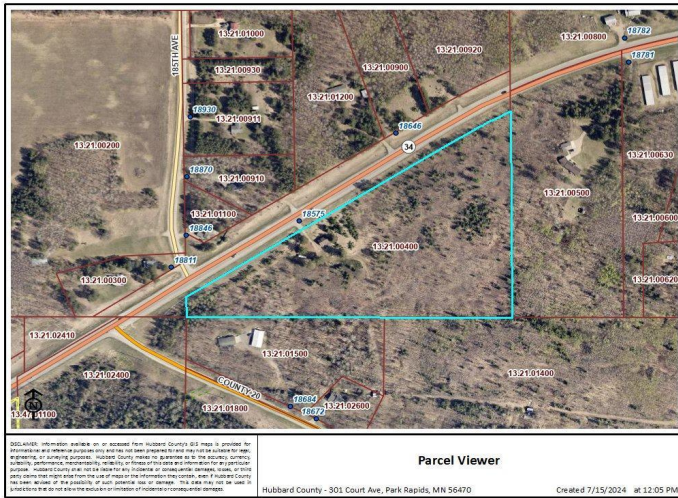
\$219,000
MLS 6575754 Residential
18575 State 34
Park Rapids MN 56470



website: www.AffinityRealEstate.com | email: info@affinityrealestate.com | office: 218-237-3333 | fax:218-237-3377



\$219,000
MLS 6575754 Residential
18575 State 34
Park Rapids MN 56470



website: www.AffinityRealEstate.com | email: info@affinityrealestate.com | office: 218-237-3333 | fax: 218-237-3377



\$219,000
 MLS 6575754 Residential
 18575 State 34
 Park Rapids MN 56470