



MLS 6576335 Lake Home

**\$374,900**

1,823 sq ft  
3 bedrooms  
2 baths

18892 Estate Drive  
Park Rapids MN 56470

Waterfront: Mud Lake (Henrietta Twp.)

Status: Active

**Description:**

Discover this stunning 3-bedroom, 2-bathroom home on Mud Lake, boasting over 700 ft. of lakeshore. The house has been meticulously updated with features of custom cork flooring, generous storage space, a 2-stall attached heated and insulated garage, as well as a 32x32 heated and insulated shop, along with an additional 14x24 garage. Perfectly situated for easy access to Park Rapids and the surrounding area's beautiful lakes.

**Additional Details:**

Year Built	1978
Lot Acres	22.15
Lot Dimensions	80x500x780xirr
Garage Stalls	2
School District	309
Taxes	\$2,006
Taxes with Assessments	\$2,216
Tax Year	2024

**Additional Features:**

**Basement:** Block, Egress Window(s), Finished, Full, Walkout **Fuel:** Propane, Wood **Garage:** 2 **Heat:** Forced Air, Outdoor Boiler **Sewer:** Private Sewer, Tank with Drainage Field **Water:** Drilled, Well **Air Conditioning:** Central Air

**Driving Directions:**

From Hwys 71/34 in Park Rapids head East on 34 to a left on Estate Drive. Proceed to for sale sign.



Listed By:  
Wolff & Simon Real Estate

Affinity Real Estate Inc. participates in the Regional Multiple Listing Service of Minnesota, Inc Broker Reciprocity (sm) program, allowing us to display other broker's listings on our website. All properties are subject to prior sale, change or withdrawal.



Call Affinity Real Estate

**218-237-3333**

[info@affinityrealestate.com](mailto:info@affinityrealestate.com)



Affinity Real Estate - 600 Park Avenue South - Park Rapids MN 56470



website: [www.AffinityRealEstate.com](http://www.AffinityRealEstate.com) | email: [info@affinityrealestate.com](mailto:info@affinityrealestate.com) | office: 218-237-3333 | fax: 218-237-3377

**Affinity**  
REAL ESTATE INC

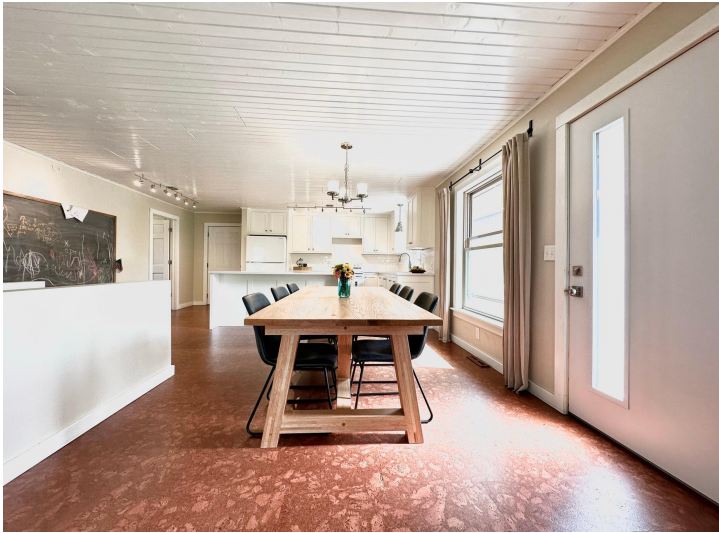
**\$374,900**  
MLS 6576335 Lake Home  
18892 Estate Drive  
Park Rapids MN 56470



website: [www.AffinityRealEstate.com](http://www.AffinityRealEstate.com) | email: [info@affinityrealestate.com](mailto:info@affinityrealestate.com) | office: 218-237-3333 | fax:218-237-3377



**\$374,900**  
MLS 6576335 Lake Home  
18892 Estate Drive  
Park Rapids MN 56470



website: [www.AffinityRealEstate.com](http://www.AffinityRealEstate.com) | email: [info@affinityrealestate.com](mailto:info@affinityrealestate.com) | office: 218-237-3333 | fax:218-237-3377

**Affinity**  
REAL ESTATE INC

**\$374,900**  
MLS 6576335 Lake Home  
18892 Estate Drive  
Park Rapids MN 56470



website: [www.AffinityRealEstate.com](http://www.AffinityRealEstate.com) | email: [info@affinityrealestate.com](mailto:info@affinityrealestate.com) | office: 218-237-3333 | fax: 218-237-3377

**Affinity**  
REAL ESTATE INC

**\$374,900**  
MLS 6576335 Lake Home  
18892 Estate Drive  
Park Rapids MN 56470



website: [www.AffinityRealEstate.com](http://www.AffinityRealEstate.com) | email: [info@affinityrealestate.com](mailto:info@affinityrealestate.com) | office: 218-237-3333 | fax:218-237-3377

**Affinity**  
REAL ESTATE INC

**\$374,900**  
MLS 6576335 Lake Home  
18892 Estate Drive  
Park Rapids MN 56470



website: [www.AffinityRealEstate.com](http://www.AffinityRealEstate.com) | email: [info@affinityrealestate.com](mailto:info@affinityrealestate.com) | office: 218-237-3333 | fax:218-237-3377



**\$374,900**  
MLS 6576335 Lake Home  
18892 Estate Drive  
Park Rapids MN 56470



website: [www.AffinityRealEstate.com](http://www.AffinityRealEstate.com) | email: [info@affinityrealestate.com](mailto:info@affinityrealestate.com) | office: 218-237-3333 | fax:218-237-3377

**Affinity**  
REAL ESTATE INC

**\$374,900**  
MLS 6576335 Lake Home  
18892 Estate Drive  
Park Rapids MN 56470





website: [www.AffinityRealEstate.com](http://www.AffinityRealEstate.com) | email: [info@affinityrealestate.com](mailto:info@affinityrealestate.com) | office: 218-237-3333 | fax:218-237-3377



**\$374,900**  
MLS 6576335 Lake Home  
18892 Estate Drive  
Park Rapids MN 56470



website: [www.AffinityRealEstate.com](http://www.AffinityRealEstate.com) | email: [info@affinityrealestate.com](mailto:info@affinityrealestate.com) | office: 218-237-3333 | fax:218-237-3377



**\$374,900**  
MLS 6576335 Lake Home  
18892 Estate Drive  
Park Rapids MN 56470