



MLS 6576778 Residential

\$419,000

4,224 sq ft
9 bedrooms
2 baths

43724 County Highway 19
Sebeka MN 56477

Status: Active

Description:

Truly a spectacular country property! Rare farmstead with 33.74 +/- acres of wooded, tillable, and pasture land. 2010 built homestead with a large 2020 built addition all including 9 bedrooms, lots of storage space, attached garage, multiple out-buildings, and so much to offer! Flower gardens and beautiful crops along with plenty of pasture land for all your animals. Large kitchen and family room areas and hardwood floors through most of the homestead. Although the electricity is not currently hooked up, it can be can be reconnected, and set up with a 200 amp breaker service. Formerly had a forced air propane furnace and in-floor heat in the original homestead and attached garage. Property includes a 2 stall detached 24x32 garage with lean-to, well house, 40x64 large shop insulated with wood heat, and 14 ft sidewalls. 12ft high overhead door 16ft wide and cement floor, 36x64 pole shed used as a barn, 24x32 pole shed used as a hen house, loafing sheds, and silo. This property is an excellent hunting property with an abundance of deer and wildlife! Mixed wooded land included birch, oak, pine, and poplar trees. Main buildings and most gates attached will stay. Other farming operation items are negotiable. (Adjoining 51 acres and homestead to the south are also available for an additional price.) Property has been surveyed.

Additional Details:

Year Built	2010
Lot Acres	33.74
Lot Dimensions	33.74 acres
Garage Stalls	2
School District	820
Taxes	\$3,792
Taxes with Assessments	\$3,792
Tax Year	2024

Additional Features:

Basement: Block, Insulating Concrete Forms, Walkout **Fuel:** Wood **Garage:** 2 **Heat:** Wood Stove **Sewer:** Private Sewer **Water:** Drilled **Air Conditioning:** None

Driving Directions:

From Sebeka go west on Co Hwy 8 for 6.3 miles, turn left and head south on Co Hwy 19.



Listed By:
Counselor Realty of Detroit Lakes

Affinity Real Estate Inc. participates in the Regional Multiple Listing Service of Minnesota, Inc Broker Reciprocity (sm) program, allowing us to display other broker's listings on our website. All properties are subject to prior sale, change or withdrawal.



Call Affinity Real Estate

218-237-3333

info@affinityrealestate.com



Affinity Real Estate - 600 Park Avenue South - Park Rapids MN 56470



website: www.AffinityRealEstate.com | email: info@affinityrealestate.com | office: 218-237-3333 | fax:218-237-3377



\$419,000
MLS 6576778 Residential
43724 County Highway 19
Sebeka MN 56477



website: www.AffinityRealEstate.com | email: info@affinityrealestate.com | office: 218-237-3333 | fax:218-237-3377



\$419,000
MLS 6576778 Residential
43724 County Highway 19
Sebeka MN 56477



website: www.AffinityRealEstate.com | email: info@affinityrealestate.com | office: 218-237-3333 | fax:218-237-3377



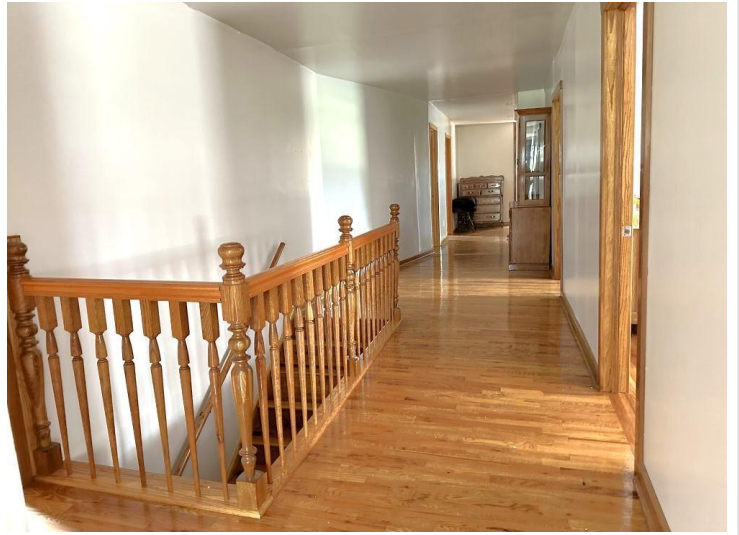
\$419,000
MLS 6576778 Residential
43724 County Highway 19
Sebeka MN 56477



website: www.AffinityRealEstate.com | email: info@affinityrealestate.com | office: 218-237-3333 | fax:218-237-3377



\$419,000
MLS 6576778 Residential
43724 County Highway 19
Sebeka MN 56477



website: www.AffinityRealEstate.com | email: info@affinityrealestate.com | office: 218-237-3333 | fax:218-237-3377



\$419,000
MLS 6576778 Residential
43724 County Highway 19
Sebeka MN 56477



website: www.AffinityRealEstate.com | email: info@affinityrealestate.com | office: 218-237-3333 | fax:218-237-3377

Affinity
REAL ESTATE INC

\$419,000
MLS 6576778 Residential
43724 County Highway 19
Sebeka MN 56477



website: www.AffinityRealEstate.com | email: info@affinityrealestate.com | office: 218-237-3333 | fax:218-237-3377

Affinity
REAL ESTATE INC

\$419,000
MLS 6576778 Residential
43724 County Highway 19
Sebeka MN 56477



website: www.AffinityRealEstate.com | email: info@affinityrealestate.com | office: 218-237-3333 | fax:218-237-3377

Affinity
REAL ESTATE INC

\$419,000
MLS 6576778 Residential
43724 County Highway 19
Sebeka MN 56477



website: www.AffinityRealEstate.com | email: info@affinityrealestate.com | office: 218-237-3333 | fax:218-237-3377



\$419,000
MLS 6576778 Residential
43724 County Highway 19
Sebeka MN 56477



website: www.AffinityRealEstate.com | email: info@affinityrealestate.com | office: 218-237-3333 | fax:218-237-3377



\$419,000
MLS 6576778 Residential
43724 County Highway 19
Sebeka MN 56477



website: www.AffinityRealEstate.com | email: info@affinityrealestate.com | office: 218-237-3333 | fax:218-237-3377



\$419,000
MLS 6576778 Residential
43724 County Highway 19
Sebeka MN 56477



website: www.AffinityRealEstate.com | email: info@affinityrealestate.com | office: 218-237-3333 | fax:218-237-3377



\$419,000
MLS 6576778 Residential
43724 County Highway 19
Sebeka MN 56477



website: www.AffinityRealEstate.com | email: info@affinityrealestate.com | office: 218-237-3333 | fax:218-237-3377



\$419,000
MLS 6576778 Residential
43724 County Highway 19
Sebeka MN 56477