



MLS 6577007 Lake Home

\$1,249,900

4,601 sq ft
4 bedrooms
5 baths

21574 Hedgerow Lane
Nevis MN 56467

Waterfront: Ojibway

Status: Active

Description:

This exceptionally well-crafted, custom-built log home is on beautiful Ojibway Lake in Nevis, MN. Upon entering this magnificent home, you are greeted with expansive views of the lake, boasting four spacious bedrooms, four luxurious bathrooms, and over 4,600 sq ft of elegant living space. The home is adorned with exquisite Australian Cypress hardwood floors. It features a magnificent custom-built fireplace handcrafted with local Field Stone, Custom Cabinets, Stainless Steel Appliances, a game room, and much more! In addition is a new split of approximately 26 Prime hunting land that has been meticulously maintained. This home is situated just minutes away from hundreds of miles of trails that are used for snowmobiling, hiking, snow-skiing, off-road vehicles, 4-wheelers, and public hunting land courtesy of the Paul Bunyan State Forest, which boasts over 105,000 acres. You can also enjoy excellent local restaurants, taverns, and shops nearby!

Additional Details:

Year Built	2000
Lot Acres	28
Lot Dimensions	155x495x151x437
Garage Stalls	3
School District	308
Taxes	\$5,726
Taxes with Assessments	\$5,936
Tax Year	2024

Additional Features:

Fuel: Propane, Wood **Heat:** Forced Air, Fireplace(s), Radiant Floor

Driving Directions:

From 34/71 in Park Rapids, East on 34 to County Road 50, turn right onto County 50, turn right onto Co Hwy 40/County 40 and continue on 225th Ave. Take Heartland Dr. to Hedgerow Lane.



Listed By:
Wolff & Simon Real Estate

Affinity Real Estate Inc. participates in the Regional Multiple Listing Service of Minnesota, Inc Broker Reciprocity (sm) program, allowing us to display other broker's listings on our website. All properties are subject to prior sale, change or withdrawal.



Call Affinity Real Estate

218-237-3333

info@affinityrealestate.com



Affinity Real Estate - 600 Park Avenue South - Park Rapids MN 56470



25 Prime Hunting Acres



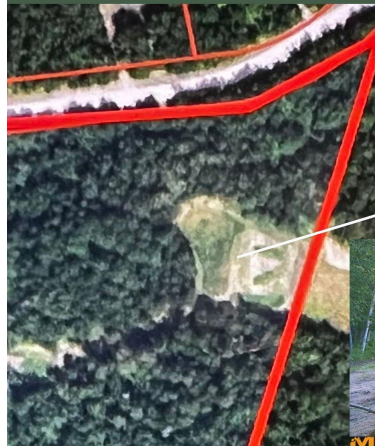
"I could be on your Wall in the Fall"



The Hill

Mix of Clover, Alfalfa planted in spring,

Rye to be Planted in Fall



The Hill



Prepping for fall planting

Path to Arrow Lane

Planted is Red Clover, Timothy, Dutch Clover



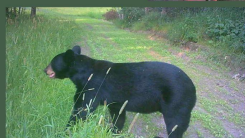
website: www.AffinityRealEstate.com | email: info@affinityrealestate.com | office: 218-237-3333 | fax: 218-237-3377



\$1,249,900

MLS 6577007 Lake Home
21574 Hedgerow Lane
Nevis MN 56467

Path to Arrow Lane

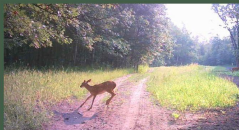


Arrow Lane

Mix of Corn,
Red Clover,
Timothy



Arrow Lane

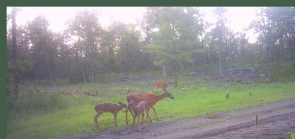
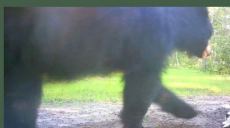
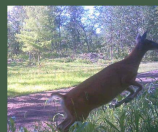


The North Circle

Mix of Ladino
Clover,
Timothy

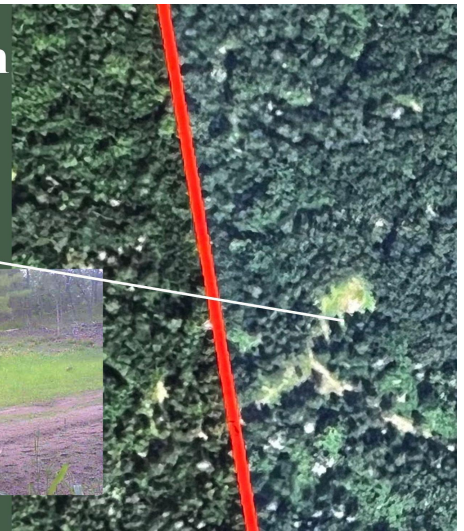


The North Circle



The South Circle

Mix of Corn,
Dutch
Clover, Timothy



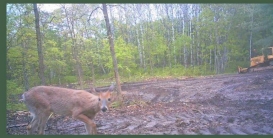
website: www.AffinityRealEstate.com | email: info@affinityrealestate.com | office: 218-237-3333 | fax: 218-237-3377

Affinity
REAL ESTATE INC

\$1,249,900

MLS 6577007 Lake Home
21574 Hedgerow Lane
Nevis MN 56467

The South Circle

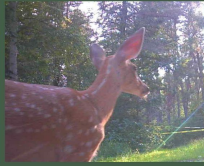


The West Circle & Path to Corner

Mix of Kale, Corn, Soybeans, Dwarf Rape seed, Red Clover

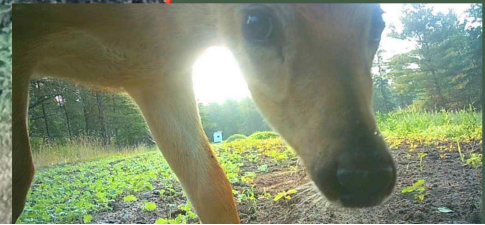
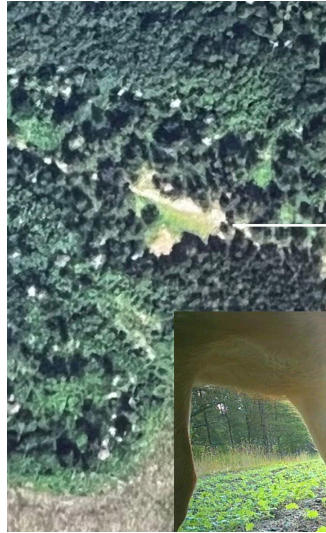


The West Circle & Path to Corner

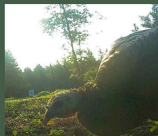


The Corner

Wildflowers, Soybean, Rape seed, Corn, Red Clovers Alaskan Kale



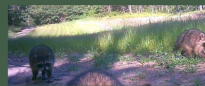
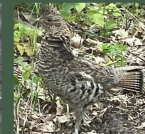
The Corner



On Property Connecting Property Photos



Can you guess what this is?



website: www.AffinityRealEstate.com | email: info@affinityrealestate.com | office: 218-237-3333 | fax:218-237-3377

Affinity
REAL ESTATE INC

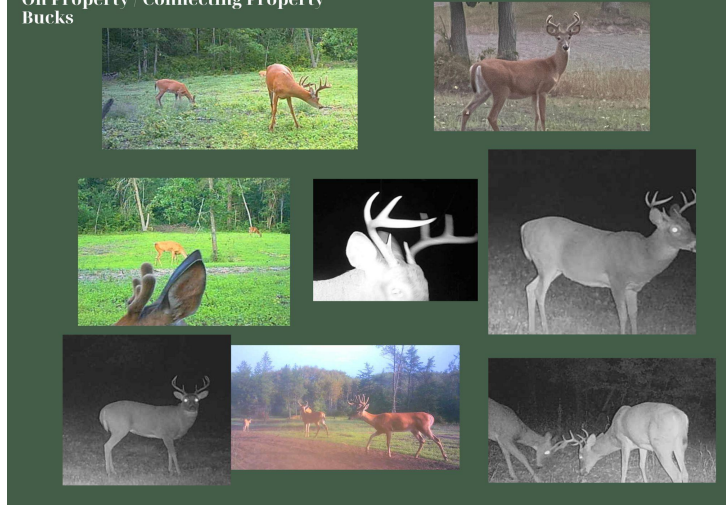
\$1,249,900

MLS 6577007 Lake Home
21574 Hedgerow Lane
Nevis MN 56467

On Property / Connecting Property Bucks



On Property / Connecting Property Bucks



website: www.AffinityRealEstate.com | email: info@affinityrealestate.com | office: 218-237-3333 | fax:218-237-3377



\$1,249,900
 MLS 6577007 Lake Home
 21574 Hedgerow Lane
 Nevis MN 56467



website: www.AffinityRealEstate.com | email: info@affinityrealestate.com | office: 218-237-3333 | fax:218-237-3377



\$1,249,900
MLS 6577007 Lake Home
21574 Hedgerow Lane
Nevis MN 56467



website: www.AffinityRealEstate.com | email: info@affinityrealestate.com | office: 218-237-3333 | fax: 218-237-3377

Affinity
REAL ESTATE INC

\$1,249,900
MLS 6577007 Lake Home
21574 Hedgerow Lane
Nevis MN 56467



website: www.AffinityRealEstate.com | email: info@affinityrealestate.com | office: 218-237-3333 | fax: 218-237-3377

Affinity
REAL ESTATE INC

\$1,249,900
MLS 6577007 Lake Home
21574 Hedgerow Lane
Nevis MN 56467



website: www.AffinityRealEstate.com | email: info@affinityrealestate.com | office: 218-237-3333 | fax: 218-237-3377

Affinity
REAL ESTATE INC

\$1,249,900
MLS 6577007 Lake Home
21574 Hedgerow Lane
Nevis MN 56467



website: www.AffinityRealEstate.com | email: info@affinityrealestate.com | office: 218-237-3333 | fax:218-237-3377

Affinity
REAL ESTATE INC

\$1,249,900
MLS 6577007 Lake Home
21574 Hedgerow Lane
Nevis MN 56467



website: www.AffinityRealEstate.com | email: info@affinityrealestate.com | office: 218-237-3333 | fax: 218-237-3377

Affinity
REAL ESTATE INC

\$1,249,900
MLS 6577007 Lake Home
21574 Hedgerow Lane
Nevis MN 56467



website: www.AffinityRealEstate.com | email: info@affinityrealestate.com | office: 218-237-3333 | fax:218-237-3377

Affinity
REAL ESTATE INC

\$1,249,900
MLS 6577007 Lake Home
21574 Hedgerow Lane
Nevis MN 56467



"We are ready to sell!"
*Custom-built log home on
 Ojibway Lake!*

21574 Hedgerow Lane

Australian Cypress Hardwood Floors

Custom Built finishes Throughout the home!

Custom Built Split Stone Fireplace

Custom Built Spiral Staircase

Footprint Stamps in Gameroom Cement

4,600 sq ft of living space
4 Spacious Bedrooms
3 Luxurious Bathrooms
Spectacular Views!

Locally Sourced Custom Built Split Stone Fire place

website: www.AffinityRealEstate.com | email: info@affinityrealestate.com | office: 218-237-3333 | fax:218-237-3377



\$1,249,900
 MLS 6577007 Lake Home
 21574 Hedgerow Lane
 Nevis MN 56467



Gameroom
Custom Built
Fire place



Australian
Cypress
hardwood
floors



Game Room
Cement
Floors with
Stamped
Animal
Tracks



Custom Built
Wood Spiral
Staircase



Custom Built
Entry Gate & Split Rail Fence

All Within 20 Miles!

Golf
Courses



Head Waters
Tianna
Bears Den
Blueberry Pines
Eagle View
Long Bow
Sand Trap
Brookside



website: www.AffinityRealEstate.com | email: info@affinityrealestate.com | office: 218-237-3333 | fax:218-237-3377



\$1,249,900

MLS 6577007 Lake Home
21574 Hedgerow Lane
Nevis MN 56467

Entertainment & Food nearby!



Nevis
Walker
Dorset



Park Rapids
Akeley



Hundreds of Lakes in a 20 miles radius!

Local Lakes



Popular Lakes Near by:

Ojibway
Mantrap
Belle Taine
Big Sand & Little Sand
Upper & Lower Bottle
Potato
Long Lake
Boulder



ID: 29014900
County: Hubbard
Near: Deer Lane
Border water: No
Sentinel Lake: No
Size and depth
Area: 184.06 acres
Littoral Area¹: 132.5 acres
Shore length: 3.29 miles
Maximum depth: 22 feet
Fish species: black crappie, bluegill, largemouth bass, northern pike, pumpkinseed, yellow bullhead, yellow perch

Ojibway Lake

Ojibway Lake is located in south-central Hubbard County. Ojibway has a surface area of 184 acres and a maximum depth of 22 feet. There is a state-owned public access located on the southwest shore of the lake. Ojibway is connected to Dead Lake by a small channel. Floating between the two lakes is dependent upon water levels in the lakes. Ojibway has excellent water quality and clarity, and supports good populations of Largemouth Bass, Northern Pike, and panfish.

Ojibway supports a healthy Largemouth Bass population both in numbers and size. Anglers will find good numbers of Largemouth Bass in the 12 to 16 inch size range and bass up to 19.7 inches were sampled during the survey. Good water quality, aquatic vegetation cover, and spawning substrate provide excellent habitat for Largemouth Bass in Ojibway. Present and past surveys have shown the panfish population in Ojibway to fluctuate from moderate to high numbers and can provide good fishing for Black Crappie, Bluegill, and Pumpkinseed. The panfish population in Ojibway is known more for numbers than size of fish. Anglers will find Black Crappie in the 9-11 inch size range, and Bluegill and Pumpkinseed in the 6-7 inch size range. Northern Pike are abundant in Ojibway with the population dominated by small, "hammer handle" pike. Sampled Northern Pike had an average length and weight of 19.6 inches and 1.5 pounds, with pike measured up to 30.9 inches.

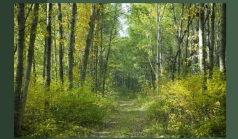
Currently no aquatic invasive species (AIS) have been identified in Ojibway. To avoid spreading AIS, lake users are required to remove all aquatic plants or animals from their watercraft and drain all water from their boats before leaving the lake.

Paul Bunyan

State Forest



- x-county skiing
- 18 miles hiking
- 37 miles class 1 ATV
- 37 miles class 2 ATV
- 87 miles off-highway
- 60 miles snowmobiling



website: www.AffinityRealEstate.com | email: info@affinityrealestate.com | office: 218-237-3333 | fax: 218-237-3377



\$1,249,900
MLS 6577007 Lake Home
21574 Hedgerow Lane
Nevis MN 56467



website: www.AffinityRealEstate.com | email: info@affinityrealestate.com | office: 218-237-3333 | fax:218-237-3377



\$1,249,900
MLS 6577007 Lake Home
21574 Hedgerow Lane
Nevis MN 56467



website: www.AffinityRealEstate.com | email: info@affinityrealestate.com | office: 218-237-3333 | fax:218-237-3377



\$1,249,900
MLS 6577007 Lake Home
21574 Hedgerow Lane
Nevis MN 56467



website: www.AffinityRealEstate.com | email: info@affinityrealestate.com | office: 218-237-3333 | fax:218-237-3377



\$1,249,900
MLS 6577007 Lake Home
21574 Hedgerow Lane
Nevis MN 56467



website: www.AffinityRealEstate.com | email: info@affinityrealestate.com | office: 218-237-3333 | fax:218-237-3377



\$1,249,900
MLS 6577007 Lake Home
21574 Hedgerow Lane
Nevis MN 56467



website: www.AffinityRealEstate.com | email: info@affinityrealestate.com | office: 218-237-3333 | fax:218-237-3377



\$1,249,900
MLS 6577007 Lake Home
21574 Hedgerow Lane
Nevis MN 56467



website: www.AffinityRealEstate.com | email: info@affinityrealestate.com | office: 218-237-3333 | fax:218-237-3377



\$1,249,900
MLS 6577007 Lake Home
21574 Hedgerow Lane
Nevis MN 56467