



MLS 6577099 Residential

\$149,000

1,152 sq ft
2 bedrooms
0 baths

43514 County Highway 19
Sebeka MN 56477

Status: Active

Description:

This property is located less than 10 miles from Sebeka and Bluffton! Including 8+/- Acres of land and a mostly finished 2022 built 2 bedroom homestead, and two sheds. An 18x24 pole shed with a cement floor, and a 20x30 hoop building with cement pad. 2022 Drilled well. No septic system, no basement, and no electricity currently on the property. Excellent starter home, secondary property, or rental/investment property. Seller will finish siding the property. Also includes a second story loft area. Additional property is available on a separate listing. This property is parcel B on the aerial photo.

Additional Details:


Year Built	2022
Lot Acres	8
Lot Dimensions	8 acres
Garage Stalls	1
School District	820
Taxes	\$1,286
Taxes with Assessments	\$1,286
Tax Year	2024

Additional Features:

Fuel: Wood **Heat:** Wood Stove

Driving Directions:

From Sebeka go west on Co Hwy 8 for 6.3 miles, turn left and head south on Co Hwy 19 for 2.3 miles to the property. South of Bluffton approx. 9 miles on Co Hwy 19.

 Listed By:
Counselor Realty of Detroit Lakes

Affinity Real Estate Inc. participates in the Regional Multiple Listing Service of Minnesota, Inc Broker Reciprocity (sm) program, allowing us to display other broker's listings on our website. All properties are subject to prior sale, change or withdrawal.

 **Call Affinity Real Estate**
218-237-3333
info@affinityrealestate.com

Affinity Real Estate - 600 Park Avenue South - Park Rapids MN 56470



Otter Tail County Web Map

<https://ottertailcountymn.us/>



website: www.AffinityRealEstate.com | email: info@affinityrealestate.com | office: 218-237-3333 | fax: 218-237-3377



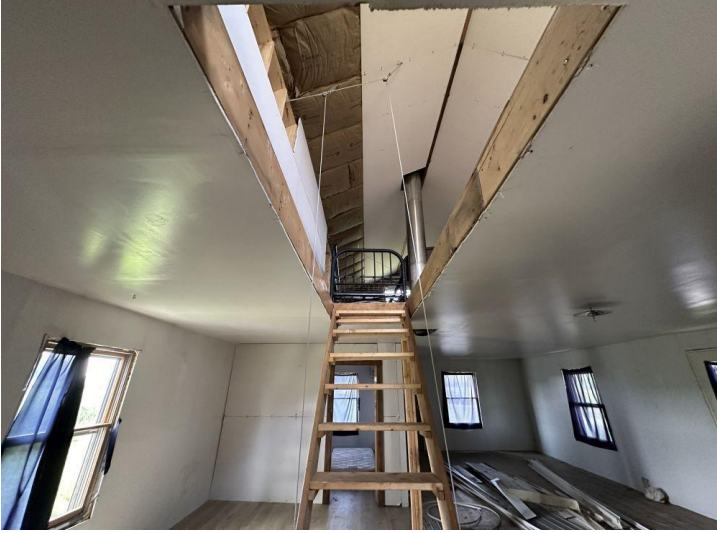
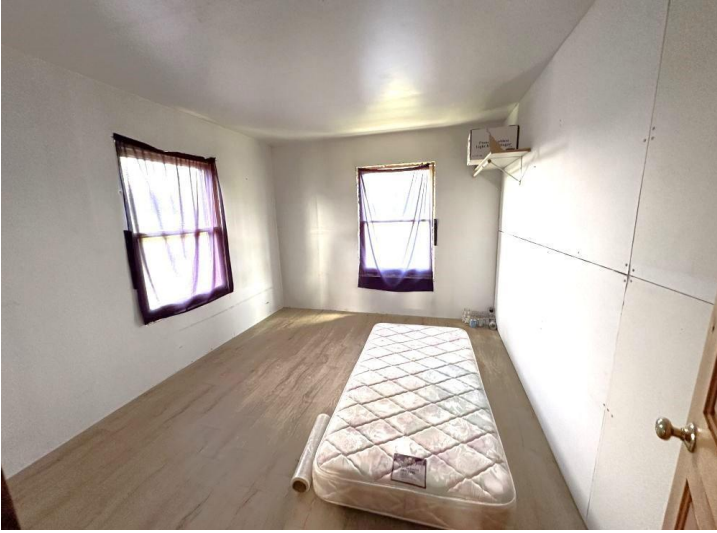
\$149,000
MLS 6577099 Residential
43514 County Highway 19
Sebeka MN 56477



website: www.AffinityRealEstate.com | email: info@affinityrealestate.com | office: 218-237-3333 | fax:218-237-3377



\$149,000
MLS 6577099 Residential
43514 County Highway 19
Sebeka MN 56477



website: www.AffinityRealEstate.com | email: info@affinityrealestate.com | office: 218-237-3333 | fax:218-237-3377



\$149,000
MLS 6577099 Residential
43514 County Highway 19
Sebeka MN 56477