



MLS 6577466 Land

**\$170,000**

43 Acres  
Raw Land

XXXX County Highway 19  
Sebeka MN 56477

Status: Active

**Description:**

43+/- acres of land located less than 10 miles from Sebeka and Bluffton. This is an excellent property for everyone and includes mixed mature trees, a small amount of low land, and approximately 30 acres of nice farmland. This is a great property for mixed uses including farming, hunting, building, or investment!  
Additional farmstead and homestead available bordering this property. See MLS #s 6576778 and 6577099. This is parcel C on the aerial photo.

**Additional Details:**

Lot Acres	43
Lot Dimensions	43+/- acres
School District	820
Taxes	\$3,792
Taxes with Assessments	\$3,792
Tax Year	2024

**Additional Features:**

**Driving Directions:**

From Sebeka go west on Co Hwy 8 for 6.3 miles, turn left and head south on Co Hwy 19 for 2.3 miles to the property. South of Bluffton approx. 9 miles on Co Hwy 19.



Listed By:  
Counselor Realty of Detroit Lakes

Affinity Real Estate Inc. participates in the Regional Multiple Listing Service of Minnesota, Inc Broker Reciprocity (sm) program, allowing us to display other broker's listings on our website. All properties are subject to prior sale, change or withdrawal.



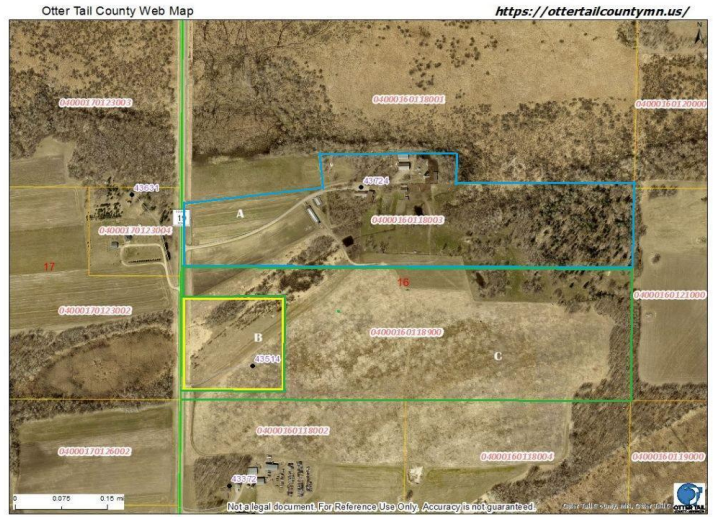
**Call Affinity Real Estate**

**218-237-3333**

**info@affinityrealestate.com**



**Affinity Real Estate - 600 Park Avenue South - Park Rapids MN 56470**



website: [www.AffinityRealEstate.com](http://www.AffinityRealEstate.com) | email: [info@affinityrealestate.com](mailto:info@affinityrealestate.com) | office: 218-237-3333 | fax: 218-237-3377



**\$170,000**  
MLS 6577466 Land  
XXXX County Highway 19  
Sebeka MN 56477



website: [www.AffinityRealEstate.com](http://www.AffinityRealEstate.com) | email: [info@affinityrealestate.com](mailto:info@affinityrealestate.com) | office: 218-237-3333 | fax:218-237-3377

**Affinity**  
REAL ESTATE INC

**\$170,000**  
MLS 6577466 Land  
XXXX County Highway 19  
Sebeka MN 56477



website: [www.AffinityRealEstate.com](http://www.AffinityRealEstate.com) | email: [info@affinityrealestate.com](mailto:info@affinityrealestate.com) | office: 218-237-3333 | fax:218-237-3377



**\$170,000**  
MLS 6577466 Land  
XXXX County Highway 19  
Sebeka MN 56477