



MLS 6577539 Lake Home

\$496,481

1,138 sq ft
2 bedrooms
2 baths

TBD Lake Shore Drive
Bemidji MN 56601

Waterfront: Bemidji (main lake)

Status: Active

Description:

New Pre-Sale prices! Get in early before Sept 12th! Welcome to your dream condominium, where luxury meets tranquility. Gracing the South Shore of Lake Bemidji, this stunning residence boasts breathtaking lake views that can be enjoyed from your private balcony, perfect for morning coffee or enjoying the sunsets. 'The Myrna' is a corner unit located on the second floor, lakeside, and features 2 beds, 2 baths, gas fireplace and an open concept living space adorned with sleek stainless-steel appliances and elegant quartz countertops and window sills. Triple pane windows and soundproof insulation ensure comfort, heat and cooling efficiency and quietude. Additional conveniences include secure assigned indoor parking, additional indoor storage space, and two elevators for effortless access to your home. Experience lakeside living at its finest in this exceptional condominium!

Additional Details:

Year Built	2025
Lot Dimensions	355x256x315x259
Garage Stalls	1
School District	31
Taxes	(unreported)
Taxes with Assessments	(unreported)
Tax Year	2024

Additional Features:

Basement: None **Fuel:** Electric **Garage:** 1 **Heat:** Ductless Mini-Split, Fireplace(s), Heat Pump **Sewer:** City Sewer/Connected **Water:** City Water/Connected **Air Conditioning:** Ductless Mini-Split, Heat Pump

Driving Directions:

Paul Bunyan Dr. S., left on 1st Street, left onto Lake Shore Drive NE. Property is located west of Country Inn and Suites.



Listed By:
Lake-N-Woods Realty

Affinity Real Estate Inc. participates in the Regional Multiple Listing Service of Minnesota, Inc Broker Reciprocity (sm) program, allowing us to display other broker's listings on our website. All properties are subject to prior sale, change or withdrawal.



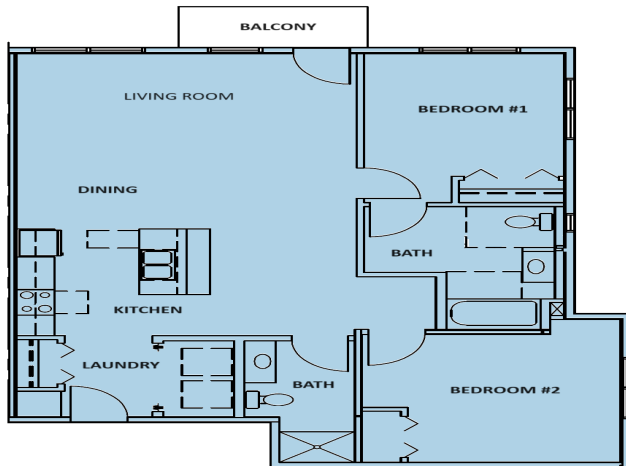
Call Affinity Real Estate

218-237-3333

info@affinityrealestate.com



Affinity Real Estate - 600 Park Avenue South - Park Rapids MN 56470



The Myrna

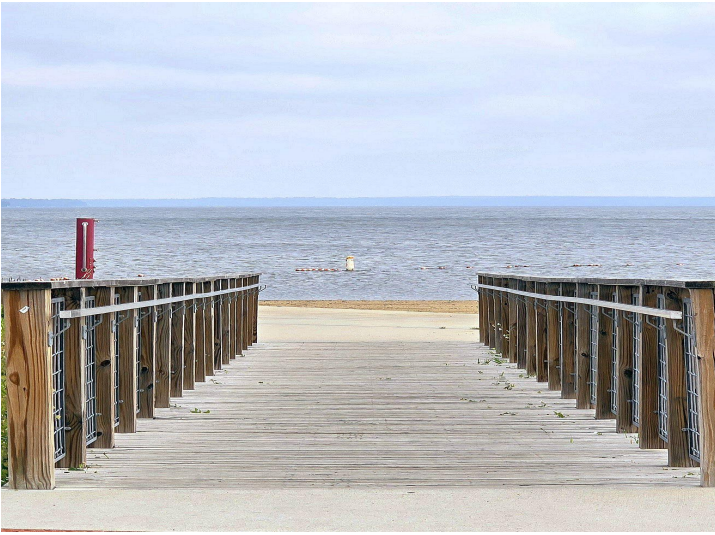


website: www.AffinityRealEstate.com | email: info@affinityrealestate.com | office: 218-237-3333 | fax: 218-237-3377



\$496,481

MLS 6577539 Lake Home
TBD Lake Shore Drive
Bemidji MN 56601



website: www.AffinityRealEstate.com | email: info@affinityrealestate.com | office: 218-237-3333 | fax: 218-237-3377



\$496,481
 MLS 6577539 Lake Home
 TBD Lake Shore Drive
 Bemidji MN 56601



website: www.AffinityRealEstate.com | email: info@affinityrealestate.com | office: 218-237-3333 | fax: 218-237-3377



\$496,481

MLS 6577539 Lake Home
TBD Lake Shore Drive
Bemidji MN 56601