



MLS 6577552 Lake Home

**\$533,750**

1,138 sq ft  
2 bedrooms  
2 baths

TBD Lake Shore Drive  
Bemidji MN 56601

Waterfront: Bemidji (main lake)

Status: Active

**Description:**

Pre-sales going on now! Welcome to your dream condominium, where luxury meets tranquility. Gracing the South Shore of Lake Bemidji, this stunning residence boasts breathtaking lake views that can be enjoyed from your private balcony, perfect for morning coffee or enjoying the sunsets. 'The Myrna' is a corner unit located on the first floor, lakeside, and features 2 beds, 2 baths, an open concept living space adorned with sleek stainless-steel appliances and elegant quartz countertops and window sills. Triple pane windows and soundproof insulation ensure comfort, heat and cooling efficiency and quietude. Additional conveniences include secure assigned indoor parking, additional indoor storage space, and two elevators for effortless access to your home.

Experience lakeside living at its finest in this exceptional condominium!

**Additional Details:**

Year Built	2025
Lot Dimensions	355x256x315x259
Garage Stalls	1
School District	31
Taxes	(unreported)
Taxes with Assessments	(unreported)
Tax Year	2024

**Additional Features:**

**Basement:** None **Fuel:** Electric **Garage:** 1 **Heat:** Ductless Mini-Split, Heat Pump **Sewer:** City Sewer/Connected **Water:** City Water/Connected  
**Air Conditioning:** Ductless Mini-Split, Heat Pump

**Driving Directions:**

Paul Bunyan Dr. S., left on 1st Street, left onto Lake Shore Drive NE. Property is located west of Country Inn and Suites.



Listed By:  
Lake-N-Woods Realty

Affinity Real Estate Inc. participates in the Regional Multiple Listing Service of Minnesota, Inc Broker Reciprocity (sm) program, allowing us to display other broker's listings on our website. All properties are subject to prior sale, change or withdrawal.



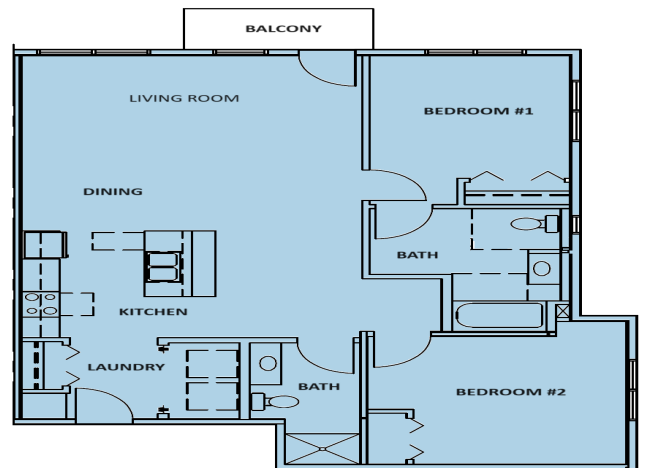
**Call Affinity Real Estate**

**218-237-3333**

**info@affinityrealestate.com**



**Affinity Real Estate - 600 Park Avenue South - Park Rapids MN 56470**



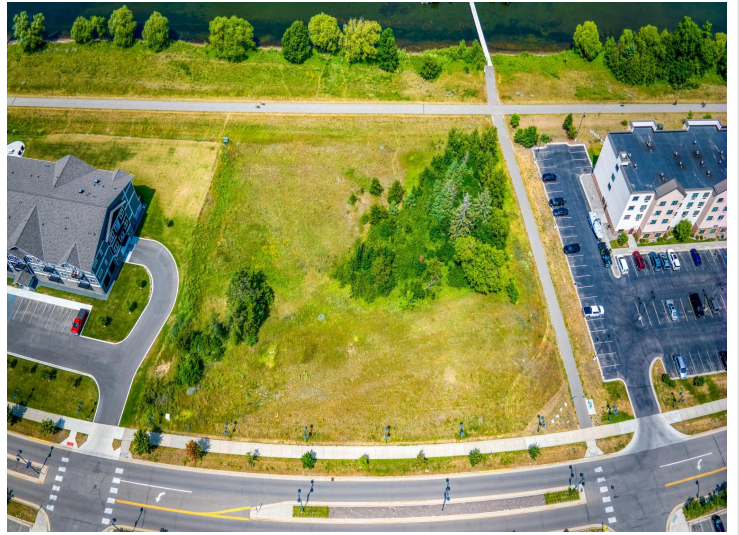
**The Myrna**



website: [www.AffinityRealEstate.com](http://www.AffinityRealEstate.com) | email: [info@affinityrealestate.com](mailto:info@affinityrealestate.com) | office: 218-237-3333 | fax: 218-237-3377



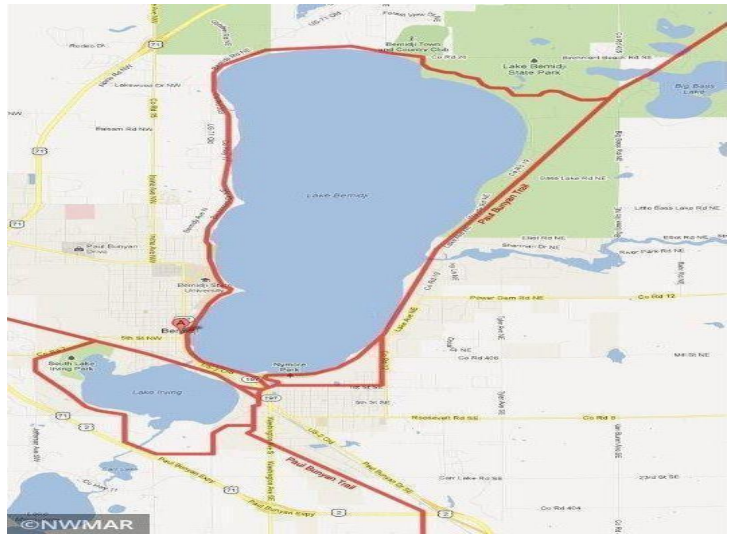
**\$533,750**  
 MLS 6577552 Lake Home  
 TBD Lake Shore Drive  
 Bemidji MN 56601



website: [www.AffinityRealEstate.com](http://www.AffinityRealEstate.com) | email: [info@affinityrealestate.com](mailto:info@affinityrealestate.com) | office: 218-237-3333 | fax:218-237-3377



**\$533,750**  
MLS 6577552 Lake Home  
TBD Lake Shore Drive  
Bemidji MN 56601



website: [www.AffinityRealEstate.com](http://www.AffinityRealEstate.com) | email: [info@affinityrealestate.com](mailto:info@affinityrealestate.com) | office: 218-237-3333 | fax:218-237-3377



**\$533,750**  
MLS 6577552 Lake Home  
TBD Lake Shore Drive  
Bemidji MN 56601