



MLS 6577845 Residential

\$65,000

1,446 sq ft
4 bedrooms
2 baths

144 Delcasse Street
Shevlin MN 56676

Status: Hold

Description:

Nestled on a nice sized lot with convenient access to Hwy 2, this 4-bedroom, 2-bathroom fixer-upper is brimming with potential. Offered as-is, it presents an opportunity for those looking to put their personal touch on a home with great bones or as an investment property. The spacious layout features a primary bedroom on the main floor with a smaller bedroom or office space, along with 2 bedrooms upstairs. One bathroom on each floor offers convenience and ease of living.

The property boasts a double stall garage and an extra barn on the lot offers even more versatility – use it as a workshop, art studio, or storage space; the possibilities are endless. A new furnace was installed in 2021 with a 10 year warranty good until 2031.

The deep lot extending behind the home offers plenty of space for outdoor activities, gardening, or simply enjoying the tranquility of your backyard. With a bit of vision and some TLC, this property is transformable into your perfect home, combining modern living with the charm of a countryside retreat. Don't miss this chance to create your ideal living space on this charming lot."

Additional Details:

Year Built	1920
Lot Acres	0.78
Lot Dimensions	99x337
Garage Stalls	2
School District	2311
Taxes	\$942
Taxes with Assessments	\$942
Tax Year	2024

Additional Features:

Basement: Partial, Sump Pump, Unfinished **Fuel:** Oil **Garage:** 2 **Heat:** Forced Air **Sewer:** Mound Septic, Private Sewer **Water:** Private, Well **Air Conditioning:** None

Driving Directions:

From Hwy 2 W turn right on Main St to Delcasse St. Left on Delcasse St to 144 Delcasse St.



Listed By:
Better Homes and Gardens Real Estate First Choice

Affinity Real Estate Inc. participates in the Regional Multiple Listing Service of Minnesota, Inc Broker Reciprocity (sm) program, allowing us to display other broker's listings on our website. All properties are subject to prior sale, change or withdrawal.



Call Affinity Real Estate

218-237-3333

info@affinityrealestate.com



Affinity Real Estate - 600 Park Avenue South - Park Rapids MN 56470



website: www.AffinityRealEstate.com | email: info@affinityrealestate.com | office: 218-237-3333 | fax:218-237-3377

Affinity
REAL ESTATE INC

\$65,000
MLS 6577845 Residential
144 Delcasse Street
Shevlin MN 56676



website: www.AffinityRealEstate.com | email: info@affinityrealestate.com | office: 218-237-3333 | fax:218-237-3377

Affinity
REAL ESTATE INC

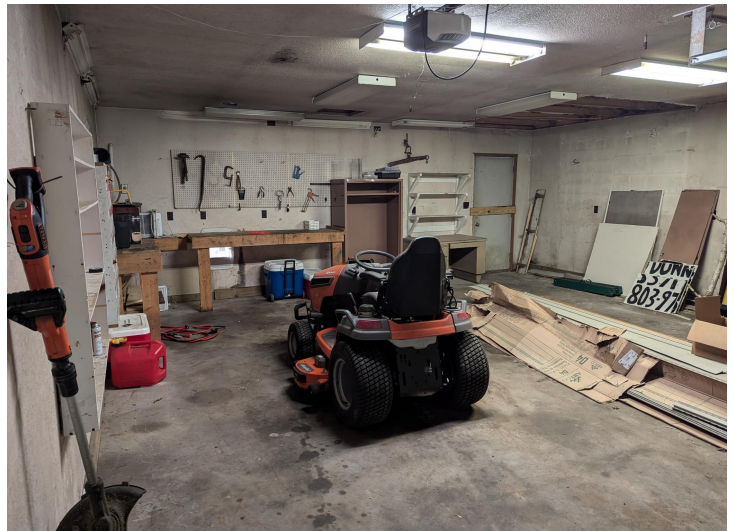
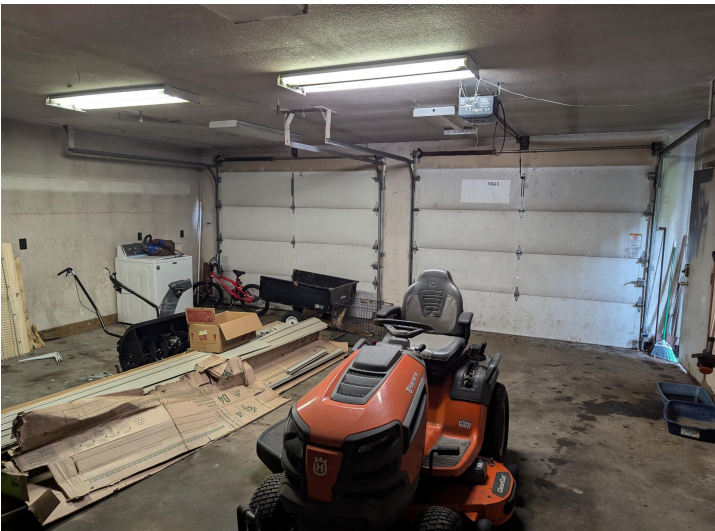
\$65,000
MLS 6577845 Residential
144 Delcasse Street
Shevlin MN 56676



website: www.AffinityRealEstate.com | email: info@affinityrealestate.com | office: 218-237-3333 | fax:218-237-3377

Affinity
REAL ESTATE INC

\$65,000
MLS 6577845 Residential
144 Delcasse Street
Shevlin MN 56676



website: www.AffinityRealEstate.com | email: info@affinityrealestate.com | office: 218-237-3333 | fax:218-237-3377



\$65,000
MLS 6577845 Residential
144 Delcasse Street
Shevlin MN 56676



website: www.AffinityRealEstate.com | email: info@affinityrealestate.com | office: 218-237-3333 | fax:218-237-3377

Affinity
REAL ESTATE INC

\$65,000
MLS 6577845 Residential
144 Delcasse Street
Shevlin MN 56676



website: www.AffinityRealEstate.com | email: info@affinityrealestate.com | office: 218-237-3333 | fax:218-237-3377



\$65,000
MLS 6577845 Residential
144 Delcasse Street
Shevlin MN 56676