



MLS 6578054 Residential

**\$185,000**

1,680 sq ft  
3 bedrooms  
1 baths

26809 County Road 26  
Sebeka MN 56477

Status: Hold

**Description:**

Escape to the country! Whether you're looking for privacy or a little acreage to hunt, this property is in an excellent area well known for some dandy bucks, a good number of quality bears, and abundant turkey and grouse. The 37± acres is a nice diversity with a lot of mature pines and oaks, along with trails and dense cover. There's plenty of room to store all your toys and machinery in the 1200 sq. ft shop as well. The 3 bed/1 bath home on the property is suitable for year-round use and has a lot of potential with some TLC. If you love the outdoors, the Crow Wing River is right down the road and is excellent for kayaking, canoeing and tubing! Home is being sold "as-is."

**Additional Details:**

Year Built	1996
Lot Acres	37.28
Lot Dimensions	irregular
Garage Stalls	4
School District	820
Taxes	\$1,446
Taxes with Assessments	\$1,446
Tax Year	2024

**Additional Features:**

**Basement:** Block **Fuel:** Oil **Garage:** 4 **Heat:** Forced Air **Sewer:** Tank with Drainage Field **Water:** Submersible - 4 Inch, Drilled **Air Conditioning:** Window Unit(s)

**Driving Directions:**

From Nimrod, go South on Co Rd 26 for 2 miles.



Listed By:  
Whitetail Properties Real Estate

Affinity Real Estate Inc. participates in the Regional Multiple Listing Service of Minnesota, Inc Broker Reciprocity (sm) program, allowing us to display other broker's listings on our website. All properties are subject to prior sale, change or withdrawal.



**Call Affinity Real Estate**

**218-237-3333**

**info@affinityrealestate.com**



**Affinity Real Estate - 600 Park Avenue South - Park Rapids MN 56470**





website: [www.AffinityRealEstate.com](http://www.AffinityRealEstate.com) | email: [info@affinityrealestate.com](mailto:info@affinityrealestate.com) | office: 218-237-3333 | fax:218-237-3377



**\$185,000**  
MLS 6578054 Residential  
26809 County Road 26  
Sebeka MN 56477





website: [www.AffinityRealEstate.com](http://www.AffinityRealEstate.com) | email: [info@affinityrealestate.com](mailto:info@affinityrealestate.com) | office: 218-237-3333 | fax:218-237-3377



**\$185,000**  
MLS 6578054 Residential  
26809 County Road 26  
Sebeka MN 56477



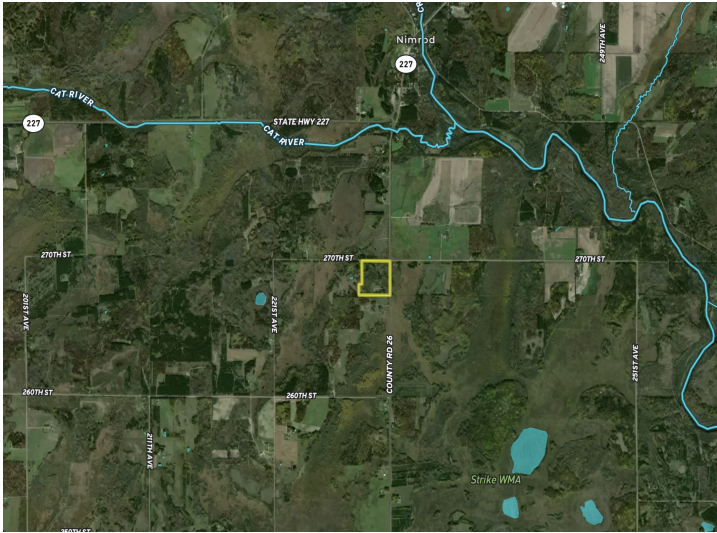


website: [www.AffinityRealEstate.com](http://www.AffinityRealEstate.com) | email: [info@affinityrealestate.com](mailto:info@affinityrealestate.com) | office: 218-237-3333 | fax:218-237-3377



**\$185,000**  
MLS 6578054 Residential  
26809 County Road 26  
Sebeka MN 56477





website: [www.AffinityRealEstate.com](http://www.AffinityRealEstate.com) | email: [info@affinityrealestate.com](mailto:info@affinityrealestate.com) | office: 218-237-3333 | fax:218-237-3377



**\$185,000**  
MLS 6578054 Residential  
26809 County Road 26  
Sebeka MN 56477