



MLS 6578500 Residential

**\$334,900**

0 sq ft  
2 bedrooms  
2 baths

Lot 4 Block 1 Summerset Court  
Pequot Lakes MN 56472

Status: Hold

#### Description:

Discover premium built customized storage buildings in the heart of the Whitefish Chain, perfect for storage, workshops, and optional living quarters. Choose from multiple sizes and customize interiors to suit your needs. This unit includes a roughed-in +1200 sqft living quarters, is built with insulated concrete footings and floors, 2x6 16" O.C. walls. The shop has R21 insulated walls and R50 ceilings with Drywall. Interior and exterior LED lighting, 200 amp electric panel, and 2- 5 speed ceiling fans. 45-year warranty steel siding, these buildings feature a limited lifetime shingled roof with 2ft overhang soffit and a 12" energy heal, seamless gutters, sidewalk, and a 16x14 garage door with R18 insulation and opener. Each unit includes a 3/4 rough-in bathroom, floor drain, 1500-gallon holding tank and drain field, and has a 125,000 BYU natural gas furnace. Option for fiber optics. HOA-maintained common well, roads, snow removal, and lawn care ensure hassle-free living. Professional landscaping adds to the appeal. Enjoy a durable, customizable building in a prime location. Contact us today!

#### Additional Details:

Year Built	2024
Lot Acres	5.74
Lot Dimensions	80x125
Garage Stalls	6
School District	186
Taxes	\$250
Taxes with Assessments	(unreported)
Tax Year	2024

#### Additional Features:

**Basement:** None **Fuel:** Natural Gas **Garage:** 6 **Heat:** Forced Air **Sewer:** Tank with Drainage Field **Water:** Shared System, Well **Air Conditioning:** Central Air

#### Driving Directions:

From HWY 371, head East on Cnty Rd 16. 8.5 miles take right on to Summerset Court. Or .8 miles East of Ideal Township City Hall.



Listed By:  
Woods to Water Real Estate

Affinity Real Estate Inc. participates in the Regional Multiple Listing Service of Minnesota, Inc Broker Reciprocity (sm) program, allowing us to display other broker's listings on our website. All properties are subject to prior sale, change or withdrawal.



**Call Affinity Real Estate**

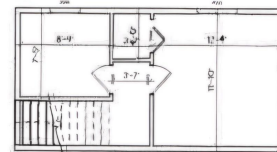
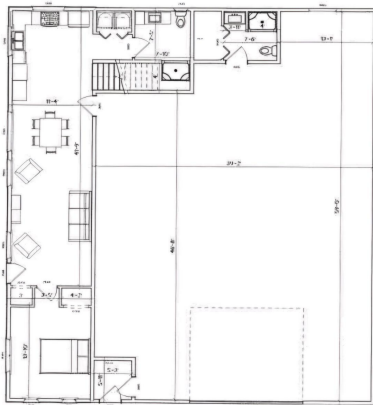
**218-237-3333**

**info@affinityrealestate.com**



**Affinity Real Estate - 600 Park Avenue South - Park Rapids MN 56470**





website: [www.AffinityRealEstate.com](http://www.AffinityRealEstate.com) | email: [info@affinityrealestate.com](mailto:info@affinityrealestate.com) | office: 218-237-3333 | fax: 218-237-3377



**\$334,900**  
 MLS 6578500 Residential  
 Lot 4 Block 1 Summerset  
 Court  
 Pequot Lakes MN 56472





website: [www.AffinityRealEstate.com](http://www.AffinityRealEstate.com) | email: [info@affinityrealestate.com](mailto:info@affinityrealestate.com) | office: 218-237-3333 | fax: 218-237-3377



**\$334,900**  
 MLS 6578500 Residential  
 Lot 4 Block 1 Summerset  
 Court  
 Pequot Lakes MN 56472





website: [www.AffinityRealEstate.com](http://www.AffinityRealEstate.com) | email: [info@affinityrealestate.com](mailto:info@affinityrealestate.com) | office: 218-237-3333 | fax: 218-237-3377



**\$334,900**  
MLS 6578500 Residential  
Lot 4 Block 1 Summerset  
Court  
Pequot Lakes MN 56472