



MLS 6579218 Lake Land

\$54,900

Description:

4th crow wing lake lot ready for your enjoyment. Featuring mature tree coverage, 4.3 acres, and little over 200 ft of frontage on 4th Crow wing Lake. Located just down the road from 3rd and 4th Crow Wing public accesses and a short drive away from public hunting opportunities. Bring your camper or building plans and make this lot your own.

Additional Details:

Lot Acres	4.3
Lot Dimensions	147x697x206x873
School District	308
Taxes	\$368
Taxes with Assessments	\$368
Tax Year	2024

Additional Features:

Driving Directions:

From Hwy 34/71 in Park Rapids: East on Hwy 34 to a right on County 33. Follow to a right on County Rd 13, at the curve turn left onto 174th Street. Take a right on Chokeycherry Drive, at the Y stay to the left, follow to another left to stay on Chokeycherry Dr. Continue to a Right onto Cedar Dr



Listed By:
Wolff & Simon Real Estate

Affinity Real Estate Inc. participates in the Regional Multiple Listing Service of Minnesota, Inc Broker Reciprocity (sm) program, allowing us to display other broker's listings on our website. All properties are subject to prior sale, change or withdrawal.



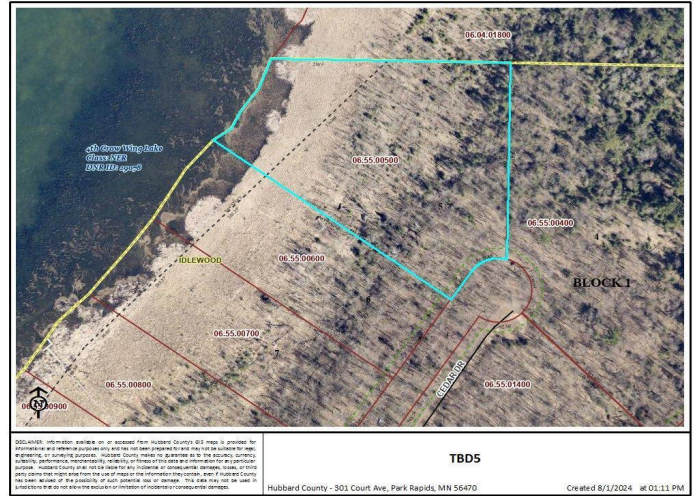
Call Affinity Real Estate

218-237-3333

info@affinityrealestate.com



Affinity Real Estate - 600 Park Avenue South - Park Rapids MN 56470



website: www.AffinityRealEstate.com | email: info@affinityrealestate.com | office: 218-237-3333 | fax:218-237-3377



\$54,900
 MLS 6579218 Lake Land
 TBD5 Cedar Drive
 Nevis MN 56467