



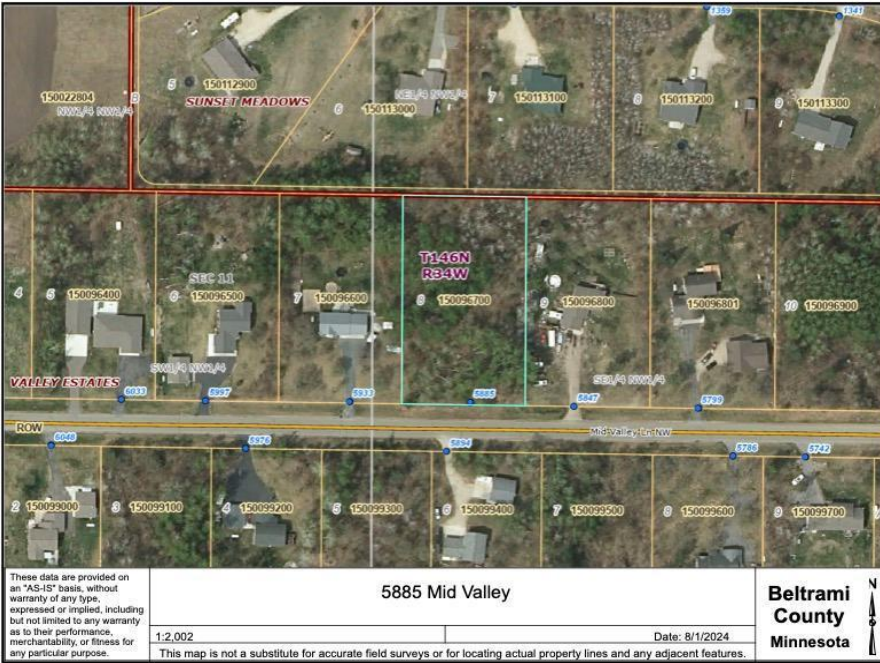
MLS 6579510 Residential

\$270,000

1,220 sq ft
3 bedrooms
2 baths

5885 Mid-Valley Ln NW
Bemidji MN 56601

Status: Active



Description:

You missed this one, but we can have another built just like it! 3 beds, 2 baths, including a primary suite, center kitchen island, storage, forced air heat with Central AC, 2 stall garage that's insulated and heater ready. Enjoy an open concept and one stellar rear patio with solid beam construction! Call today to see this so you can get yours built!

Additional Details:

Year Built	2024
Lot Acres	1.14
Lot Dimensions	170x291
Garage Stalls	2
School District	31
Taxes	\$224
Taxes with Assessments	\$224
Tax Year	2024

Additional Features:

Basement: Slab **Fuel:** Propane **Garage:** 2 **Heat:** Forced Air **Sewer:** Private Sewer, Tank with Drainage Field **Water:** Submersible - 4 Inch, Private, Well **Air Conditioning:** Central Air

Driving Directions:

West on Division, North on Archery, East on Mid-Valley.



Listed By:
Grimes Realty

Affinity Real Estate Inc. participates in the Regional Multiple Listing Service of Minnesota, Inc Broker Reciprocity (sm) program, allowing us to display other broker's listings on our website. All properties are subject to prior sale, change or withdrawal.



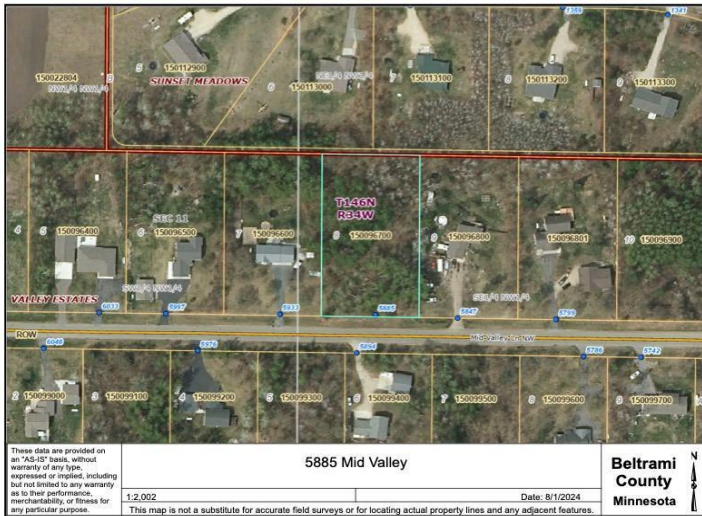
Call Affinity Real Estate

218-237-3333

info@affinityrealestate.com



Affinity Real Estate - 600 Park Avenue South - Park Rapids MN 56470



website: www.AffinityRealEstate.com | email: info@affinityrealestate.com | office: 218-237-3333 | fax: 218-237-3377



\$270,000
 MLS 6579510 Residential
 5885 Mid-Valley Ln NW
 Bemidji MN 56601