



MLS 6579563 Lake Home

**\$289,000**

1,296 sq ft  
3 bedrooms  
2 baths

65405 County Road 174  
Northome MN 56661

Waterfront: Island Lake (Ardenhurst  
Twp.)

Status: Closed

**Description:**

Million dollar view of Island Lake through dining room and living room windows. Fireplace for cozy winter nights. Propane heat. 3 beds 2 bath. Great deck space. 2 car garage. Lots of perennial flowers. Garden shed. Dock and boat lift go with property. Partially furnished. Island Lake is known for great year around fishing walleye, northern pike, perch, bass and more! Located 4 miles from Northome, Mn. with all the small town amenities. Near Atv/Snowmobile trails and public land for hunting. Partially furnished. As Is.

**Additional Details:**

Year Built	1951
Lot Acres	0.77
Lot Dimensions	.77
Garage Stalls	2
School District	318
Taxes	\$1,766
Taxes with Assessments	\$1,766
Tax Year	2023

**Additional Features:**

**Basement:** Crawl Space **Fuel:** Propane, Wood **Garage:** 2 **Heat:** Forced Air **Sewer:** Mound Septic **Water:** Drilled **Air Conditioning:** None

**Driving Directions:**

Follow State Highway 46 to County Road 24 go 1 mile. Turn onto Itasca County Road 174 go .4 miles then follow .6 miles turn at 65405 fire number



Listed By:  
MN DIRECT PROPERTIES

Affinity Real Estate Inc. participates in the Regional Multiple Listing Service of Minnesota, Inc Broker Reciprocity (sm) program, allowing us to display other broker's listings on our website. All properties are subject to prior sale, change or withdrawal.



**Call Affinity Real Estate**

**218-237-3333**

**info@affinityrealestate.com**



**Affinity Real Estate - 600 Park Avenue South - Park Rapids MN 56470**





website: [www.AffinityRealEstate.com](http://www.AffinityRealEstate.com) | email: [info@affinityrealestate.com](mailto:info@affinityrealestate.com) | office: 218-237-3333 | fax: 218-237-3377



**\$289,000**

MLS 6579563 Lake Home  
65405 County Road 174  
Northome MN 56661





website: [www.AffinityRealEstate.com](http://www.AffinityRealEstate.com) | email: [info@affinityrealestate.com](mailto:info@affinityrealestate.com) | office: 218-237-3333 | fax: 218-237-3377

**Affinity**  
REAL ESTATE INC

**\$289,000**  
MLS 6579563 Lake Home  
65405 County Road 174  
Northome MN 56661



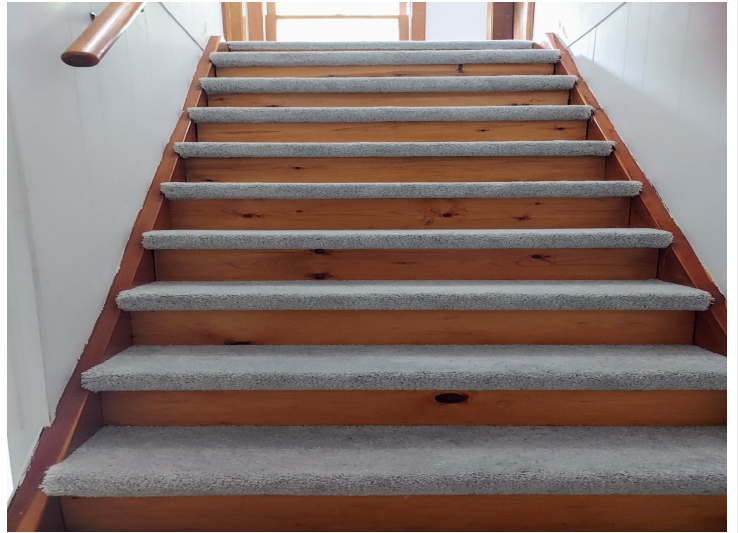


website: [www.AffinityRealEstate.com](http://www.AffinityRealEstate.com) | email: [info@affinityrealestate.com](mailto:info@affinityrealestate.com) | office: 218-237-3333 | fax: 218-237-3377

**Affinity**  
REAL ESTATE INC

**\$289,000**  
MLS 6579563 Lake Home  
65405 County Road 174  
Northome MN 56661





website: [www.AffinityRealEstate.com](http://www.AffinityRealEstate.com) | email: [info@affinityrealestate.com](mailto:info@affinityrealestate.com) | office: 218-237-3333 | fax: 218-237-3377



**\$289,000**  
 MLS 6579563 Lake Home  
 65405 County Road 174  
 Northome MN 56661





website: [www.AffinityRealEstate.com](http://www.AffinityRealEstate.com) | email: [info@affinityrealestate.com](mailto:info@affinityrealestate.com) | office: 218-237-3333 | fax: 218-237-3377

**Affinity**  
REAL ESTATE INC

**\$289,000**

MLS 6579563 Lake Home  
65405 County Road 174  
Northome MN 56661





website: [www.AffinityRealEstate.com](http://www.AffinityRealEstate.com) | email: [info@affinityrealestate.com](mailto:info@affinityrealestate.com) | office: 218-237-3333 | fax:218-237-3377



**\$289,000**

MLS 6579563 Lake Home  
65405 County Road 174  
Northome MN 56661