



MLS 6580055 Land

\$39,900

5.2 Acres
Raw Land

TBD Rifle Range Drive
Laporte MN 56461

Status: Active

Description:

5.2 acres fully wooded with a gorgeous bldg site opened just 5 minutes north of Walker. Parklike setting, nicely private. Bldg site faces southeast overlooking wildlife marsh area. Deer & Turkeys seen often. Camping, RV, no minimum bldg. size, mobile home, all permissible. Sets among 32 acres only split into 4 parcels, no further subdividing permissible so your privacy is maintained.

Additional Details:

Lot Acres	5.2
Lot Dimensions	428x518x411x480
School District	306
Taxes	\$30
Taxes with Assessments	\$30
Tax Year	2024

Additional Features:

Driving Directions:

From Walker, go north on MN-371 for 5.5 miles and turn left onto Cass Co 62. Go 1 mile and turn right onto Rifle Range Dr. Go .1 mile and the property will be on the right.



Listed By:
askRICK.com dba Walker Area Realty

Affinity Real Estate Inc. participates in the Regional Multiple Listing Service of Minnesota, Inc Broker Reciprocity (sm) program, allowing us to display other broker's listings on our website. All properties are subject to prior sale, change or withdrawal.



Call Affinity Real Estate

218-237-3333

info@affinityrealestate.com



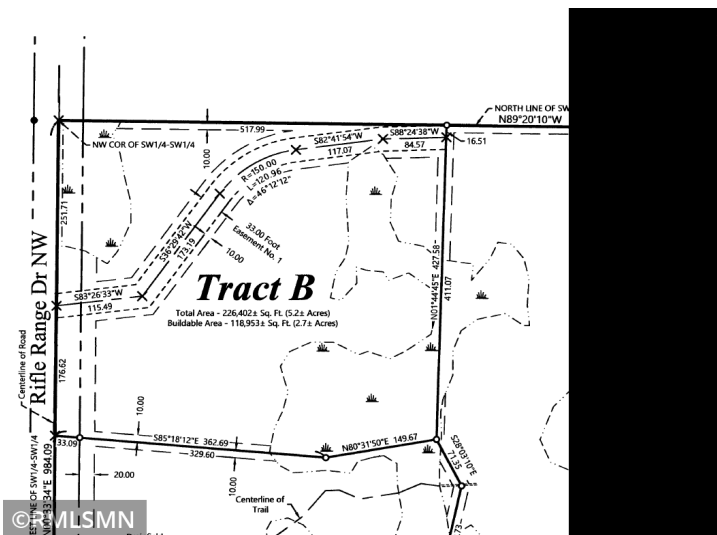
Affinity Real Estate - 600 Park Avenue South - Park Rapids MN 56470



website: www.AffinityRealEstate.com | email: info@affinityrealestate.com | office: 218-237-3333 | fax:218-237-3377



\$39,900
MLS 6580055 Land
TBD Rifle Range Drive
Laporte MN 56461



website: www.AffinityRealEstate.com | email: info@affinityrealestate.com | office: 218-237-3333 | fax: 218-237-3377



\$39,900
MLS 6580055 Land
TBD Rifle Range Drive
Laporte MN 56461