



MLS 6580504 Lake Land

**\$229,000**

**Description:**

Enjoy 104' of frontage on beautiful Upper Hay Lake!! Upper Hay Lake is a 595 acre lake with a max depth of 42' and has a 8' water clarity!! This property is conveniently located in the heart of the lakes country and is located just minutes from restaurants, golf courses, shopping in Pequot Lakes and Nisswa and close to the Paul Bunyan Trail!! This lot features 104' of frontage, mature trees, cleared drive into the property, easy elevation to the lake, sand lake bottom, and south facing views!! Make this the location for your new lake home/cabin!!

**Additional Details:**

Lot Acres	0.65
Lot Dimensions	104x294x100x274
School District	186
Taxes	\$924
Taxes with Assessments	\$924
Tax Year	2024

**Additional Features:**

**Driving Directions:**

North on Hwy #371 to Jenkins, take right on Veterans Street, left on County Road 145, go approximately 2 miles to property on the right. (Just after Fire #4675)



Listed By:  
Edina Realty, Inc.

Affinity Real Estate Inc. participates in the Regional Multiple Listing Service of Minnesota, Inc Broker Reciprocity (sm) program, allowing us to display other broker's listings on our website. All properties are subject to prior sale, change or withdrawal.



**Call Affinity Real Estate**

**218-237-3333**

**info@affinityrealestate.com**



**Affinity Real Estate - 600 Park Avenue South - Park Rapids MN 56470**





website: [www.AffinityRealEstate.com](http://www.AffinityRealEstate.com) | email: [info@affinityrealestate.com](mailto:info@affinityrealestate.com) | office: 218-237-3333 | fax: 218-237-3377



**\$229,000**  
 MLS 6580504 Lake Land  
 Lot 4 Blk 1 County Road 145  
 Pequot Lakes MN 56472





website: [www.AffinityRealEstate.com](http://www.AffinityRealEstate.com) | email: [info@affinityrealestate.com](mailto:info@affinityrealestate.com) | office: 218-237-3333 | fax: 218-237-3377



**\$229,000**  
MLS 6580504 Lake Land  
Lot 4 Blk 1 County Road 145  
Pequot Lakes MN 56472



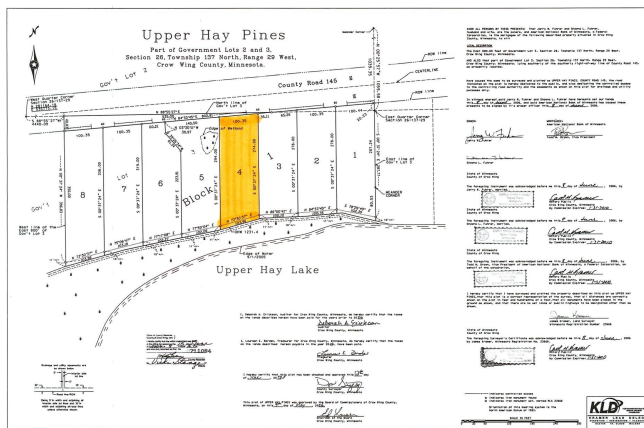


website: [www.AffinityRealEstate.com](http://www.AffinityRealEstate.com) | email: [info@affinityrealestate.com](mailto:info@affinityrealestate.com) | office: 218-237-3333 | fax: 218-237-3377



**\$229,000**  
 MLS 6580504 Lake Land  
 Lot 4 Blk 1 County Road 145  
 Pequot Lakes MN 56472





website: [www.AffinityRealEstate.com](http://www.AffinityRealEstate.com) | email: [info@affinityrealestate.com](mailto:info@affinityrealestate.com) | office: 218-237-3333 | fax: 218-237-3377



**\$229,000**

MLS 6580504 Lake Land  
Lot 4 Blk 1 County Road 145  
Pequot Lakes MN 56472