



MLS 6580749 Land

\$98,000

0.92 Acres
Raw Land

1401 Park Avenue
Park Rapids MN 56470

Status: Active

Description:

Invest or Build: Excellent opportunity to build or expand your business - on nearly a full acre, the possibilities are endless. Conveniently located off Highway 71, this lot will give you great exposure and easy access. Park Rapids is a booming city, and with only a few business/commercial lots available, this would be a great investment. (See supplemental document for more information on the "B-1 Highway Business District," or contact agent for more details.)

Additional Details:

Lot Acres	0.92
Lot Dimensions	200x400
School District	309
Taxes	\$506
Taxes with Assessments	\$2,440
Tax Year	2024

Additional Features:

Driving Directions:

From McDonald's in downtown Park Rapids, head south on Park Ave (71) for 0.9 miles to property.



Listed By:
Whitetail Properties Real Estate

Affinity Real Estate Inc. participates in the Regional Multiple Listing Service of Minnesota, Inc Broker Reciprocity (sm) program, allowing us to display other broker's listings on our website. All properties are subject to prior sale, change or withdrawal.



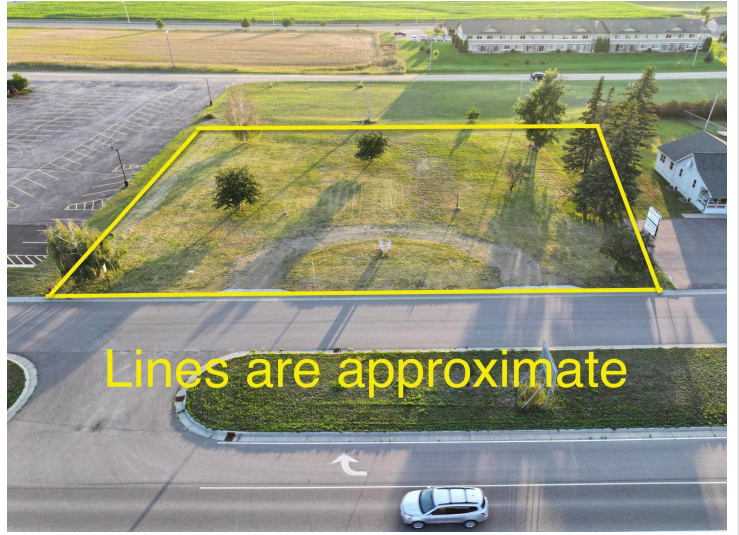
Call Affinity Real Estate

218-237-3333

info@affinityrealestate.com



Affinity Real Estate - 600 Park Avenue South - Park Rapids MN 56470



website: www.AffinityRealEstate.com | email: info@affinityrealestate.com | office: 218-237-3333 | fax:218-237-3377



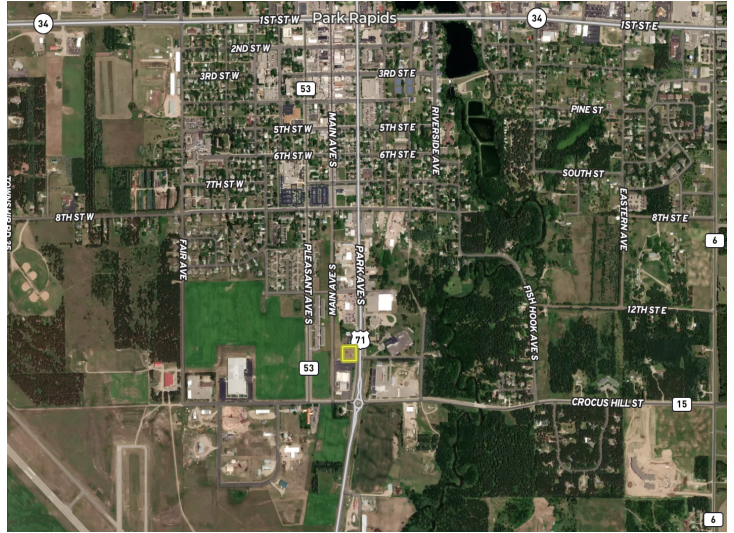
\$98,000
MLS 6580749 Land
1401 Park Avenue
Park Rapids MN 56470



website: www.AffinityRealEstate.com | email: info@affinityrealestate.com | office: 218-237-3333 | fax:218-237-3377



\$98,000
MLS 6580749 Land
1401 Park Avenue
Park Rapids MN 56470



website: www.AffinityRealEstate.com | email: info@affinityrealestate.com | office: 218-237-3333 | fax:218-237-3377



\$98,000
 MLS 6580749 Land
 1401 Park Avenue
 Park Rapids MN 56470