



MLS 6580896 Land

**\$82,500**

10.16 Acres  
Raw Land

Tbd\* 30th Avenue  
Pine River MN 56474

Status: Hold

**Description:**

10 Acres of heavily wooded and fenced land with a mix of mature trees and ideal for multiple building sites with the options for animals, hunting or building a retreat.

**Additional Details:**

Lot Acres	10.16
Lot Dimensions	660x660
School District	2174
Taxes	\$212
Taxes with Assessments	\$212
Tax Year	2024

**Additional Features:**

**Driving Directions:**

From 371 in Pine River, go 2 miles west on Hwy 2 (24th Street), turn right (N) on 32nd Avenue NW, continue .6 miles to 22nd street, turn right (W) to 30th Avenue SW, then .1 mile to property on left at gate.



Listed By:  
Heartland Real Estate

Affinity Real Estate Inc. participates in the Regional Multiple Listing Service of Minnesota, Inc Broker Reciprocity (sm) program, allowing us to display other broker's listings on our website. All properties are subject to prior sale, change or withdrawal.



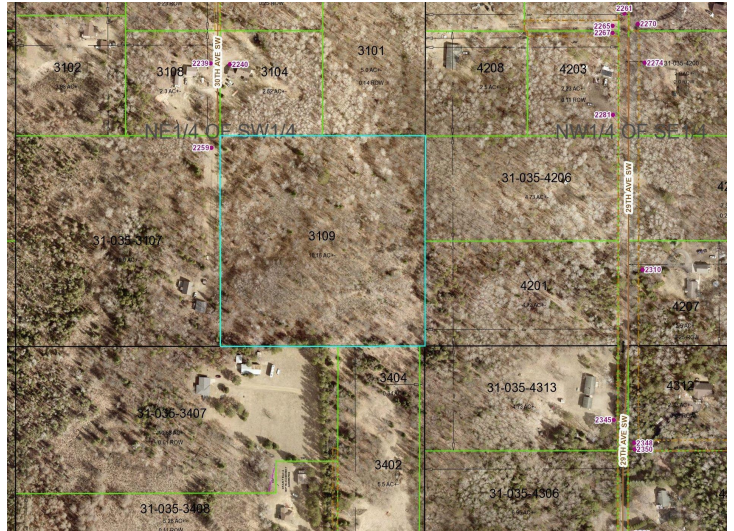
Call Affinity Real Estate

**218-237-3333**

[info@affinityrealestate.com](mailto:info@affinityrealestate.com)



Affinity Real Estate - 600 Park Avenue South - Park Rapids MN 56470



website: [www.AffinityRealEstate.com](http://www.AffinityRealEstate.com) | email: [info@affinityrealestate.com](mailto:info@affinityrealestate.com) | office: 218-237-3333 | fax:218-237-3377



**\$82,500**  
MLS 6580896 Land  
Tbd\* 30th Avenue  
Pine River MN 56474