



MLS 6580992 Residential

\$283,000

1,456 sq ft
3 bedrooms
2 baths

5134 Grant Valley Road
Bemidji MN 56601

Status: Active

Description:

Wonderful ranch styled home located in the SUNSET MEADOWS subdivision. Home features a spacious 3 bed 2 baths with a great size living area. Lovely kitchen with dining area, view to living room. Cozy home and over an acre! Fenced area in backyard.

Additional Details:

Year Built	2008
Lot Acres	1.14
Lot Dimensions	332 x 151
Garage Stalls	2
School District	31
Taxes	\$2,086
Taxes with Assessments	\$2,086
Tax Year	2023

Additional Features:

Fuel: Electric, Propane **Heat:** Forced Air

Driving Directions:

Continue on Archery Rd NW. Drive to Grant Valley Rd NW Turn left onto Archery Rd NW Turn right onto Grant Valley Rd NW Destination will be on the right



Listed By:
BEX Realty, LLC

Affinity Real Estate Inc. participates in the Regional Multiple Listing Service of Minnesota, Inc Broker Reciprocity (sm) program, allowing us to display other broker's listings on our website. All properties are subject to prior sale, change or withdrawal.



Call Affinity Real Estate

218-237-3333

info@affinityrealestate.com



Affinity Real Estate - 600 Park Avenue South - Park Rapids MN 56470



website: www.AffinityRealEstate.com | email: info@affinityrealestate.com | office: 218-237-3333 | fax:218-237-3377



\$283,000
MLS 6580992 Residential
5134 Grant Valley Road
Bemidji MN 56601



website: www.AffinityRealEstate.com | email: info@affinityrealestate.com | office: 218-237-3333 | fax:218-237-3377

Affinity
REAL ESTATE INC

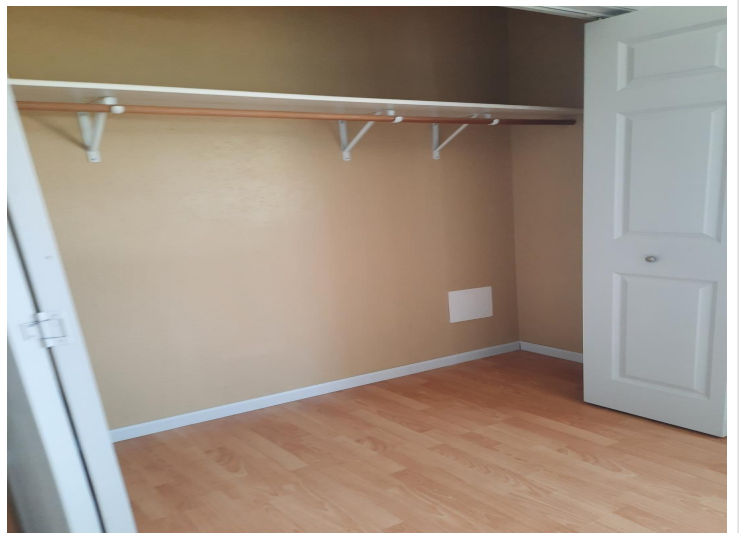
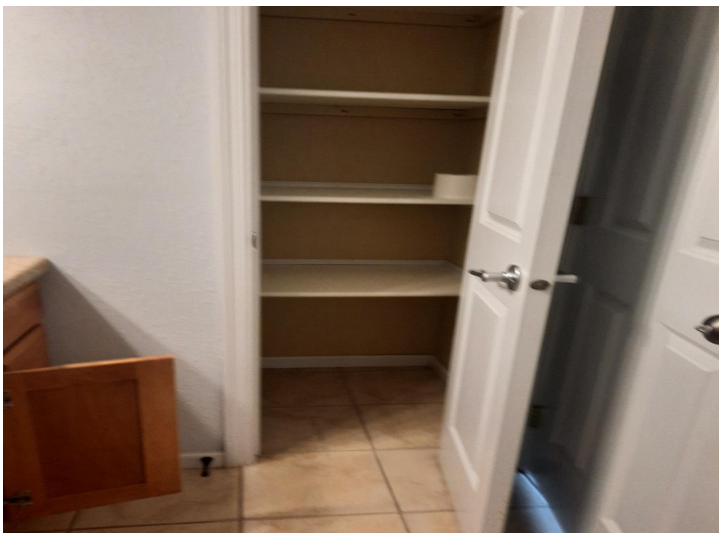
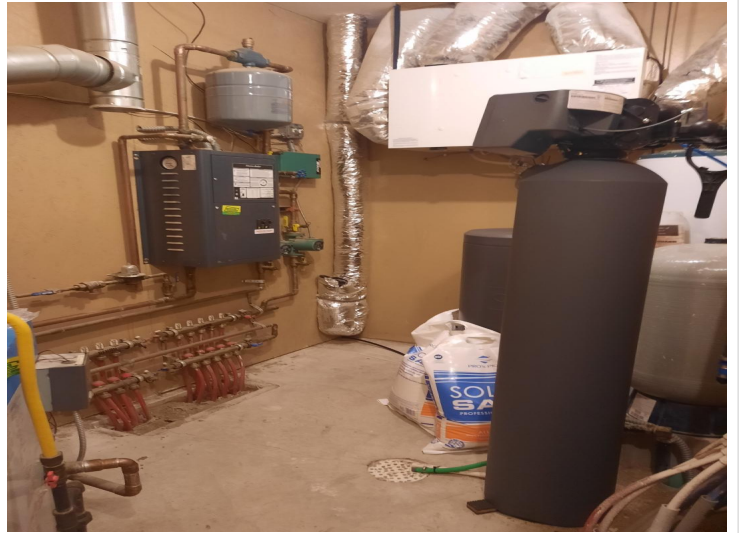
\$283,000
MLS 6580992 Residential
5134 Grant Valley Road
Bemidji MN 56601



website: www.AffinityRealEstate.com | email: info@affinityrealestate.com | office: 218-237-3333 | fax:218-237-3377

Affinity
REAL ESTATE INC

\$283,000
MLS 6580992 Residential
5134 Grant Valley Road
Bemidji MN 56601



website: www.AffinityRealEstate.com | email: info@affinityrealestate.com | office: 218-237-3333 | fax:218-237-3377



\$283,000
MLS 6580992 Residential
5134 Grant Valley Road
Bemidji MN 56601



website: www.AffinityRealEstate.com | email: info@affinityrealestate.com | office: 218-237-3333 | fax:218-237-3377



\$283,000
MLS 6580992 Residential
5134 Grant Valley Road
Bemidji MN 56601