



MLS 6581427 Lake Land

\$695,000



Description:

Build your dream lake home on one of the last undeveloped large parcels on Kimball Lake! This lot has that private setting you have been looking for as it boasts 404 feet of sand frontage, 6.25 wooded acres and stunning lake views. Enjoy boating, excellent fishing, swimming and all that the pristine Kimball Lake has to offer. Property is located right in the heart of Ideal Township so it will be minutes from all the amenities that Crosslake and Pequot Lakes has to offer. Amenities includes great restaurants, various retail shops and premier golf courses. This property has two separate parcel numbers and two separate owners, but is being sold as one property. Don't miss out on the opportunity to have you own private retreat on the beautiful shores of Kimble Lake!

Additional Details:

| | |
|------------------------|-----------------------|
| Lot Acres | 6.25 |
| Lot Dimensions | 404 x 490 x 464 x 887 |
| School District | 186 |
| Taxes | \$3,154 |
| Taxes with Assessments | \$3,404 |
| Tax Year | 2024 |

Additional Features:

Driving Directions:

From the intersection of County Road 16 and County Road 39 in Ideal Township take County Road 39, go 1.4 miles, turn right onto Strawberry Lake Road, go 1.3 miles which will take you almost to the end of the road and the lot will be on your right.



Listed By:
Larson Group Real Estate/Kelle

Affinity Real Estate Inc. participates in the Regional Multiple Listing Service of Minnesota, Inc Broker Reciprocity (sm) program, allowing us to display other broker's listings on our website. All properties are subject to prior sale, change or withdrawal.



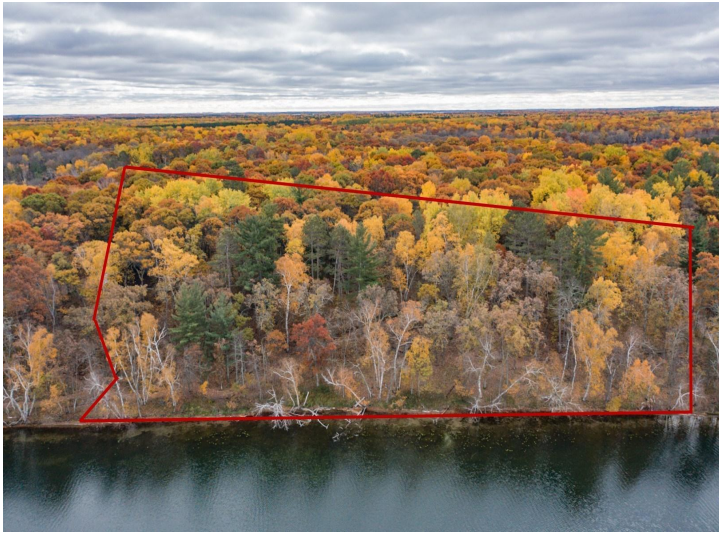
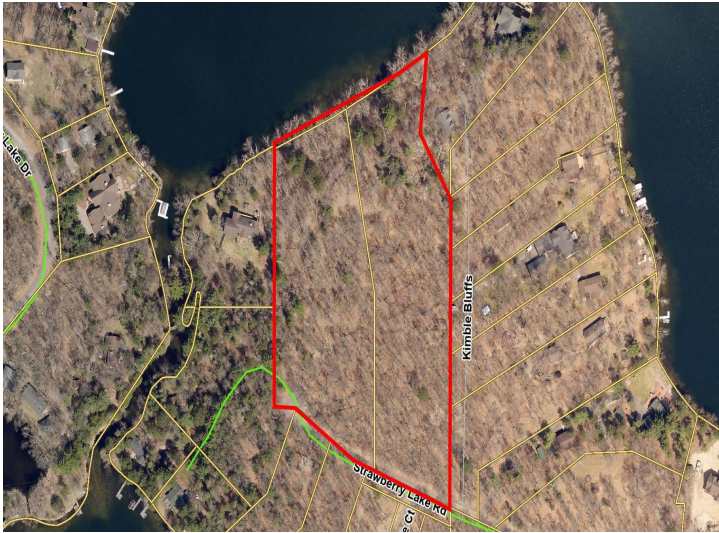
Call Affinity Real Estate

218-237-3333

info@affinityrealestate.com



Affinity Real Estate - 600 Park Avenue South - Park Rapids MN 56470



website: www.AffinityRealEstate.com | email: info@affinityrealestate.com | office: 218-237-3333 | fax: 218-237-3377



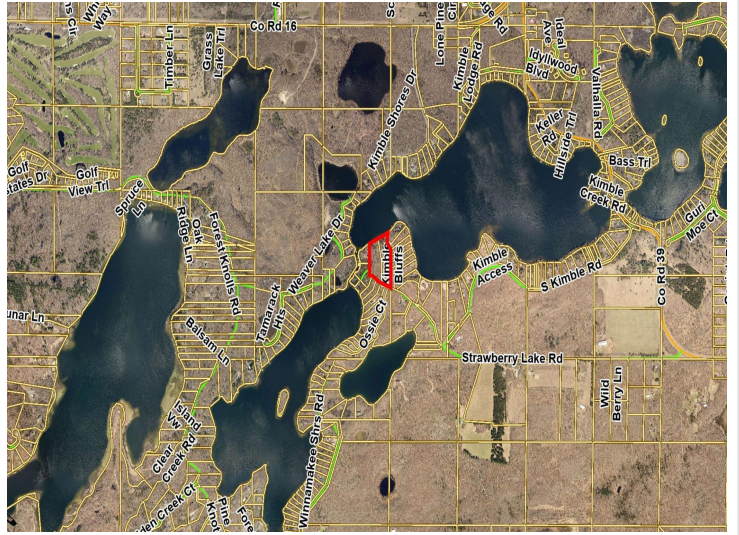
\$695,000
MLS 6581427 Lake Land
TBD Strawberry Lake Road
Pequot Lakes MN 56472



website: www.AffinityRealEstate.com | email: info@affinityrealestate.com | office: 218-237-3333 | fax:218-237-3377



\$695,000
MLS 6581427 Lake Land
TBD Strawberry Lake Road
Pequot Lakes MN 56472



website: www.AffinityRealEstate.com | email: info@affinityrealestate.com | office: 218-237-3333 | fax:218-237-3377



\$695,000
MLS 6581427 Lake Land
TBD Strawberry Lake Road
Pequot Lakes MN 56472