



MLS 6581443 Lake Land

\$1,695,000

Description:

A RARE FIND on the shores of the Prestigious Whitefish Chain! This exceptional vacant lot offers 150' of level elevation with pristine shoreline...truly one of the nicest parcels of land to ever be offered on the entire chain of lakes. This premier site presents a fantastic opportunity to build your new Up-North private dream retreat...featuring gorgeous west-facing exposure for breathtaking year-round SUNSETS, an excellent hard sand beach perfect for swimming, boating and just relaxing in the sun. There is also a drilled well, storage shed and dock included. Don't miss this chance to own a piece of paradise on the coveted Whitefish Chain of Lakes—your oasis awaits!

Additional Details:

Lot Acres	1.29
Lot Dimensions	151 x 352 x 150 x 359
School District	2174
Taxes	\$5,068
Taxes with Assessments	\$5,068
Tax Year	2024

Additional Features:

Driving Directions:

FROM JENKINS, JCT. OF 15 & 371, GO EAST ON 15 FOR 6.8 MILES TO, RIGHT ON CTY. RD. 1 FOR 5.3 MILES TO, RIGHT ON CTY RD. 134 FOR 3.8 ON LEFT.



Listed By:
Kurilla Real Estate LTD

Affinity Real Estate Inc. participates in the Regional Multiple Listing Service of Minnesota, Inc Broker Reciprocity (sm) program, allowing us to display other broker's listings on our website. All properties are subject to prior sale, change or withdrawal.



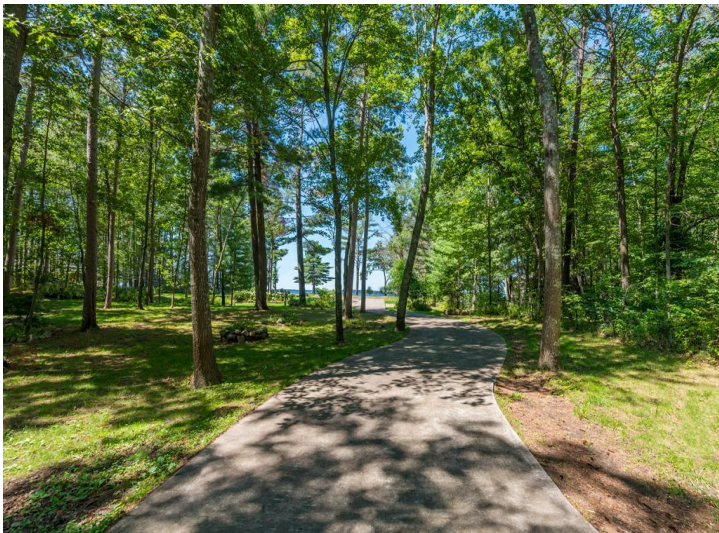
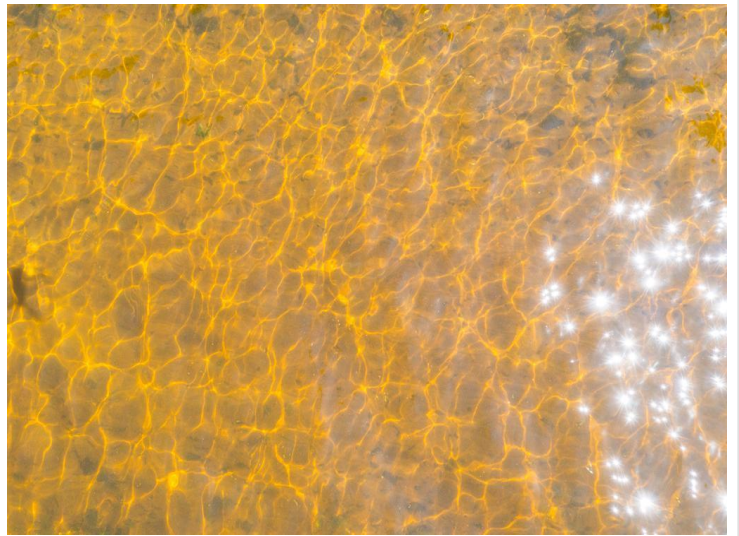
Call Affinity Real Estate

218-237-3333

info@affinityrealestate.com



Affinity Real Estate - 600 Park Avenue South - Park Rapids MN 56470



website: www.AffinityRealEstate.com | email: info@affinityrealestate.com | office: 218-237-3333 | fax:218-237-3377



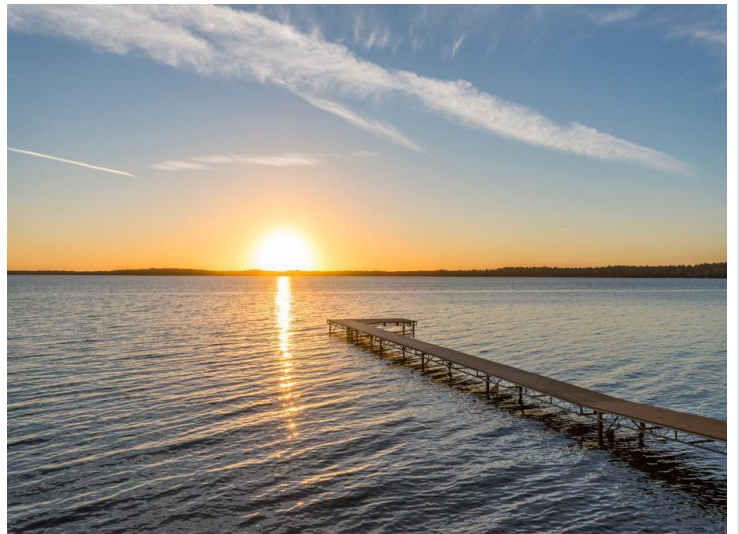
\$1,695,000
MLS 6581443 Lake Land
8559 Sunset Shores
Pine River MN 56474



website: www.AffinityRealEstate.com | email: info@affinityrealestate.com | office: 218-237-3333 | fax:218-237-3377



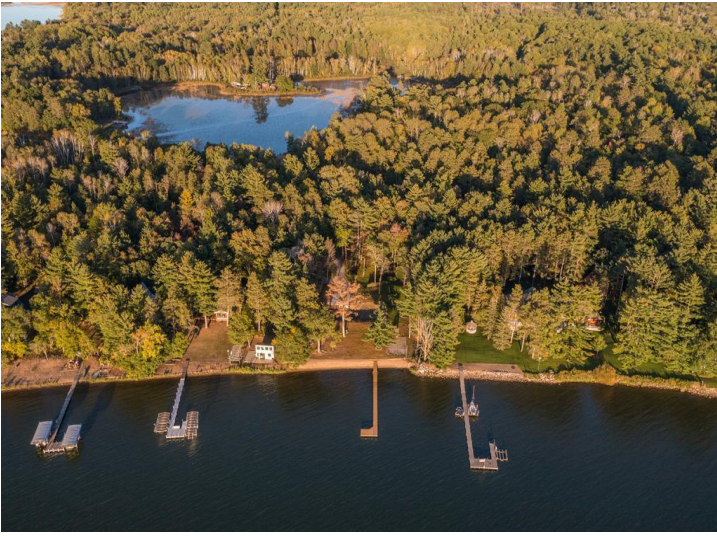
\$1,695,000
MLS 6581443 Lake Land
8559 Sunset Shores
Pine River MN 56474



website: www.AffinityRealEstate.com | email: info@affinityrealestate.com | office: 218-237-3333 | fax:218-237-3377



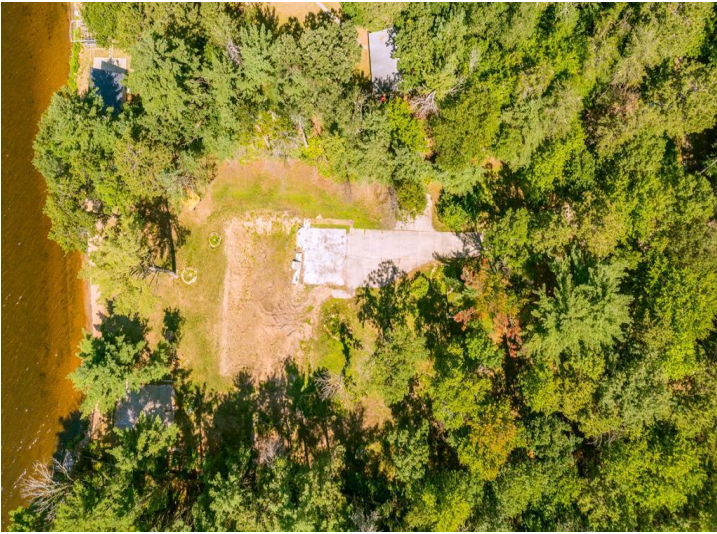
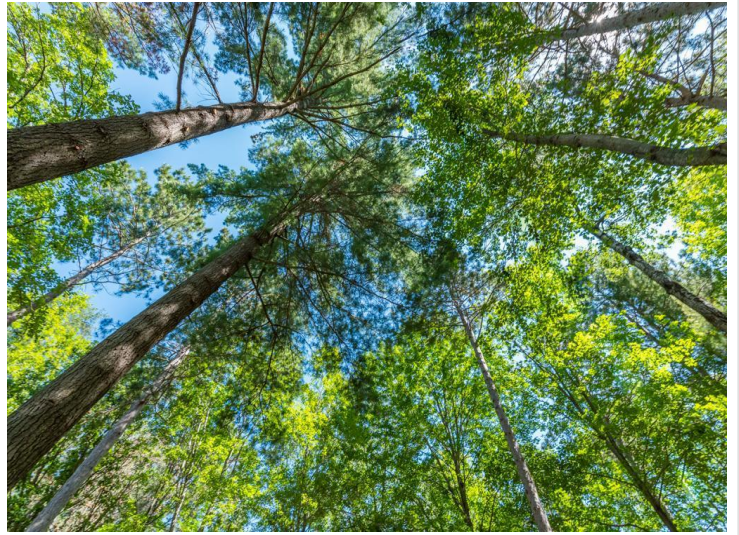
\$1,695,000
MLS 6581443 Lake Land
8559 Sunset Shores
Pine River MN 56474



website: www.AffinityRealEstate.com | email: info@affinityrealestate.com | office: 218-237-3333 | fax:218-237-3377



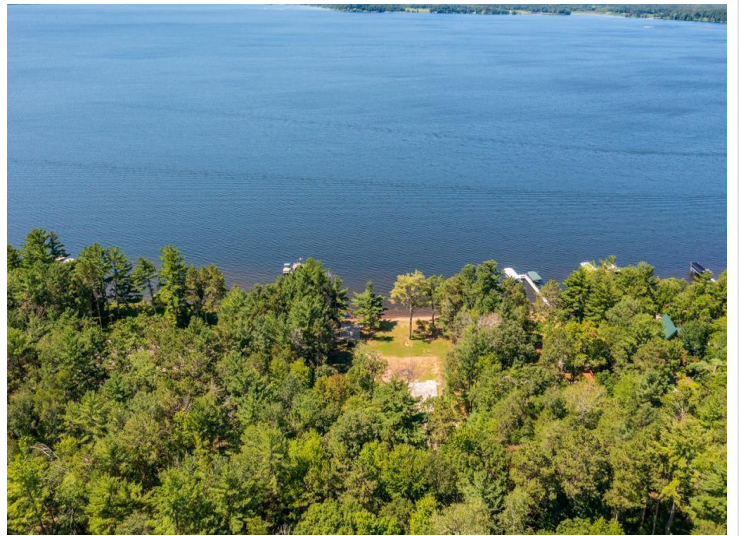
\$1,695,000
MLS 6581443 Lake Land
8559 Sunset Shores
Pine River MN 56474



website: www.AffinityRealEstate.com | email: info@affinityrealestate.com | office: 218-237-3333 | fax:218-237-3377



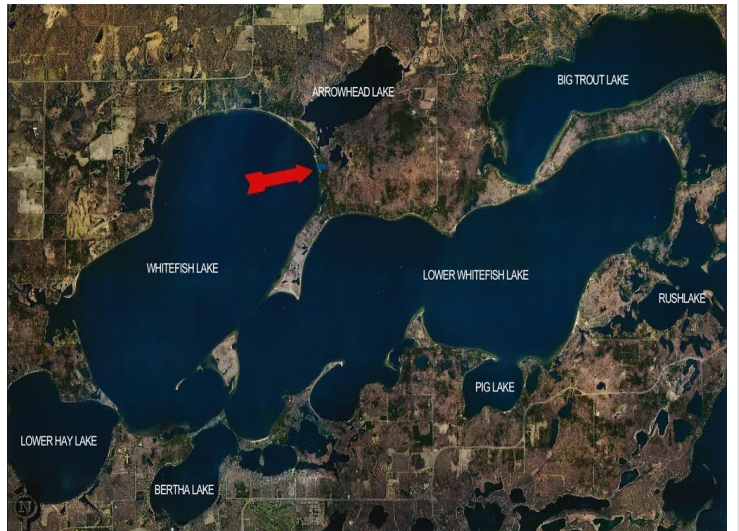
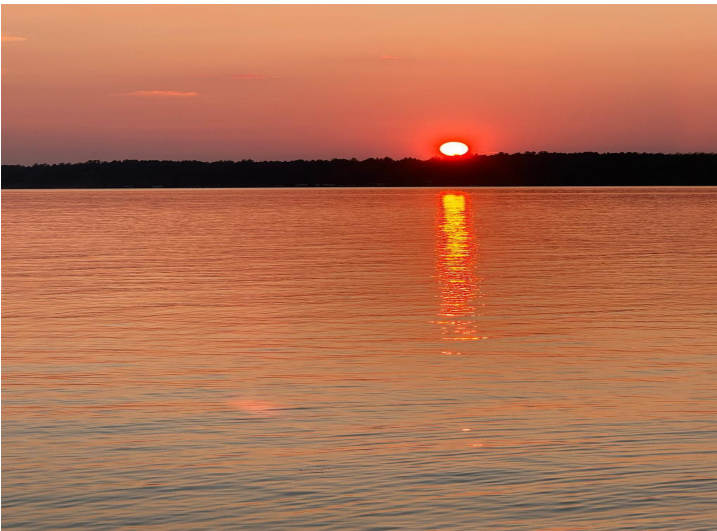
\$1,695,000
MLS 6581443 Lake Land
8559 Sunset Shores
Pine River MN 56474



website: www.AffinityRealEstate.com | email: info@affinityrealestate.com | office: 218-237-3333 | fax:218-237-3377



\$1,695,000
MLS 6581443 Lake Land
8559 Sunset Shores
Pine River MN 56474



website: www.AffinityRealEstate.com | email: info@affinityrealestate.com | office: 218-237-3333 | fax:218-237-3377



\$1,695,000
MLS 6581443 Lake Land
8559 Sunset Shores
Pine River MN 56474