



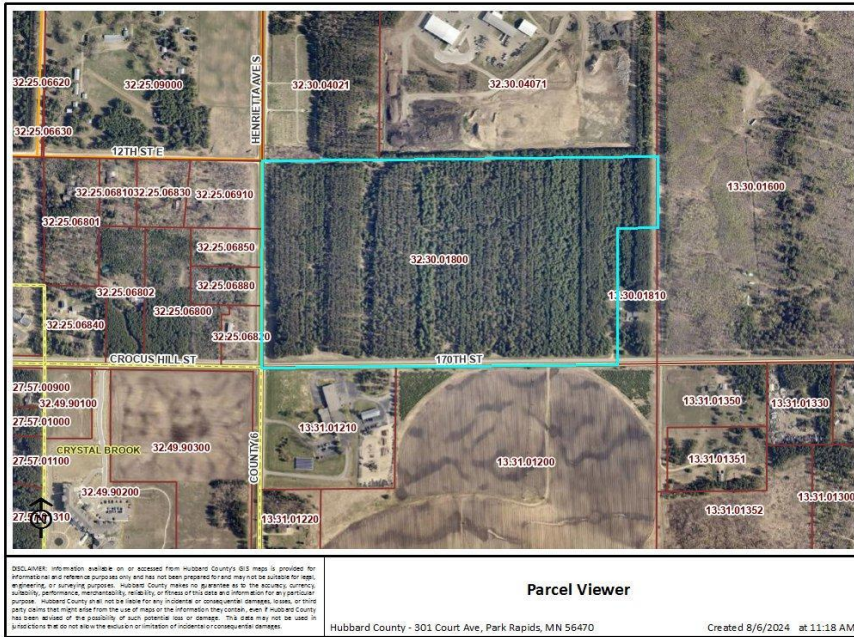
MLS 6581506 Land

**\$499,000**

71.12 Acres  
Raw Land

TBD Henrietta Avenue  
Park Rapids MN 56470

Status: Active



**Description:**

Park Rapids mature and mixed pine plantation of 71+ acres and ideally situated property with blacktop on two sides for easy accessibility. Located centrally on the east side of town with great habitat for deer, grouse and bear. Hard to find, larger lot that is available with this density throughout the full acreage. Gently rolling terrain and a great location - Property sure to impress and waiting for your future vision.

**Additional Details:**

Lot Acres	71.12
Lot Dimensions	1320 x 2230 x 860 x 25 x 450 x 2460
School District	309
Taxes	\$1,928
Taxes with Assessments	\$1,928
Tax Year	2024

**Additional Features:**

**Driving Directions:**

From 34 and Hwy 71 go East on Hwy 34 to the second light, Henrietta Avenue South, turn right to the wooded property on the left.



Listed By:  
Affinity Real Estate Inc.

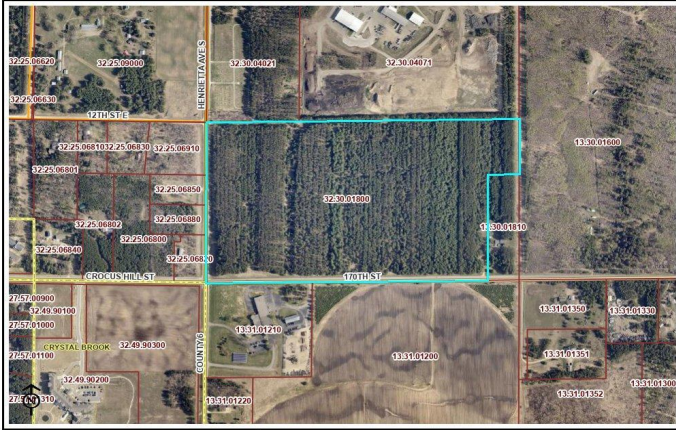
Affinity Real Estate Inc. participates in the Regional Multiple Listing Service of Minnesota, Inc Broker Reciprocity (sm) program, allowing us to display other broker's listings on our website. All properties are subject to prior sale, change or withdrawal.



Call Affinity Real Estate  
**218-237-3333**  
[info@affinityrealestate.com](mailto:info@affinityrealestate.com)



Affinity Real Estate - 600 Park Avenue South - Park Rapids MN 56470



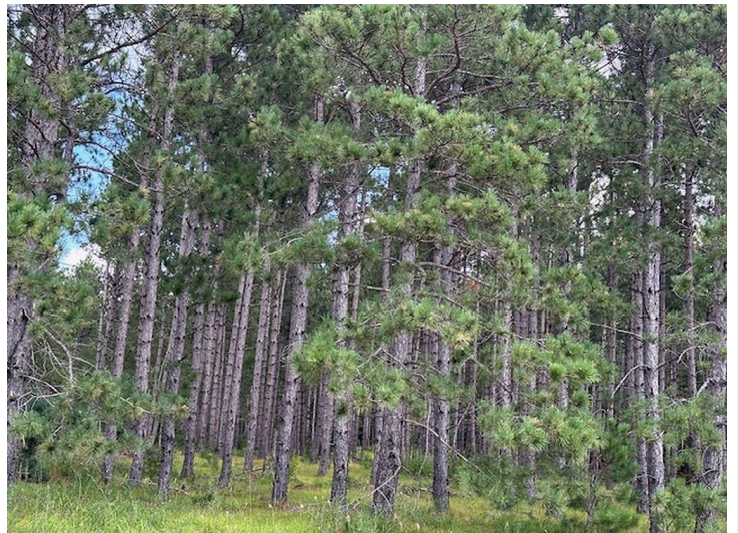
Parcel Viewer  
 Hubbard County - 301 Court Ave, Park Rapids, MN 56470  
 Created 8/6/2024 at 11:18 AM



website: [www.AffinityRealEstate.com](http://www.AffinityRealEstate.com) | email: [info@affinityrealestate.com](mailto:info@affinityrealestate.com) | office: 218-237-3333 | fax: 218-237-3377



**\$499,000**  
 MLS 6581506 Land  
 TBD Henrietta Avenue  
 Park Rapids MN 56470



website: [www.AffinityRealEstate.com](http://www.AffinityRealEstate.com) | email: [info@affinityrealestate.com](mailto:info@affinityrealestate.com) | office: 218-237-3333 | fax:218-237-3377



**\$499,000**  
MLS 6581506 Land  
TBD Henrietta Avenue  
Park Rapids MN 56470