



MLS 6581742 Lake Land

\$195,000

Description:

Welcome to your dream property on the serene banks of the Pine River with quick and easy access to Norway Lake! This exceptional 5.8 acre building site offers a rare opportunity to own a slice of paradise in the heart of nature. Nestled amidst lush greenery and bordered by over 130 (+/-) acres of DNR land, this property ensures unparalleled privacy and boundless outdoor adventures.

Additional Details:

Lot Acres	5.8
Lot Dimensions	700x530x176x825
School District	2174
Taxes	\$154
Taxes with Assessments	\$154
Tax Year	2024

Additional Features:

Driving Directions:

In Pine River go N. of the stoplights on 371 to a right on 24th street (at the fairgrounds) then N. 1.5 miles to sign on right.



Listed By:
Heartland Real Estate

Affinity Real Estate Inc. participates in the Regional Multiple Listing Service of Minnesota, Inc Broker Reciprocity (sm) program, allowing us to display other broker's listings on our website. All properties are subject to prior sale, change or withdrawal.



Call Affinity Real Estate

218-237-3333

info@affinityrealestate.com



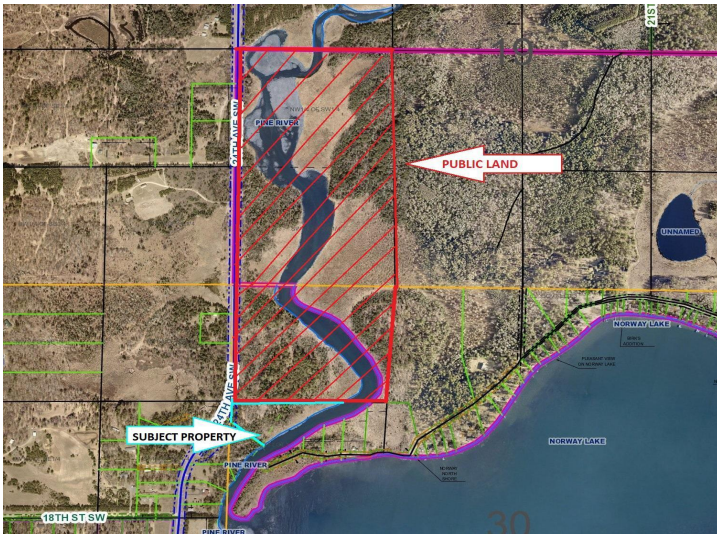
Affinity Real Estate - 600 Park Avenue South - Park Rapids MN 56470



website: www.AffinityRealEstate.com | email: info@affinityrealestate.com | office: 218-237-3333 | fax:218-237-3377



\$195,000
MLS 6581742 Lake Land
1694 24th Avenue
Backus MN 56435



website: www.AffinityRealEstate.com | email: info@affinityrealestate.com | office: 218-237-3333 | fax:218-237-3377



\$195,000
 MLS 6581742 Lake Land
 1694 24th Avenue
 Backus MN 56435